

SOEP Data Access

Strict data protection legislation requires data user contracts with DIW Berlin. For international dissemination, we work with Cornell University, Ithaca/NY.

For more sensitive data (detailed regional and geographical information) that require higher levels of data protection, researchers can use our remote access or dedicated work space in the SOEP department.

Data delivery within the EU (100% of cases)

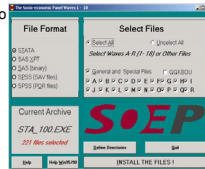


- Data dissemination on DVD only; users are required to sign a "user contract" with DIW Berlin, and receive an access password
- Includes detailed written documentation
- Full German and English labels (variables and values)
- Low nominal data fee (€30/year)
- Annual updates with data from all waves on DVD

Windows Setup Program included

Ready-to-Go

- ⇒ SPSS
- ⇒ Stata
- ⇒ SAS
- ⇒ ASCII



- More sensitive data on the level of regional policy regions is available on a separate CD.
- Users are required to sign a special contract with DIW Berlin and to submit a special plan for data protection for approval by the DIW data protection officer. They receive a separate access password.
- For further information → poster "Regional and Spatial Information in SOEP".



Data delivery outside the EU (a 95% full longitudinal sub-sample)

- Data dissemination on DVD only
- Same full set of documentation and setup program as in 100% sample included
- International Scientific Use Version (95% full longitudinal sub-sample due to data protection regulations)

- Contact and further information:
Coordinator: Cornell University (Richard V. Burkhauser and Dean R. Lillard)
E-mail: CNEF@cornell.edu

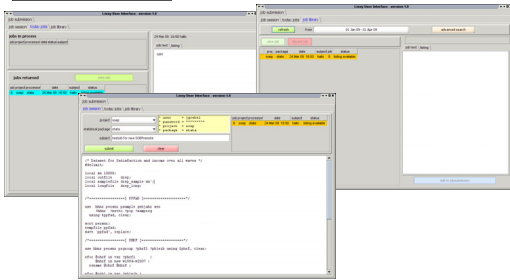
Access to sensitive data

- **SOEPremote** allows processing of sensitive data (geocodes at county level) from outside DIW Berlin
- Mail-based access: User can send Stata syntax to a specific e-mail address at DIW Berlin and a log file will be sent back to the user
- System checks automatically the user written syntax to avoid data protection violation
- If the size of the resulting log files exceeds a specific threshold, the file is not sent back but placed under manual review.

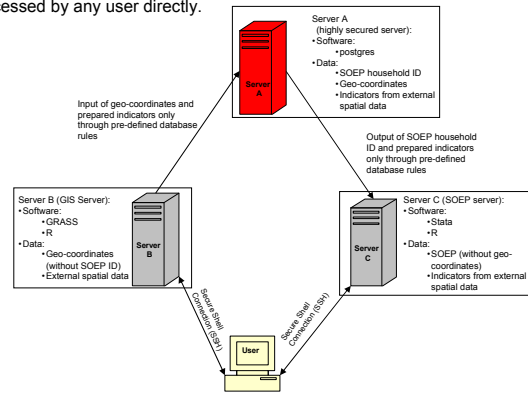
- **SOEPgeo** ... allows processing of highly sensitive geo-coordinates (latitude and longitude) and data on a zip code level available on the premises of DIW Berlin. So: with SOEPgeo, the SOEP department acts as a "Research Data Center" (FDZ).
- ... will improve current situation, as up to now data on a zip code level can be analyzed on a single non-networked computer only (for internal as well as for external users).
- ... combines geo-coordinates and SOEP IDs on one server only which cannot be accessed by any user directly.



New improved version will have a client-server-based user interface for submitting jobs, a job library, and information about running jobs.



Currently a first test installation of the imputed SOEP remote system is running for internal use. An online version for all users is scheduled for Summer 2009.



Currently an initial setup is running as part of a pilot project in cooperation with DLR (→ poster "Synergies in Socioeconomic and Remote Sensing Data"). It is intended that this server-based infrastructure will be available to all guest researchers in fall 2009.

SOEP within cross-country comparative datasets

Cross-National Equivalent File (CNEF)

- Data access requires signing of "user contracts" with original survey providers in a rather informal procedure (except for SLID)
- Nominal fee (\$125)



⇒ Standardization (ex-post harmonization) of various measures (Focus: Income, Demographics, Employment, Health, Life Satisfaction)

- ⇒ USA PSID - Panel Study of Income Dynamics
- ⇒ Germany SOEP - German Socio-Economic Panel Study
- ⇒ Great Britain BHPS - British Household Panel Study
- ⇒ Canada SLID - Survey of Labour and Income Dynamics
- ⇒ Australia HILDA - Household, Income and Labour Dynamics in Australia
- ⇒ Switzerland SHP - Swiss Household Panel

Frick, Joachim R., Jenkins, Stephen P., Lillard, Dean R., Lipps, Oliver and Wooddon, Mark (2007): The Cross-National Equivalent File (CNEF) and its Member Country Household Panel Studies. *Schmollers Jahrbuch - Journal of Applied Social Science Studies*. 127 (4): 627-654.

Luxembourg Income Study (LIS, 32 countries, 1984+)

Luxembourg Wealth Study (LWS, 10 countries, 1984+)

- Cross-national data archive located in Luxembourg. Includes income (or wealth) microdata from a large number of countries at multiple points in time. Registered users may access the microdata for social scientific research using a remote access system.

European Community Household Panel (ECHP, 1994-2001)

- The European Community Household Panel (ECHP) is a survey normally based on a standardized questionnaire (input harmonization). Because the German Federal Statistical Office has stopped producing its own ECHP survey, the SOEP data had been converted into the ECHP format (ex-post harmonization).
- The ECHP dataset is available through one of the Eurostat Datashops.

Under consideration:

Integrative Analysis of Longitudinal Studies on Age (IALSA)

- A data basis for gerontological/life-span research