

2025

SOEP
Annual
Report

2025

SOEP
Annual
Report

The SOEP Team



CONTENTS

Editorial	5	PART 4 SOEP Data and Services	
Letter from the Executive Board of DIW Berlin	7	The Portfolio of SOEP Studies	46
PART 1 The Year in Review		Survey Modes	48
Highlights 2025	10	SOEP-Core Samples (A–S)	49
New Research Grants Prizes and Awards		The IAB-SOEP Migration and	
Staff News Knowledge Transfer Data News		IAB-BAMF-SOEP Refugee Samples	51
The Year in Numbers	16	The SOEP Innovation Sample (SOEP-IS)	51
Top Publications 2025	18	SOEP Users Around the World in 2025	52
SOEP in the Media	21	The SOEP Service Portfolio	54
PART 2 SOEP Structure		New Data Users in 2025	56
SOEP Mission	26	Appendix	
SOEP Structure and Governance	27	SOEP Staff at DIW Berlin	
SOEP Organizational Chart	28	SOEP Directorate	58
SOEP Survey Committee	29	Survey Methodology and Management	58
SOEP Directorate	30	Data Operation and Research Data Center	61
Survey Methodology and Management	31	Applied Panel Data Analyses	63
Data Operation and Research Data Center	31	Knowledge Transfer	65
Applied Panel Data Analyses	31	Research Group “Life Course and Inequality”	66
Knowledge Transfer	32	DIW Research Fellows at SOEP	67
Research Group “Life Course and Inequality”	32	Scientific Output	
PART 3 Research by SOEP Staff		SOEP-Based Web of Science™ Publications:	
Key Research Areas	34	SOEP Staff and User Community	68
Spotlight on IAB-SOEP and IAB-BAMF-SOEP-Based		SOEP Staff	69
Research on Migration	35	SOEP User Community	73
Worldwide Research Collaborations	38	Other Publications	
Third-Party Funding	40	SOEP-Based Articles in DIW Weekly Reports	82
Completed Dissertations	41	DIW aktuell	83
SOEP Alumni	42	SOEPpapers	84
		SOEP Survey Papers	86
		Third-Party Funded Projects	92
		Expert Reports and Appointments	94
		List of Abbreviations and Acronyms	95
		Imprint	98



Sabine Zinn

EDITORIAL

2025 was an exciting and pivotal year for SOEP and its team. We reached a crucial milestone on our path toward securing SOEP as a future-ready, research-based infrastructure: advancing the development of a household panel study designed to analyze short-term dynamics alongside long-term social and economic trends. By moving forward with this initiative, we are laying the groundwork for an enhanced analytical framework that will strengthen SOEP's ability to respond to emerging societal challenges while maintaining its unique capacity to document long-term developments.

The proposal was presented and discussed during two extraordinary evaluations; first, in July, the SOEP was visited by the Leibniz Association, and in September by the German Council of Science and Humanities. Both institutions reviewed our application for a so called "large strategic enhancement." This grant is intended to provide the financial basis for SOEP's further development. Key components of the application include a sample boost, a switch to quarterly data collection and faster data delivery, the inclusion of additional flexible survey content, enrichment with external data, as well as improvements to the data usage infrastructure. The results of the two commissions are expected in 2026.

Furthermore, key personnel decisions were made in 2025. The appointment of myself as Director of the SOEP (and, consequently, to the Executive Board of DIW Berlin) was of particular strategic importance. It marked the end of a challenging multi-year transition phase in which the position was officially vacant.

Two other important positions at SOEP have been filled with relevant experts. First, Dr. Christian Hunkler was appointed Head of the "Survey Methodology and Management" unit. Previously, he was a research assistant at Humboldt-Universität zu Berlin. Secondly, we gained a new Head for the SOEP Innovation Sample, Dr. Levent Neyse. He was previously a researcher at the Berlin Social Science Center (WZB) and on SOEP's Applied Panel Data Analyses team.

This SOEP Annual Report showcases an overview of our wide-ranging activities in 2025. Chapter 1 spotlights key achievements and new projects from the SOEP team as well as a selection of the many media features published using SOEP data. Chapter 2 introduces the SOEP's mission and structure, along with our advisory bodies. Chapter 3 outlines the cornerstones of the SOEP team's research activities, including new research output based on SOEP's migration and refugee samples. Chapter 4 provides insights into fieldwork (conducted by infas Institut für angewandte Sozialwissenschaft GmbH) and our in-house user services. The appendix concludes the report with a complete staff directory and a comprehensive record of scientific output from SOEP researchers and the wider user community.

Thank you for your interest in SOEP – we hope you enjoy exploring 2025's highlights!



Sabine Zinn



From left to right: Denise Rüttiger, Marcel Fratzscher, Sabine Zinn, and Alexander S. Kritikos

LETTER FROM THE EXECUTIVE BOARD OF DIW BERLIN

The last year was a special year for DIW Berlin, as it celebrated its 100th anniversary. The incorporation of the Socio-Economic Panel (SOEP) into the institute in the 1980s was an important milestone for DIW Berlin's development. For over 40 years now, the institute and its researchers have profited from the valuable SOEP data and its expertise. Last year was also of particular importance as Sabine Zinn was appointed Director of the SOEP. We are excited to announce that she is now the Executive Board's fourth member. With her appointment as SOEP's Director, we are again working in full capacity to move DIW Berlin and the SOEP forward. We warmly welcome Sabine Zinn as a full member of the DIW Executive Board and look forward to continuing our excellent work and cooperation together.

For SOEP and its team, 2025 was all about the evaluation for further permanent funding of the panel. The SOEP members did a fantastic job of preparing for two evaluation visits by external evaluators and we are confident that both the particular importance and the uniqueness of SOEP as a research data infrastructure were very well presented. In order to stay relevant as an up-to-date panel, the SOEP is going to transform its survey design, offering greater support for data users in the near future. We hope that these changes can be implemented with the additional funding that the SOEP applied for.

Although the focus of the team in the past months was clearly on the panel's evaluation – as well as on the preparation of the regular Leibniz evaluation of DIW Berlin in 2026 – the SOEP team kept moving forward with its professional day-to-day work. The team processed newly collected data, supported SOEP data users, conducted relevant research, published in prestigious journals and started new research projects – including, among others, the “Many Daughters” study, which uses SOEP data to analyze parents' attitudes when having daughters and uses an innovative approach to encourage researchers to participate in this research endeavor.

Last, but not least, Jürgen Schupp, SOEP's former director, retired in 2025. He has been a SOEP team member since the very start of the panel in 1984. The Executive Board wishes him all the best and, at the same time, is grateful that he will remain part of the DIW Berlin team as a “DIW Honorary Fellow.”

The following pages now present SOEP, its work and research projects, as well as its research output in detail.

We hope that the 2025 annual report provides you with new and interesting insights into SOEP.



Denise Rüttinger



Marcel Fratzscher



Sabine Zinn



Alexander S. Kritikos

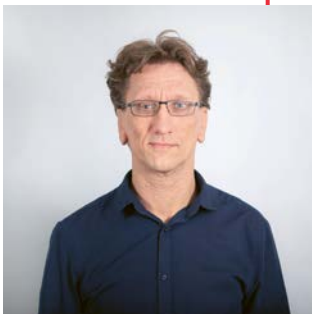
Part 1

THE YEAR IN REVIEW

1

HIGHLIGHTS 2025

NEW RESEARCH GRANTS

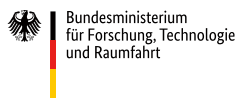


Start of new funding period for NFDI consortium KonsortSWD

The second phase of KonsortSWD started in October 2025, after successful evaluation by the Joint Science Conference. SOEP contributes to the consortium by managing two research projects and coordinating one of its five task areas. By the end of 2028, the federal and state governments will provide a total of around 92 million euros to all consortia to ensure the sustainable provision and further development of research data infrastructures across the entire spectrum of science.

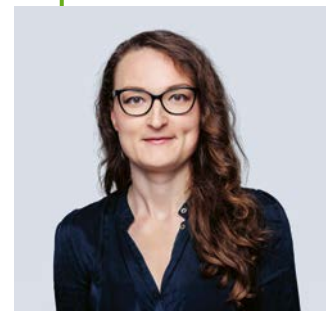


KonsortSWD
NFDI4Society 



Successful prolongation of "BRISE" into third phase

The Federal Ministry of Research, Technology and Space (BMFTR) will fund the existing project BRISE for four more years. At the core of this collaboration with the University of Bremen lies a longitudinal study on the cognitive, social, and emotional development of children growing up in socio-economically disadvantaged families.



SOEP's strategic enhancement: two high-profile evaluations completed

The SOEP team presented its vision to experts from both the Leibniz Association and the German Science and Humanities Council and received positive feedback. The goal is to receive permanent funding within the "Großer Sondertatbestand" scheme. The expansion aims to further develop SOEP's survey infrastructure by combining its established strengths with innovative methodological and technical approaches. SOEP's vision is a more flexible, high-frequency, and highly responsive infrastructure, with survey data collected and made available much more quickly. This will substantially strengthen the relevance of the SOEP for research, policy advice, and society. The funding decision will be made in 2026.





Paper award for Sascha dos Santos

The postdoctoral researcher in the Research Group “Life Course and Inequality” and his co-authors are one of this year’s two winning teams of the NEPS Publication Award. The NEPS (National Education Panel Study) honored them for their contribution to the European Sociological Review entitled “Does training beget training over the life course? Cumulative advantage in work-related non-formal training participation in Germany and the UK.” NEPS is based at LIfBi (Leibniz Institute for Educational Trajectories) and collects longitudinal data on educational processes and skills development in Germany.

LIfBi

LEIBNIZ-INSTITUT FÜR
BILDUNGSVERLÄUFE



PRIZES AND AWARDS

Tagesspiegel: Sabine Zinn one of the 100 most important minds in science

Every year, the Tagesspiegel editorial team selects **100 personalities** who have had a particular impact on the Berlin-Brandenburg science region and shape the science of the future. **Sabine Zinn** is the second SOEP scientist in a row to be selected after **Philipp Lersch** in 2024 and be featured in the Tagesspiegel series.

First prize of the CIDER Public Science Award for Jascha Dräger

At the CIDER-LERN Conference 2025 at LIfBi in Bamberg, SOEP researcher Jascha Dräger was awarded the CIDER Public Science Award, funded by the ZEIT STIFTUNG BUCERIUS. It honors projects that communicate scientific findings to the general public. The foundation praised the outstanding quality of Jascha’s DIW Weekly Report “Language and math skills in Germany depend more on social background at the start of school than in other countries” as well its infographics, audio and video interviews.



GOR Best Thesis Award 2025 for Julia Witton

Julia Witton received the **Best Thesis Award 2025** from the DGOF at the General Online Research Conference (GOR 25) in April for the presentation of her master’s thesis, “Satisficing in a German Self-Administered Probability-Based Panel Survey,” which she wrote at SOEP. Congratulations on this outstanding award!

STAFF NEWS

Sabine Zinn appointed SOEP Director and member of the DIW Executive Board



Social scientist Sabine Zinn was formally appointed SOEP Director by the Board of Trustees of DIW Berlin. Previously serving as Acting Director, Zinn has now officially taken up the leading role for the SOEP Division.



New important appointments

Levent Neyse started his new role as Head of the **SOEP Innovation Sample** in April 2025. He also works on meta-scientific topics such as measurement, replicability, and research transparency and is co-PI of the Lab² Metascience Lab based at WZB. With Christian Hunkler, the **Survey Methodology and Management** unit at SOEP gains a new Acting Head.



Appointment as professor

Adriana Cardozo Silva left SOEP to start her professorship at the Faculty IV Business and Computer Science of Hochschule Hannover – University of Applied Sciences and Arts (HsH). She continues to collaborate with the SOEP.





Appointment as long-term visiting fellow

Levent Neyse was appointed long-term visiting fellow at the London School of Economics and Political Science, Department of Psychological and Behavioural Science.



Deputy Chair of Ethics Board REB: Mariel McKone Leonhard

SOEP Research Associate Mariel McKone Leonhard became deputy chair of the **European Social Survey Research Ethics Board**.

The REB is the body responsible for advising the ESS on ethical issues that arise from conducting a large-scale cross-national survey. Its tasks range from reviewing ethics applications for all ESS activities including survey specifications, to pre-testing questionnaires.



KNOWLEDGE TRANSFER

Report and press conference on living situation of Ukrainian refugees

In March, SOEP and its cooperation partners IAB and BAMF-FZ published a report based on data from the “IAB-BAMF-SOEP Refugee Sample.” They show that while social participation has grown, many hurdles remain. For instance, child-care for young children, school allocation, the recognition of degrees as well as labor market integration is promising, yet there is room for improvement concerning. The publication of the report was accompanied by a press conference and high media attention (see “SOEP in the media” from pp. 21).



Refugees in Germany 10 years after “Wir schaffen das”

What is the state of refugee integration in Germany? 10 years after the strong increase of refugee migration, SOEP researchers published four articles on the subject in *DIW Weekly Report 35/2025*. According to their analyses, refugees experience a significant decline of the so-called “welcome culture” and report fear of xenophobia and discrimination on the housing market.



Leibniz podcast with SOEP team member Jascha Dräger

How severely does absence from school affect students later on? The science podcast “Tonspur Wissen” – a collaboration of Leibniz Association and Rheinische Post – featured Jascha Dräger’s research in its episode “Was Fehlzeiten in der Schule für das ganze Leben bedeuten?” (What does absenteeism at school mean for your whole life?). You can listen to the episode here or read the detailed study in the *DIW Wochenbericht 34/2025* (in German).



YES! Young Economic Solutions

At YES! Young Economic Solutions 2025, Florian Griese mentored a 10th grade class on their way to the national finals. YES! is Germany’s largest school competition on global challenges in business, society, politics, and the environment for grades 10+. They are supported by mentors from science, business, and/or social enterprises. The young people – in this case, from Wiprecht Gymnasium in Groitzsch – learn to develop creative ideas and reflect on their implementation potential.

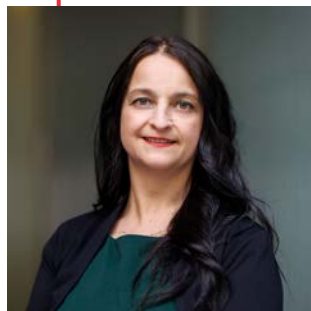


YES! YOUNG ECONOMIC SOLUTIONS

DATA NEWS

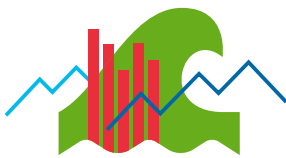
New survey module on artificial intelligence in SOEP-Core 2025

AI is changing our everyday lives – but what do people actually think about it? The new survey instrument, “ATTARI-WHE scale,” records how people in Germany rate AI in the areas of work, health, and education. After successful pretests, the new scale was implemented in the main 2025 SOEP wave and was answered by more than 16,000 respondents.



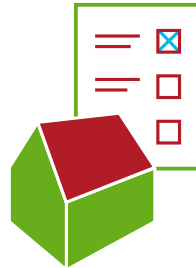
THE YEAR IN NUMBERS

THE SURVEY



42nd

wave of SOEP data
in the field



19,107

SOEP Core

4,931

SOEP IS

successfully
interviewed households

SOEP RESEARCH OUTPUT



48

research projects
at the SOEP



~9.4 million

euros in outside project funding



52

papers by SOEP staff in
Web of Science™
Core Collection Publications



320

papers published worldwide
using SOEP data

WORLDWIDE USERS



18,544

registered SOEP data users
from 60 countries



1,383

new SOEP data users

SOEP TEAM @ DIW BERLIN



15

doctoral
candidates



4

completed
dissertations



83

members of
the SOEP team



45%

female postdocs
on the SOEP team



113

guest
researchers

WEBSITE TRAFFIC



304,886

visits RDC website

191,280

visits DIW/SOEP website

TOP PUBLICATIONS 2025

Publications by SOEP Team Members in A Journals

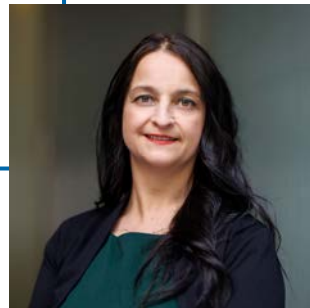


The Review of Economics and Statistics

Bartels, Charlotte, Felix Kersting, and Nikolaus Wolf. 2025. Testing Marx: Capital Accumulation, Income Inequality, and Socialism in Late Nineteenth-Century Germany. *The Review of Economics and Statistics* 107 (4), 935–950. http://doi.org/10.1162/rest_a_01305

Psychological SCIENCE

Fraemke, Deniz, Yayouk E. Willems, Aysu Okbay, Ulman Lindenberger, Sabine Zinn, et al. 2025. Polygenic Associations With Educational Attainment in East Versus West Germany: Differences Emerge After Reunification. *Psychological Science* 36 (7), 559–573. <http://doi.org/10.1177/09567976251350965>



COMPUTERS IN HUMAN BEHAVIOR

Gnambs, Timo, Jan-Philipp Stein, Markus Appel, Florian Griese, and Sabine Zinn. 2025. An economical measure of attitudes towards artificial intelligence in work, healthcare, and education (ATTARI-WHE). *Computers in Human Behavior: Artificial Humans* 3, 100106. <http://doi.org/10.1016/j.chbah.2024.100106>



BMJ Global Health

Gold, Andreas W., Clara Perplies, Louise Biddle, and Kayvan Bozorgmehr. 2025. Primary healthcare models for refugees involving nurses: a systematic review and narrative synthesis. *BMJ Global Health* 10 (3), e018105. <http://doi.org/10.1136/bmjgh-2024-018105>



nature human behaviour

Herpell, Mathis, Moritz Marbach, Niklas Harder, Alexandra Orlova, Dominik Hangartner, et al. 2025. The impact of private hosting on the integration of Ukrainian refugees in Germany. *Nature Human Behaviour* 9, 2249–2260. <http://doi.org/10.1038/s41562-025-02303-5>





International Review of Financial Analysis

König, Johannes and Maximilian

Longmuir. 2025. Wage Risk and Portfolio
Choice: The Role of Correlated Returns.

*International Review of Financial
Analysis 100, 103985.*

<http://doi.org/10.1016/j.irfa.2025.103985>

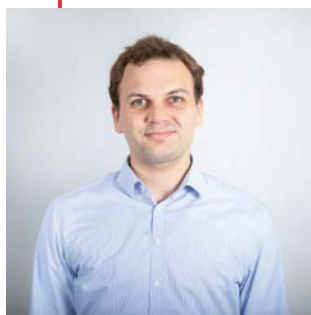
JOURNAL OF ECONOMIC GROWTH

Halbmeier, Christoph and Carsten

Schröder. 2025. The Long-Term
Implications of Destruction During
the Second World War on Private
Wealth in Germany.

*Journal of Economic Growth 30,
161-235.*

<http://doi.org/10.1007/s10887-024-09242-2>



SOEP IN THE MEDIA

Selected Media Coverage 2025

Frankfurter Allgemeine

(for subscribers)

March 9, 2025

Tillmann Neuscheler

Die Lohnlücke steigt mit dem Alter: Größter Gender-Pay-Gap bei Hochschulabsolventen

Die Verdienstunterschiede zwischen Männern und Frauen sind im vergangenen Jahr leicht gesunken. Im Schnitt liegen die Bruttostundenlöhne der Männer in Deutschland noch rund 16 Prozent über denen der Frauen; hinter den Durchschnittswerten verbergen sich aber große Unterschiede nach Alter und Bildungsniveau.

APOTHEKEN Umschau

December 10, 2025

Kai Klindt

Deutschland geht mit seinen pflegenden Angehörigen nicht gut um

Immer noch setzt die Politik bei Pflegebedürftigkeit vor allem auf den Einsatz der Angehörigen. Daran wird wohl auch die angekündigte Pflegereform nichts ändern. Ein Kommentar.

Süddeutsche Zeitung

(for subscribers)

October 15, 2025

Roland Preuß

Zwei von drei Geflüchteten sind armutsgefährdet

Viele Menschen, die nach Deutschland gekommen sind, haben inzwischen eine Arbeit gefunden. Trotzdem lebt ein Großteil unter ärmlichen Bedingungen. Doch es gibt auch positive Nachrichten.

SPIEGEL ONLINE

(for subscribers)

October 3, 2025

Annika Schultz

35 Jahre Wiedervereinigung: „Für manche wurde eben nicht alles besser“

„Wendekinder“ spüren laut einer Studie auch Jahrzehnte nach der Wiedervereinigung die Folgen psychischer Belastung.

hr¹ HESSISCHER RUNDFUNK

(audio)

September 25, 2025

Erben verpflichtet – aber was ist gerecht? (Podcast „Der Tag. Ein Thema, viele Perspektiven“)

Es gibt viel Reichtum in Deutschland. Großen Reichtum! Aber der größte Teil davon liegt in den Händen einzelner Superreicher und die meisten von ihnen haben ihn geerbt oder zu Lebzeiten des Erblassers geschenkt bekommen. Erben – das klingt nach Privatsache. Aber „Eigentum verpflichtet“, steht im Grundgesetz. Und das könnte dementsprechend auch für Erbschaften gelten.

GEO

(for subscribers)

September 22, 2025

*Miriam Eichhorn-Zachariades***Was die Forschung über männliche Einsamkeit weiß**

Männer leiden oft im Stillen unter Einsamkeit, die Zahl ihrer Freundschaften nimmt ab. Gibt es gar eine Epidemie männlicher Isolation, wie oft behauptet? Und was hilft Betroffenen?

Handelsblatt

August 27, 2025

*Dietmar Neuerer***Forscher rechnet mit mehr Einbürgerungsanträgen**

Eine Studie zum Flüchtlingssommer 2015 zeigt: Viele der nach Deutschland Geflohenen wollen langfristig bleiben und Deutsche werden. Heraus sticht dabei vor allem ein Herkunftsland.

SPIEGEL ONLINE

(for subscribers)

July 31, 2025

*Susmita Arp, Katrin Elger, Asia Haidar und Miriam Olbrisch***Zehn Jahre nach Merkel-Diktum: Ziemlich geschafft**

Im Flüchtlingssommer 2015 sagte Kanzlerin Merkel: „Wir schaffen das.“ Heute leben mehr als drei Millionen Geflüchtete in Deutschland. Sie brauchen Arbeit, Wohnungen, Bildung. Was erreicht wurde, was nicht.

DIE ZEIT

March 8, 2025

*Tina Groll***Mindestlohn: Dumpinglöhne gibt's nicht mehr**

Deutschland hatte einst den größten Niedriglohnsektor Europas. Exklusive Daten zeigen: Der Mindestlohn hat diesen Sektor verkleinert – und die Reallöhne steigen lassen.

Frankfurter Allgemeine

(for subscribers)

November 6, 2025

*Anna Sophie Kühn, Stefan Walter***Macht uns die KI gesünder?**

Lange hieß es, die neue Technik im Job mache die Leute einsam und krank. Jetzt deutet eine Studie darauf hin: Die Gesundheit könnte sogar profitieren.

ZEIT ONLINE (video)

February 21, 2025

Superreiche: „Ich nehme ja niemandem etwas weg“

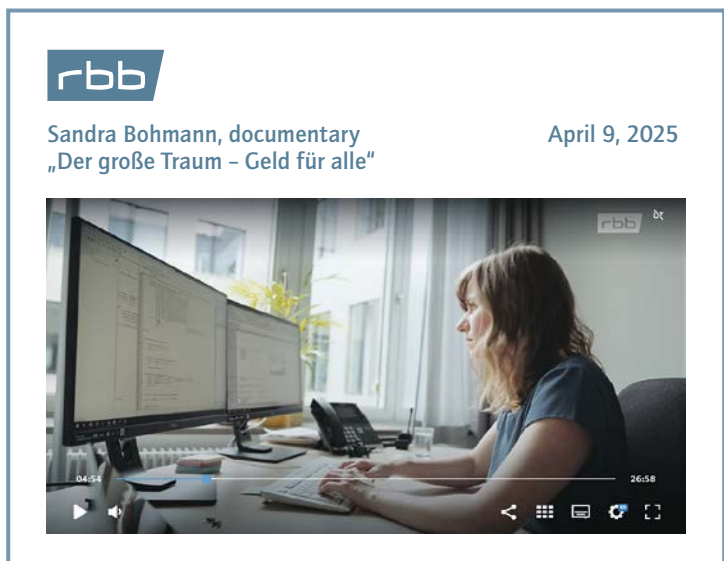
Die Vermögensungleichheit in Deutschland ist enorm. Dabei gäbe es simple Wege, sie zu begrenzen. Was sagt einer, der über 60 Millionen verfügt?

ZEIT ONLINE

October 31, 2025

*Marcel Fratzscher, Philipp Lersch***Die Aufstiegsgesellschaft wohnt zur Miete**

In Deutschland entscheidet nicht das Einkommen darüber, wer ein Haus besitzt – sondern die Eltern. So wird Wohnen zu einer Frage der sozialen Herkunft.



in DIW on LinkedIn, August 29, 2025

DIW Berlin - German Institute for Economic Research
25.925 followers
2h · 🌐

32% der Geflüchteten berichten von Diskriminierungserfahrungen bei der Wohnungssuche. In welchen weiteren Lebensbereichen Diskriminierung wahrgenommen wird und welche Maßnahmen dagegen ergriffen werden könnten, erzählt Ellen Heiding im WB-Podcast: <https://lnkd.in/e6C5KyN8>

Show translation

Der Wochenbericht-Podcast
Diskriminierung von Geflüchteten

"Anonymisierte Bewerbungen und klare Auswahlkriterien können Diskriminierung verhindern und Chancengleichheit erhöhen."

mit **Ellen Heiding**,
Migrationsforscherin

DIW BERLIN

in DIW on LinkedIn, August 27, 2025

10 Jahre nach "Wir schaffen das"

Wie **willkommen** fühlen sich Geflüchtete noch?

Wie steht es um ihre **Einbürgerungsabsichten**?

Wie entwickeln sich **Kleinkinder** Geflüchteter?

in BAMF on LinkedIn, August 2025

Bundesamt für Migration und Flüchtlinge (BAMF)
56.676 Follower:innen
2 Wochen · 🌐

How are the living conditions and the participation of Ukrainian refugees in Germany developing? The joint research report by the Institute for Employment Research (IAB), the Research Centre of the Federal Office for Migration & Refugees (BAMF-FZ), and the Socio-Economic Panel (SOEP) at DIW Berlin provides insights into this.

The data is based on the "IAB-BAMF-SOEP Survey of Refugees" from 2023.

Further information can be found here <https://lnkd.in/eEVdVeN8>

Institut für Arbeitsmarkt- und Berufsforschung
DIW Berlin - German Institute for Economic Research
#BAMFforsch

Übersetzung anzeigen

Part 2

SOEP STRUCTURE

2

SOEP MISSION

SOEP team at DIW Berlin:
 first row from left to right:
 Division Survey Methodology
 and Management, Data
 Operation and Research
 Data Center (RDC);
 second row from left to
 right: Division Knowledge
 Transfer/SOEP Directorate/
 Research Group "Life Course
 and Inequality", Division
 Applied Panel Data Analyses



The German Socio-Economic Panel (SOEP) is an independent, non-partisan, research-driven infrastructure unit that serves the international scientific community by providing nationally representative longitudinal data (the SOEP study) and related datasets (SOEP-Related Studies) on private households in Germany.

The SOEP team is recognized internationally for its high-level scientific research on survey methodological and theoretical as well as applied and policy-oriented topics. The SOEP works to communicate research findings to the broader public in an easily understandable way, thus contributing to knowledge transfer from research to society.

The SOEP study is designed from a multi-disciplinary perspective to provide data for basic, applied, and policy-relevant research that will improve our understanding of human behavior, economic decisions, mechanisms of social change, and the impacts of political decisions. It takes the household context, the neighborhood, and differ-

ent institutional settings and policy regimes into account, while also making use of data from external sources. Boost samples are added regularly to keep pace with societal change. SOEP datasets are linked to data from other sources in line with data protection regulations to expand the potential for scientific analysis. The SOEP's partnerships with studies worldwide promote the use of SOEP data in international comparative research.

Research questions and survey contents are solely determined by scientific criteria.

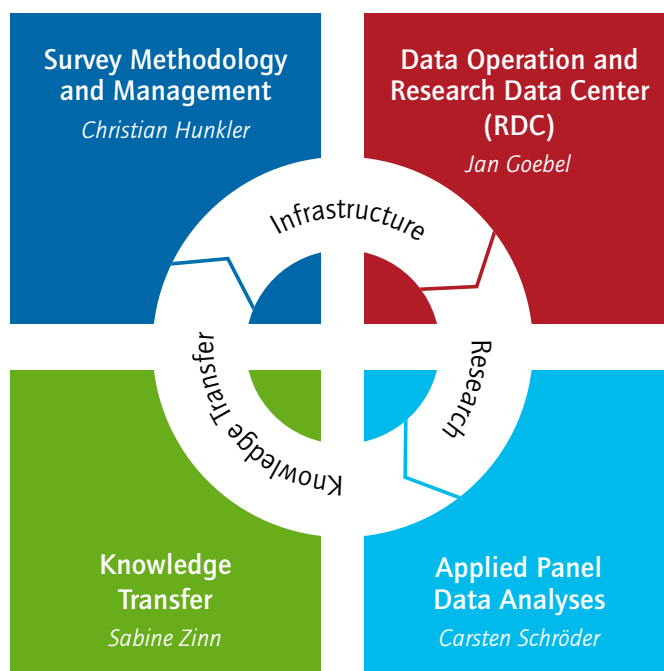
The complete [mission statement](#) can be found on our website.

The SOEP is one of Germany's most important research data infrastructures in the social, behavioral, and economic sciences and is proud to be part of the National Research Data Infrastructure (NFDI). As part of the Leibniz Association, the SOEP receives funding from the Federal Ministry of Research, Technology and Space (BMFTR) and Germany's state governments.

SOEP STRUCTURE AND GOVERNANCE

The independent, research-driven, SOEP infrastructure comprises four divisions, each carrying out a wide range of tasks to ensure the high quality of its infrastructure, research, and transfer. Besides conceptualizing studies and samples (**Survey Methodology and Management**), SOEP staff prepare data for user-friendly analysis and distribute them to researchers (**Data Operation and Research Data Center**). **Applied Panel Data Analyses** analyzes the data while **Knowledge Transfer** provides training for SOEP data users and disseminates SOEP-based research findings throughout society – to both survey respondents and the general public.

The SOEP infrastructure is managed by the SOEP Director, who is also a member of the DIW Executive Board. Each of the four divisions is managed by a head. The SOEP Survey Committee, which comprises up to ten highly recognized researchers appointed by the DIW Board of Trustees, serves as a scientific advisory board to the SOEP.



SOEP ORGANIZATIONAL CHART



⋮ Based at the SOEP but not part of its organizational structure

SOEP SURVEY COMMITTEE

The **SOEP Survey Committee** is appointed by the DIW Berlin Board of Trustees. The members shown represent the appointment period for 2025. They provide advice on the further development of the SOEP survey and SOEP user services and

meet at least once a year with the SOEP team. We are very grateful to this impressive group of researchers for their commitment to work with us in building and enhancing the SOEP.

Members of the SOEP Survey Committee



Prof. Dr. Jutta Mata (Chair)
Chair of Health Psychology at
University of Mannheim



**Prof. Conchita D'Ambrosio,
Ph.D.**
Professor of Economics at
University of Luxembourg



PD Dr. habil. Christina Boll
Head of the "Family and
Family Policy" Department at
German Youth Institute (DJI)



Prof. Dr. Frank Kalter
Professor of General Sociology
at *University of Mannheim*



PD Dr. Oliver Lipps
Head of the FORS *Methodological
Research Unit* and Private Docent
at the *Institute of Sociology,
University of Berne*



Prof. Dr. Căzilia Loibl, CFP
Professor and Chair of Consumer
Sciences at *Ohio State University,
Columbus*



Annette Scherpenzeel, Ph.D.
Senior Researcher at *Netherlands Institute for Health Service Research, Utrecht*



Dr. Tobias Schmidt
Senior Researcher in the *Research Centre of Deutsche Bundesbank, Frankfurt am Main*



Prof. Dr. Joachim Winter
Chair of Empirical Economic Research at *LMU Munich*



Prof. Dr. Philippe Van Kerm
Professor of Social Inequality and Social Policy at *University of Luxembourg* on a joint appointment with *Luxembourg Institute of Socio-Economic Research (LISER)*



Prof. Dr. Sabine Zinn
SOEP Director

SOEP DIRECTORATE

The SOEP director and their administration team are responsible for around 80 staff members, as well as trainees, doctoral researchers, grant holders, and about 30 student assistants. The director's team provides a wide range of research and administrative support services as well as research and project management to the entire SOEP team.

Administrative support activities include liaising with the SOEP Survey Committee as well as coordinating and facilitating administrative processes between the SOEP unit and DIW Berlin's financial and human resources units.

The SOEP infrastructure is managed by the Director (who is also a member of the DIW Executive Board) with the help of four divisions. The Research Group "Life Course and Inequality" is assigned to the director to deepen the research portfolio of the SOEP in the field of inequality research. The director sets the direction for the diverse activities of the SOEP, ranging from independent research to infrastructure provision and defining strategic goals for the future development of the SOEP.

SURVEY METHODOLOGY AND MANAGEMENT

The Survey Methodology and Management division team is responsible for all aspects of data collection, ranging from sampling and survey design as well as questionnaire development to research on selectiveness in the data. Experts from the team work closely with the other SOEP divisions, the SOEP Survey Committee, and with the institute that conducts the fieldwork for the SOEP survey.

The team is also responsible for the IAB-BAMF-SOEP Survey of Refugees and the IAB-SOEP Migration Sample and the Innovation Sample. The latter provides a framework for testing new and innovative concepts, questions, and survey instruments for potential inclusion in the main SOEP-Core study. Further areas of the team's work are non-response analyses, weighting, and data documentation.



Dr. Christian Hunkler
Division Head

DATA OPERATION AND RESEARCH DATA CENTER

Experts from the Research Data Center of the SOEP (RDC) prepare the survey data for both longitudinal and cross-sectional scientific analysis. They generate numerous user-friendly variables and impute missing data. They also provide access to small-scale regional codes through a variety of secure data channels. The team provides SOEP data to researchers worldwide in the form of scientific use files, based on a data use contract. Researchers can analyze datasets that are subject to stricter data protection regulations either through remote data access or at a secure guest workstation at the SOEP. Comprehensive documentation on all SOEP data is published online either as downloadable PDF files or on paneldata.org, the open-source documentation system developed by the SOEP staff. An overview of the SOEP-Core data can be found in the [SOEPcompanion](#).



Dr. Jan Goebel
Division Head

APPLIED PANEL DATA ANALYSES

The Applied Panel Data Analyses division is made up of senior researchers as well as doctoral candidates from a variety of graduate programs. Key research areas of the team include distributional analyses, labor economics, education and health, (subjective) well-being, as well as integration and migration. The team's research is based primarily on SOEP data but also on other international datasets such as the Cross-National Equivalent File (CNEF), to which the team contributes.

The ongoing research with these datasets ensures that the quality of the data is monitored regularly, systematically, and meticulously – from the questionnaire modules to the survey data. The team works closely with colleagues from across DIW.



Prof. Dr. Carsten Schröder
Division Head



Prof. Dr. Sabine Zinn
Division Head

KNOWLEDGE TRANSFER

The Knowledge Transfer division provides a wide variety of services to three main target groups: survey respondents, the general public, and (potential) data users. Communication with survey respondents is managed through the study website, information materials, and interviewer briefings.

Research results are disseminated to the general public (including politics, media, and civil society) through publications in international journals and (policy) reports. Examples include the DIW Berlin Weekly Report and the “Social Report.” SOEP analyses also flow into various official government reports. Other channels include DIW social media, high-profile public events, the annual report, and press conferences.

Within academia, (potential) data users are the most important target group. [SOEPcampus workshops](#) and [SOEPtutorials](#) offer young researchers an introduction to the SOEP data. A wide range of information and documentation materials are made available, including online resources, to assist researchers in their work with SOEP data (e.g., SOEP Survey Papers, [paneldata.org](#), SOEP website).



Prof. Dr. Philipp Lersch
Research Group Leader

RESEARCH GROUP “LIFE COURSE AND INEQUALITY”

The “Life Course and Inequality” research group investigates how social inequalities develop across and between the life courses of individuals within diverse and changing societal contexts. Working at the intersection of sociology, demography, and economics, the group primarily focuses on economic wealth and labor market inequalities. The group predominantly utilizes international longitudinal data from household surveys and public registers, analyzing these data with a theory-driven approach and employing modern quantitative methods. The project [WEALTHTRAJECT](#), funded by the European Research Council, focuses on the diverse trajectories of wealth accumulation, emphasizing the variability in wealth patterns over individuals’ lives. DECIPHE, funded by the Volkswagen Foundation, examines how demographic changes impact the intergenerational persistence of homeownership in Europe with partners in Hungary, Spain, and the UK.

Part 3

RESEARCH BY SOEP STAFF

3

KEY RESEARCH AREAS

In this chapter, we present the cornerstones of research carried out by SOEP researchers on site in Berlin as well as relevant developments. For the list of publications by SOEP staff, please see the appendix.

The researchers working at SOEP engage in conceptually advanced and methodologically sophisticated scientific research in economics, sociology,

psychology, other fields in the social sciences, and survey methodology. Their research focuses on important topics and issues in modern societies, all founded on an empirical and analytical understanding of scientific research.

The SOEP primarily works on the following four research topic areas and exemplary questions.

1 SOCIAL INEQUALITIES AND DISTRIBUTION

This research area deals with the question of how equally or unequally societal resources such as income and wealth are distributed, as well as how differences in access to education and the labor market create risks and opportunities.

2 SUBJECTIVE WELL-BEING, PERSONALITY, AND HEALTH

Researchers examine how living conditions affect health and well-being as well as what role personality plays across the life course.

3 MIGRATION AND INTEGRATION

This research area investigates the migration history, living situation, and integration of migrants (Migration and Social Transformation).

4 SURVEY METHODOLOGY AND DATA SCIENCE

Experts in survey methodology and data science are working to develop and further improve the SOEP study.

SPOTLIGHT ON IAB-SOEP AND IAB-BAMF-SOEP-BASED RESEARCH ON MIGRATION

2025 marked the 10th anniversary of the large refugee cohort of 2015. Research on migration and integration have been an important part of SOEP's agenda from the start. New subsamples on migration have been launched since the 2010s thanks to a fruitful, ongoing cooperation with the Institute for Employment Research (IAB) and the Research Center of the Federal Office for Migration and Refugees (BAMF-FZ). With the IAB-SOEP Migration Sample and the IAB-BAMF-SOEP Survey of Refugees, two integrated studies provide unique insights into the life course trajectories of both voluntary and forced migrants. A selection of 2025 research results can be found below.



2015 refugees: Labor market integration at high level

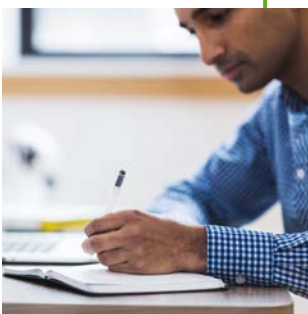
10 years after the massive influx of refugees to Germany, the IAB published a report analyzing their current labor market participation. The result: 64 percent of those who arrived 10 years ago are now employed (compared to 70 percent of the general population). However, their salaries are lower and gender differences prevail: While the employment rate among men is 76 percent, only 35 percent of women currently have a job. The reasons are manifold: Besides a higher child-care burden and lower levels of education and training, hindering factors are poorer health outcomes and later participation in integration courses.

Apart from gender differences, the region of residence matters. By combining different statistics, the authors show that both employment rates and salaries are higher in the four southern Länder: Bavaria, Baden-Württemberg, Saarland, and Rhineland-Palatinate.

Brücker, H., Jaschke, P. & Kosyakova, Y.

2025: 10 Jahre Fluchtmigration 2015: Haben wir es geschafft? Eine Analyse aus Sicht des Arbeitsmarktes. *IAB-Kurzbericht 17/2025 (available in German).*

<http://doi.org/10.48720/IAB.KB.2517>



Institutional trust among refugees declines after arrival

A group of researchers including Yuliya Kosyakova (IAB) investigated how refugees' personal experiences shape their trust in institutions. Generally, refugees in Germany have higher trust in institutions than German natives and non-refugee immigrants. However, their trust levels decline the longer they stay in Germany.

Which are the factors that decrease institutional trust among refugees? According to the authors, traumatic experiences before migration – especially during flight – significantly reduce trust levels. Other factors are sharing accommodation with other refugees, residency restrictions, and the length of asylum processes.

Kanas, A., van Tubergen, F., & Kosyakova, Y.

2025. Determinants of refugees' generalised and institutional trust: evidence from Germany. *Journal of Ethnic and Migration Studies*, 9451, 1–20.

<https://doi.org/10.1080/1369183X.2025.2514800>



“Integration courses”: New data linkage yields insights on participants

Integration courses are one of the main pillars of institutionalized integration of migrants and refugees in Germany. A BAMF report now sheds light not just on the use of the different course types but also on test results and waiting times.

It builds on a novel data linkage of the IAB-BAMF-SOEP sample with BAMF administrative data (Integrationsgeschäftsdatei, InGe), thus allowing access to much more detailed information on course participation. As expected, course choice depends highly on the individual's educational level: the higher it is, the more likely will refugees attend the general integration course and not an “alphabetization course,” designed for those lacking knowledge of the Latin script. The older a person, the more likely it is that he or she will take part in one of these literacy courses. Moreover, age and educational level also have a negative effect on participants' scores in the German test (DTZ – Deutschtest für Zuwanderer).

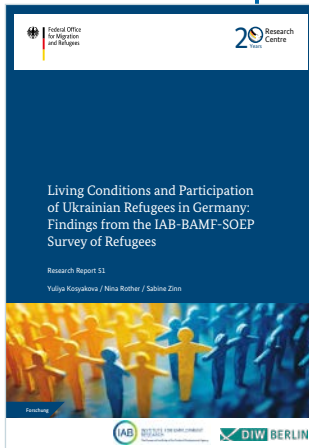
The author shows that waiting times have generally decreased over the past few years. He can find no evidence of structural discrimination against certain socio-economic groups. However, refugee women with children tend to have longer waiting times, since they are dependent on suitable childcare options before beginning the course.

Eckhard, J.

2025. Geflüchtete im Integrationskurs – Einblicke auf Grundlage einer Verknüpfung der IAB-BAMF-SOEP-Befragung von Geflüchteten mit der Integrationsgeschäftsdatei des BAMF (Kurzanalyse 05/2025).

Nürnberg. Bundesamt für Migration und Flüchtlinge.

<https://doi.org/10.48570/bamf.fz.ka.05/2025.d.2025.intkurs.1.0>



Joint report on the living situations of Ukrainian refugees (IAB, BAMF, and SOEP)

Kosyakova, Y., Rother, N. & Zinn, S. (eds.).

2025. Living Conditions and Participation of Ukrainian Refugees in Germany: Findings from the IAB-BAMF-SOEP Survey of Refugees (Research Report 51). Nuremberg. Federal Office for Migration and Refugees.

<https://doi.org/10.48570/bamf.fz.fb.51.en.2025.ukrgef1.1.0>

Asylum seekers and mental health

Following the two major waves of refugee migration to Germany (1991–1993 and 2015–2016), social debates have intensified, and critical attitudes toward migration have become the focus of greater attention in the media and among the broad public. What are the psychological consequences of this public presence of the issue? Can negative attitudes toward asylum seekers act as stressors and affect the mental health of the population? To measure the direct psychological consequences, researchers examined people's mental health in relation to their geographical proximity to asylum seekers in their place of residence.

The result: So far, there is no evidence that the mental health of the population is affected by proximity to asylum seekers. The increase in refugee migration therefore does not lead to any deterioration in mental health in the host country.

Bharadwaj, P., Graeber, D., Khoury, S., & Schmidt C.P.R.

2026. Asylum seekers and host country mental health: Evidence from Germany and Switzerland. *Journal of Development Economics*, 178, 103579.

<https://doi.org/10.1016/j.jdeveco.2025.103579>



WORLDWIDE RESEARCH COLLABORATIONS

The image displays a collection of logos for various research institutions and universities, arranged in a grid-like pattern. The central logo is SOEP (Leibniz-Institut für Sozialwissenschaftliche Erhebungsprojekte). Other logos include:

- DIE**: Deutsches Institut für Erwachsenenbildung, Leibniz-Zentrum für Lebenslanges Lernen
- DIPF**: Leibniz Institute for Research and Information in Education
- fli**: Leibniz-Institut für Altersforschung - Fritz-Lipmann-Institut e.V.
- UNIVERSITÄT BIELEFELD**
- GESIS**: Leibniz-Institut für Sozialwissenschaften
- IADO**: LEIBNIZ-INSTITUT FÜR ARBEITSFORSCHUNG AN DER TU DORTMUND
- ifo**
- Bundesamt für Migration und Flüchtlinge**
- ifw**: KIEL INSTITUT FÜR WELTWIRTSCHAFT
- IPN**: Leibniz-Institut für die Pädagogik der Naturwissenschaften und Mathematik
- IWH**: Leibniz-Institut für Wirtschaftsforschung Halle
- Deutsche Rentenversicherung**
- LfBi**: LEIBNIZ-INSTITUT FÜR BILDUNGSVERLÄUFE
- SOEP**: Leibniz-Institut für Sozialwissenschaftliche Erhebungsprojekte
- LIV**: Leibniz-Institut für Virologie
- FAU**: FRIEDRICH-ALEXANDER UNIVERSITÄT ERLANGEN-NÜRNBERG
- Leibniz lab**: Pandemic Preparedness
- LSB**
- Leibniz-Institut für ökologische Raumentwicklung**
- LIR**: Leibniz-Institut für Resilienzforschung MAINZ
- RWI**: Leibniz Institute for Economic Research
- Leibniz ScienceCampus SOEP RegioHub at Bielefeld University**
- LMU**: LUDWIG-MAXIMILIANS-UNIVERSITÄT MÜNCHEN
- WZB**: Wissenschaftszentrum Berlin für Sozialforschung
- ZBW**: Leibniz-Informationszentrum Wirtschaft, Leibniz Information Centre for Economics
- ZEW**: Zentrum für Europäische Wirtschaftsforschung GmbH
- nfdi**
- DIISTATIS**: Statistisches Bundesamt

COLLABORATIONS WITH LEIBNIZ INSTITUTIONS

The SOEP has a large number of longstanding and formal, often contractually secured collaborations with Leibniz institutions, universities, and non-university research institutions. Through these national and international collaborations, SOEP is able to form an excellent research network that pools expertise and fosters interdisciplinary synergies.



NATIONAL COLLABORATIONS

INTERNATIONAL COLLABORATIONS

THIRD-PARTY FUNDING

SOEP researchers are actively involved in almost 50 third-party funded research projects, most of these include cooperations with universities and/or other research institutes. They are financed with about 9.4 million euros in funding by the German Research Foundation, various federal

ministries, or the Leibniz Association. There is a list of selected projects broken down by research focus further on in the appendix from page 94 or on our website ([Research Projects](#)). The main funding partnerships of SOEP include:



COMPLETED DISSERTATIONS



Cristóbal Moya

**"The Politics of Unjust Inequalities:
From Injustice Perceptions to Protest and Redistribution"**

Bielefeld University, December 11, 2025
Supervisors: Stefan Liebig, Carsten Sauer
Structured PhD program: Bielefeld (BGHS)



Neil Murray

**"The Dynamics of Risk Preferences:
Empirical Perspectives on Adaption and Behavior"**

Freie Universität Berlin, December 10, 2025
Supervisors: Carsten Schröder, Jan Marcus



Barbara Stacherl

**"Spatial Healthcare Access:
Measurement, Health-Related Outcomes,
and Healthcare Utilization"**

Bielefeld University, September 9, 2025
Supervisors: Odile Sauzet, Anna-Theresa Renner
Structured PhD program: Public Health

NATIONAL/ INTERNATIONAL: Politics and public institutions

BUNDESKANZLERAMT

Anika Rasner (Adviser)



BUNDESMINISTERIUM FÜR WIRTSCHAFT UND ENERGIE

Holger Lüthen (Adviser)



BUNDESMINISTERIUM FÜR ARBEIT UND SOZIALES

Eva M. Berger (Adviser)

Adrian Hille (Adviser)



BUNDESMINISTERIUM DER FINANZEN

Johannes König (Adviser)



BUNDESMINISTERIUM FÜR WOHNEN, STADTENWICKLUNG UND BAUWESEN

Felicitas Schikora (Desk Officer)



UMWELTBUNDESAMT

Nina Vogel

(Research Associate)



Consumer Financial Protection Bureau (CFPB), Washington, D.C., USA

Cornie Shupe (Economist)



THÜNEN-INSTITUT

Gundi Knies

(Research Associate)



STADT LEIPZIG

Christian Schmitt (Director of the
Office of Statistics and Elections)



STADT DRESDEN

Elisabeth Liebau

(Head of the Monitoring Module,
Municipal Statistics Office at the
Citizens' Service Center)



INTERNATIONAL: academic positions



AUSTRALIA



John de New, Sarah Dahmann
University of Melbourne



Maximilian Longmuir
University of New South Wales



FRANCE



Ingrid Tucci
Université Aix-Marseilles

Dauphine | PSL
UNIVERSITÉ PARIS

Peter Eibich
Paris-Dauphine-PSL



LUXEMBOURG



Conchita d'Ambrosio
Université du Luxembourg



SWITZERLAND



**Universität
Zürich**^{UZH}

Marco Giesselmann, Bettina
Isengard, Michael Krämer
Universität Zürich



UNITED KINGDOM



Christian Krekel
*London School of Economics
and Political Science*

Part 4

SOEP DATA AND SERVICES

4

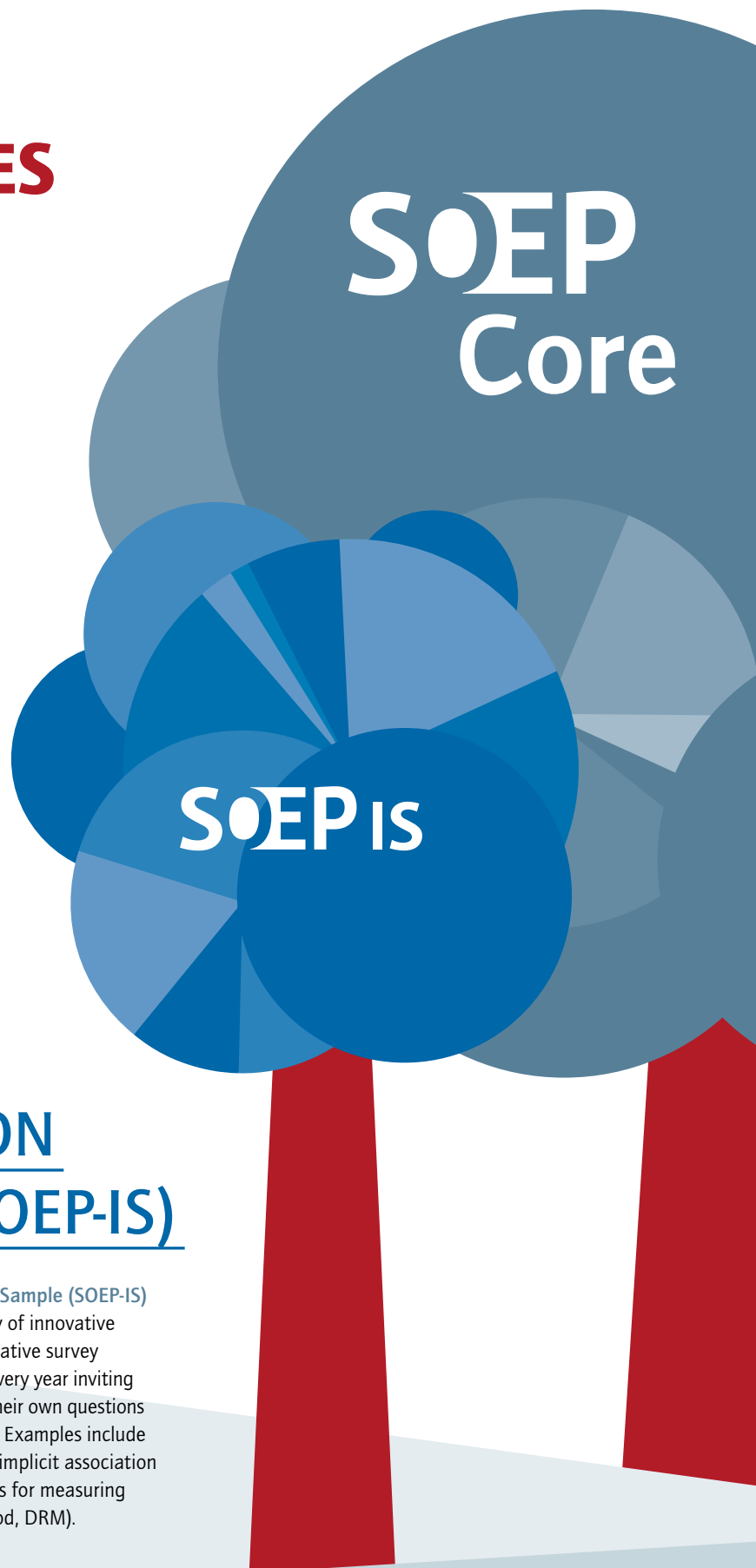
THE PORTFOLIO OF SOEP STUDIES

SOEP-CORE

The term **SOEP-Core** refers to the main Socio-Economic Panel, a wide-ranging representative longitudinal study of private households in Germany launched in 1984 as part of a collaborative research center of the German Research Foundation. Since the SOEP began, it has repeatedly added new subsamples, such as those with a special focus on migrants, refugees, families, and the wealthy. SOEP now surveys around 20,000 households and 30,000 individuals every year. Some of the many topics of SOEP-Core include household composition, education, occupational biographies, employment, earnings, health, and life satisfaction.

SOEP INNOVATION SAMPLE (SOEP-IS)

The longitudinal **SOEP Innovation Sample (SOEP-IS)** was launched in 2011 for the study of innovative research questions as well as innovative survey methods. SOEP-IS publishes a call every year inviting researchers worldwide to propose their own questions or modules for inclusion in SOEP-IS. Examples include economic behavioral experiments, implicit association tests (IAT), and complex procedures for measuring time use (day reconstruction method, DRM).



SOEP-CROSS COUNTRIES (SOEP-XC)

The SOEP team also links and harmonizes SOEP data with data from other countries. This enables the use of the SOEP data in **cross-national comparative analysis**:

First, the **Cross-National Equivalent File (CNEF)** provides harmonized information on education, employment, income, health, and life satisfaction from nine different international household panel studies. In addition to the German SOEP data, these include data from Australia, Canada, Japan, Russia, South Korea, Switzerland, the United States, and the United Kingdom.

Second, the **Luxembourg Income Study (LIS)** is a database of harmonized microdata from over 50 countries including income, employment, and demographic data.

Third, the **Luxembourg Wealth Study (LWS)** database contains comparable wealth data for 25 countries.

SOEP-RELATED STUDIES (SOEP-RS)

SOEP-Related Studies (SOEP-RS) are designed and implemented in close cooperation with the SOEP team and structured similarly to the SOEP. They typically incorporate questions from the SOEP questionnaire to validate their results. Some examples of SOEP-RS include BASE-II (Berlin Aging Study II), FID (Families in Germany), SOEP-ECEC Quality (Early Childhood Education and Care Quality in the SOEP), SOEP-LEE 1&2 (SOEP Linked Employer-Employee Survey), BIP (Bonn Intervention Panel), BRISE (Bremen Initiative to Foster Early Childhood Development), SCP (Cohesion Panel of the Research Institute for Social Cohesion), and the IAB-BiB/FReDA-BAMF-SOEP Survey of Refugees from Ukraine.



SOEP XC



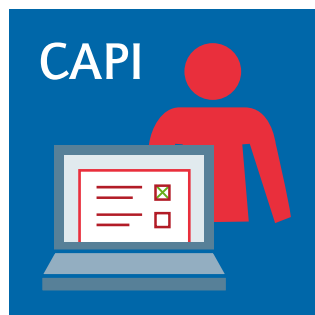
SOEP RS

SURVEY MODES

All surveys are carried out by infas Institute for Applied Social Science GmbH. For the 2025 SOEP-Core study and the IAB-SOEP Migration Sample, we selected a push-to-web approach that had already been tested and scientifically evaluated in the British Understanding Society Panel. A random 50 percent of all survey households were invited to a computer-assisted web interview (CAWI), while the remaining 50 percent received an invitation to the usual personal interview interview (CAPI). Those who did not respond to the CAWI invitation after eight weeks were offered the CAPI option.

With this change, the SOEP took a step toward faster data collection and distribution. The experience acquired in 2025 will inform the adaptive mode design for the following years, with the goal of ensuring high response rates and maintaining excellent data quality. This entails analyzing for which households the CAWI mode works well and for which CAWI is more suitable.

Sebastian Link, Michael Ruland, Thomas Weiß



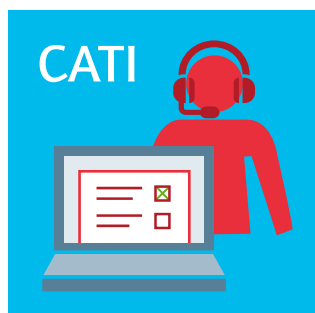
Computer-Assisted
Personal Interview



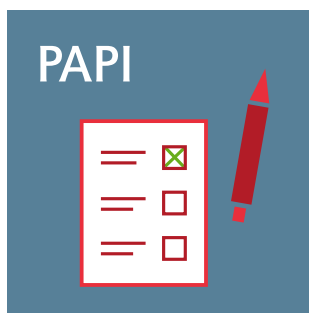
Computer-Assisted
Self-Administered
Interview



Computer-Assisted
Web Interview



Computer-Assisted
Telephone Interview

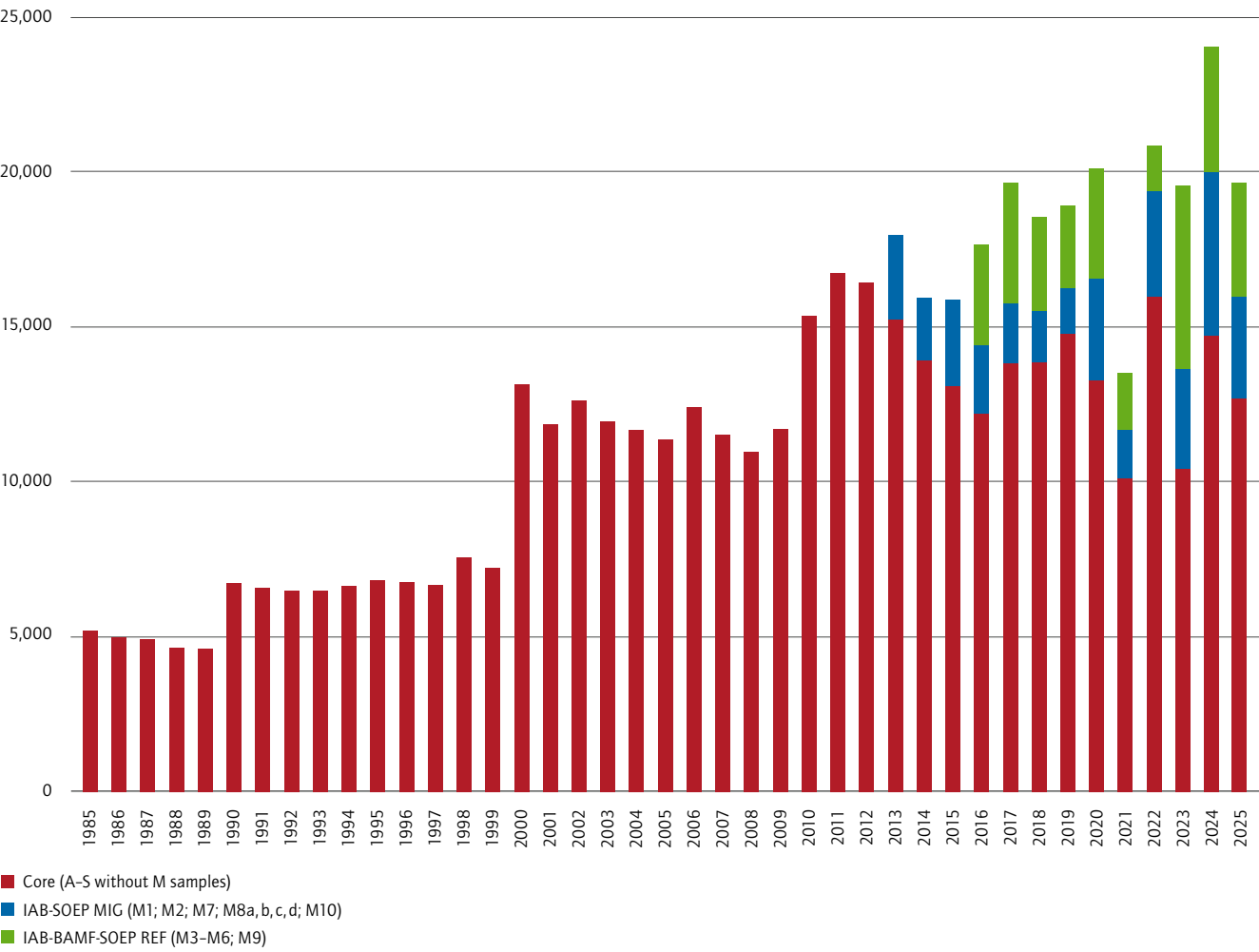


Paper-and-Pencil
Interview

SOEP-CORE SAMPLES (A-S)

The sample was surveyed between the beginning of March and mid-October 2025. No refresher samples were added this year. Ultimately, 70.1 percent of the gross sample completed the questionnaire.

Figure 1
Sample sizes, validly realized (households aggregated)



Most successful field start since 1984

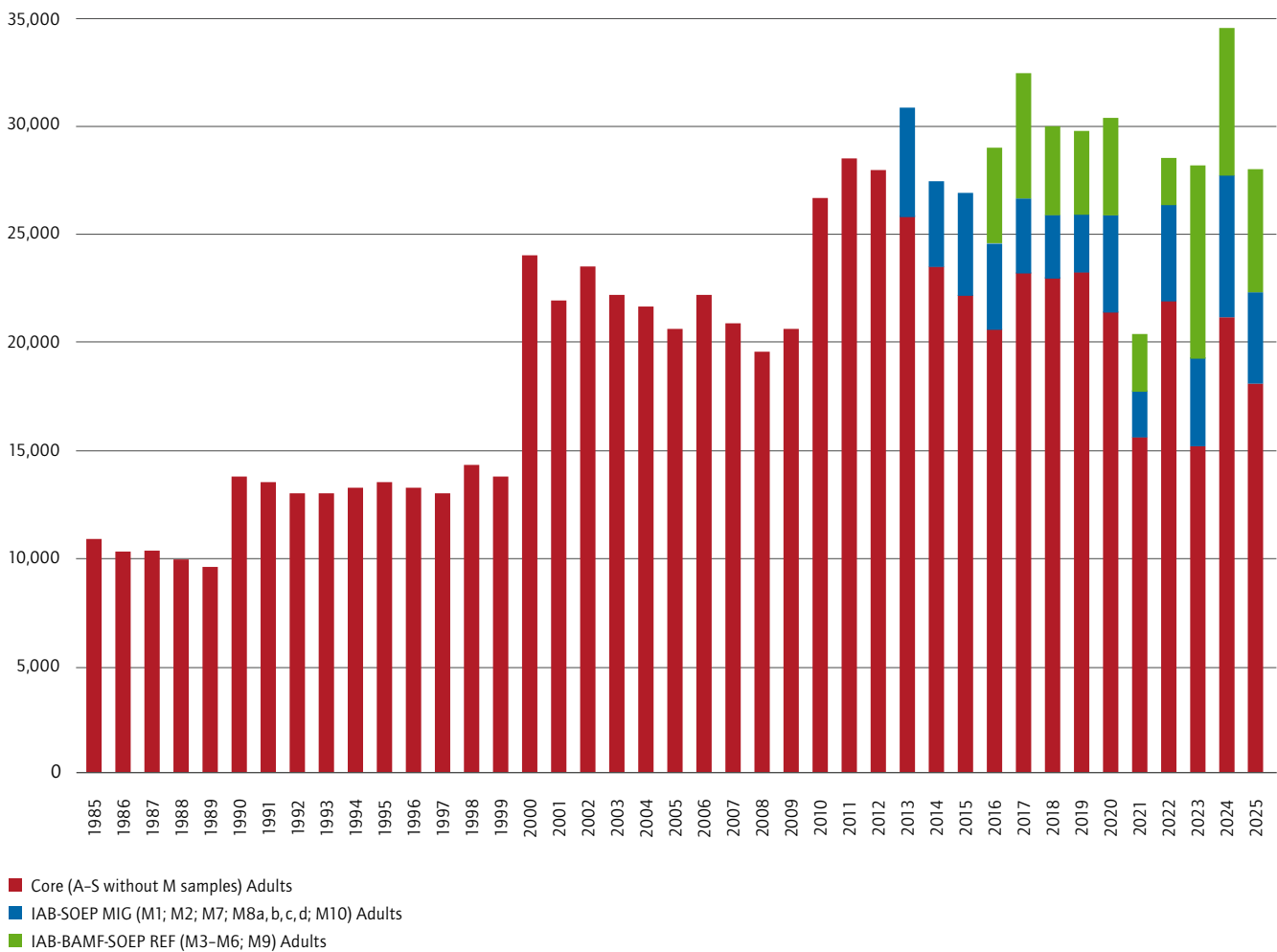
Never in SOEP history had a survey wave started this successfully. The simultaneous launch of two methods (see above) proved to be an important design choice: CAWI starters used the opportunity of taking part without having to schedule an interview, resulting in lower CAPI workload and faster overall processing.

Key topics

In 2025, two central topics were introduced to the questionnaire: attitudes toward artificial intelligence and social distance. The latter refers to individual value priorities that guide human thought, action, and decision-making. Finally, various recurring topics were included in the survey, among others energy consumption, mobility behavior/ carbon footprint, and loneliness.

Katharina Sandbrink, Lennard Liebich, Paula Lingg

Figure 2
Sample sizes, validly realized (adults aggregated)



THE IAB-SOEP MIGRATION AND IAB-BAMF-SOEP REFUGEE SAMPLES

IAB-SOEP Migration Samples

The samples were surveyed between March and mid-October 2025. In total, they comprised 6,289 households and 11,234 individuals. No refresher samples were drawn this year. 50.5 percent of households finished the questionnaire.

IAB-BAMF-SOEP Refugee Samples

The surveys were conducted between the beginning of April and mid-October 2025. The previous mixed-mode design was used, with CAPI as the main mode; CAWI and CASI were switch options.

The overall response rate for households was about as high as in the previous year, with 59 percent of completed questionnaires (2024: 58.5 percent).

Chaima Ballamkadem, Michael Ruland, Theresa Büchner

THE SOEP INNOVATION SAMPLE (SOEP-IS)

Data collection for the 2025 wave was extended into 2026 and is therefore still underway at the time of this report's publication.

New application system

Starting with the latest call for proposals (SOEP-IS 2027), a new module submission system was introduced to create a more efficient and equitable proposal and selection process. In the new two-stage format, researchers first submit a short application outlining their ideas. Those invited to the second stage then develop a full proposal, which is evaluated through peer review. The response to the new system has been very encouraging: for the 2027 wave, SOEP-IS received nearly 60 applications from a broad range of fields, including many international submissions and a notably high share of experimental modules.

Survey Year 2024 and current wave

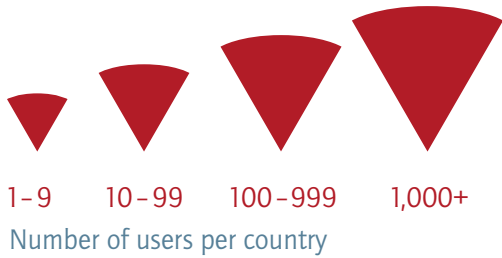
In the most recently completed survey year, 2024, a total of 2,670 households and 3,725 individuals were successfully surveyed. This equals a response rate of around 57 percent. For the survey wave 2025, a new refreshment sample was included to increase the sample size. Eight innovative modules are integrated, covering various topics such as survey methodology (order effects), economics (e.g., measurement of higher order risk references), or psychology (gender identity inventory). In addition to the main questionnaire, respondents will also receive a smell test to identify specific food and environmentally relevant odors in order to identify sensory impairments.

Chaima Ballamkadem, Maximilian Ponert, Thomas Weiß

SOEP USERS AROUND THE WORLD IN 2025

Total number of users: 18,544





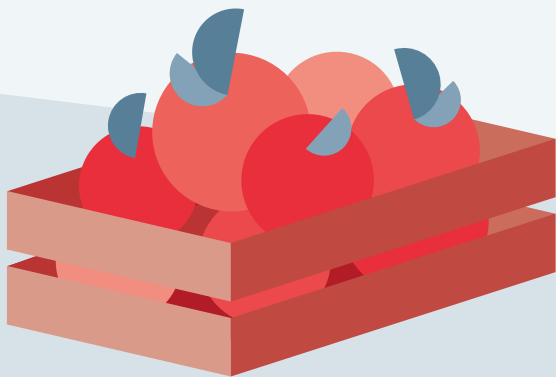
THE SOEP SERVICE PORTFOLIO

Services per Target Group

SOEP follows the Leibniz Transfer Policy. Research findings are communicated to different target groups inside and outside of academia. Mutual exchange is ensured via documentation and information as well as the dialogue with external stakeholders (e.g., feedback by data users).

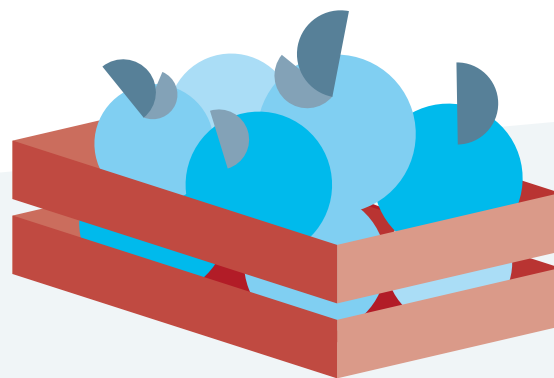
SURVEY RESPONDENTS

- Website www.leben-in-deutschland.de
- Flyer for each survey wave
- Social Report
- Interviewer trainings by infas
- SOEP Annual Report



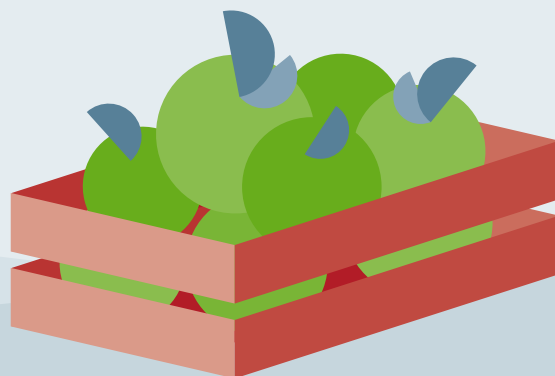
GENERAL PUBLIC

- DIW Weekly Report
- DIW Focus
- DIW Roundup
- Policy Advice Compact
- SOEP Annual Report
- Social Media channels of DIW Berlin
- Social Report
- Quarterly Journal of Economic Research
- Long Night of the Sciences
- Dialogue format „Leibniz im Bundestag“
- External expert groups/committees
- University teaching, talks



(POTENTIAL) DATA USERS

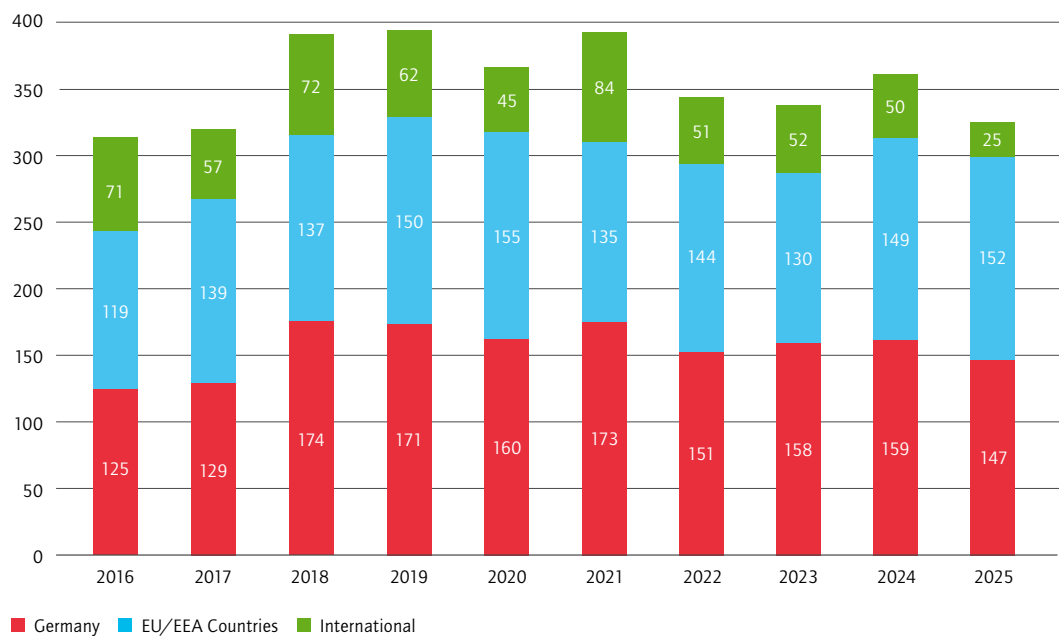
- SOEP homepage
- SOEP Companion
- SOEP-IS Companion
- paneldata.org platform
- SOEP Survey Papers
- SOEPpapers
- SOEP Community Management
- SOEPlit database
- SOEPnewsletter
- International SOEP User Conference
- ad hoc workshops
- SOEP-in-Residence guest program
- SOEPcampus
- SOEPhelp
- SOEP Brown Bag Seminar
- SOEP tutorials/YouTube



NEW DATA USERS IN 2025

Figure 3

Number of New Data Distribution Contracts 2016-2025



The RDC SOEP, which is accredited by the German Data Forum (**RatSWD**), provides the international research community with access to anonymous microdata. Figure 3 presents an overview of the number of data distribution contracts signed each year since 2016. A single data contract usually covers a number of researchers, if not an entire research team.

In 2025, a total of 324 data distribution contracts were signed, and more than 1,383 individual researchers received access to the SOEP data.

The background consists of several overlapping triangles in various shades of red and one prominent lime green triangle. The green triangle is located in the upper right quadrant, pointing towards the top right. The red triangles are in various shades, some darker and some lighter, creating a layered effect. The word 'APPENDIX' is centered in the left half of the image.

APPENDIX

SOEP STAFF AT DIW BERLIN

SOEP DIRECTORATE



Prof. Dr. Sabine Zinn
SOEP Director and Member of
the DIW Berlin Executive Board



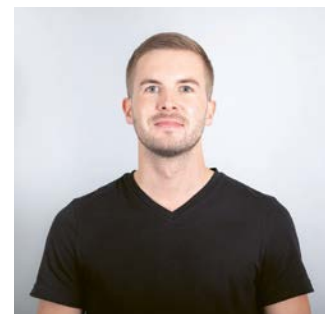
Patricia Axt
Team Assistant



Daniela Centemero
Research Manager



Simon Kleineweber
Research Manager



Maximilian Müller
Team Assistant

SURVEY METHODOLOGY AND MANAGEMENT



Dr. Christian Hunkler
Head of Division Survey
Methodology and Management



Dr. Julian B. Axenfeld
Research Associate



Dr. Louise Biddle
Research Associate



Dr. Adriana Cardozo Silva
Research Associate



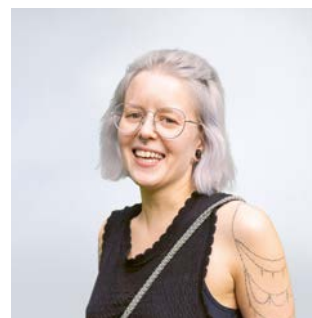
Miriam Gauer
Doctoral Candidate, BAGSS



Martin Gerike
Survey Data Scientist



Florian Griese
Survey Manager



Dr. Angelina Hammon
Research Associate



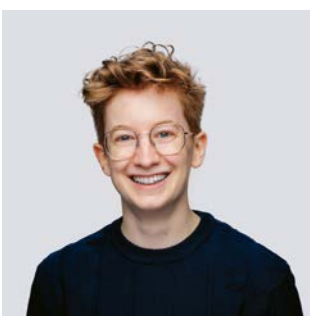
Dr. Jörg Hartmann
Research Associate



Valeriia Heidemann
Doctoral Candidate, BGSS



Dr. Ellen Heidinger
Research Associate



Felix von Heusinger
Doctoral Candidate, BGSS



Char Hilgers
Doctoral Candidate, BGSS



Prof. Dr. Cornelia Kristen
Research Associate, Expert in
Migration and Integration



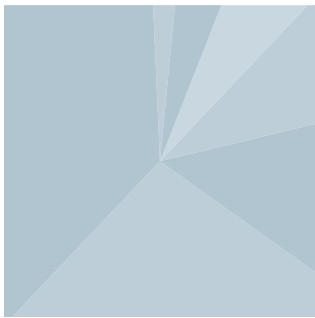
Alexander Lepe
Research Associate



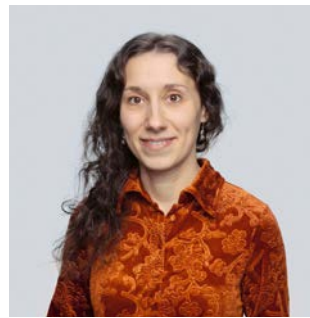
Andrea Marchitto
Research Associate



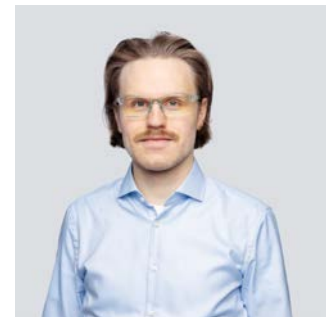
Dr. Mariel McKone Leonard
Research Associate



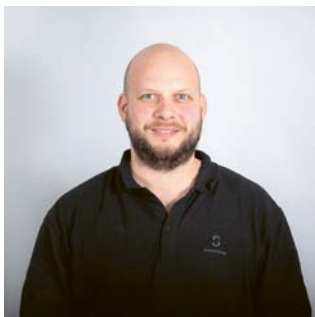
Anna-Tabea Müller
Specialist in Market and Social
Research



Dr. Rebecca Scheffauer
Research Associate



Johannes Schütt
Survey Data Scientist



Rainer Siegers
Survey Data Scientist, Expert
in Sampling/Weighting



Dr. Elena Sommer
Survey Manager



Dr. Hans Walter Steinhauer
Research Associate, Expert in
Sampling/Weighting/Imputation



Felix Süttmann
Doctoral Candidate, BGSS



Alina Zainullina
Specialist in Market and
Social Research



Julia Witton
Doctoral Candidate, BGSS

**DATA
OPERATION
AND RESEARCH
DATA CENTER**



Dr. Jan Goebel
Head of Division Data Operation
and Research Data Center



Philippa Cumming
Research Associate



Dr. Jascha Dräger
Research Associate



Andreas Franken
Survey Data Scientist,
Data Generation and Testing



Xiaoyao Han
Research Associate



Dominique Hansen
Survey Data Scientist, Metadata
and Data Documentation



Tom Hartl
Research Associate



Alexander Jung
Research Associate



Philipp Kaminsky
Community Manager



Selin Kara
Webmaster and Information
Specialist



Antonia Meier
Community Manager



Dr. Neil Murray
Research Associate



Jana Nebelin
Survey Data Scientist,
Data Generation and Testing



Kenny Pedrique
Research Associate



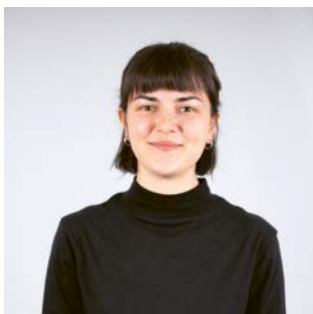
Marvin Petrenz
Survey Data Scientist,
Data Generation and Testing



Denise Rolle
Trainee for Specialist for
Market and Social Research



Claudia Saalbach
Survey Data Scientist,
Data Generation and Testing



Sarah Satilmis
Survey Data Scientist, Data
Generation and Management



Ingo Sieber
Survey Data Scientist, Metadata
and Data Documentation



Paylag Torossian
Research Associate



Knut Wenzig
Survey Data Scientist,
(Meta-)Data Management



Mario Wolf
Doctoral Candidate, BGHS

**APPLIED
PANEL DATA
ANALYSES**



Prof. Dr. Carsten Schröder
Head of Division Applied Panel
Data Analyses



Dr. Charlotte Bartels
Research Associate



Dr. Mattis Beckmannshagen
Research Associate



Dr. Theresa Entringer
Research Associate



Rayisa Gitina
Data Scientist



Dr. Daniel Graeber
Research Associate



Alexander Grawe
Doctoral Candidate DIW GC



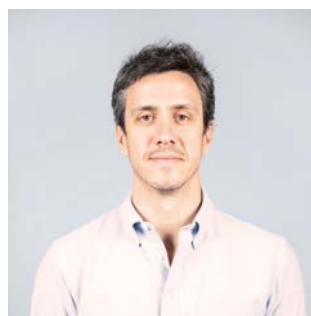
Viola Hilbert
Doctoral Candidate BSoE/DIW GC



Blanka Imre, Ph.D.
Research Associate



Daniel Labarca Pinto
Research Associate



Gedeão Locks, Ph.D.
Research Associate



Marianna Magagnoli,
Ph.D. Research Associate



Lotte Maaßen
Doctoral Candidate DIW GC



Dr. Emilija Meier-Faust
Research Associate



Lorenz Meister
Doctoral Candidate DIW GC



**Prof. (em.) Dr. Lukas
Menkhoff**
Research Associate



Levent Neyse, Ph.D.
Head of SOEP Innovation Sample



Rebecca Olthaus
Doctoral Candidate DIW GC



Isabella Retter
Research Associate



Thomas Rieger
Doctoral Candidate DIW GC



Dr. Johannes Seebauer
Research Associate



Dr. Barbara Stacherl
Research Associate



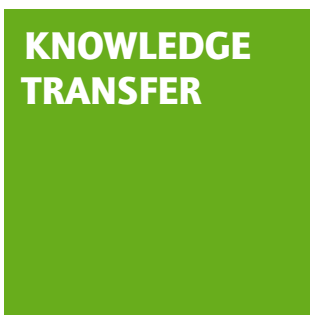
Yogam Tchokni
Doctoral Candidate DIW GC



Francesca Verga
Doctoral Candidate DIW GC



Dr. Juliane Zenker
Research Associate



Prof. Dr. Sabine Zinn
Head of Division Knowledge
Transfer



Janina Britzke
Event Manager and Information
Specialist



Elisa Grabas
Webmaster and Information
Specialist



Dr. Markus M. Grabka
Research Associate



Dr. Cristóbal Moya
Research Associate



Verena Neumann
Communications Officer

**RESEARCH
GROUP
"LIFE COURSE
AND
INEQUALITY"**



Prof. Dr. Philipp M. Lersch
Research Group Leader



Dr. Sascha dos Santos
Research Associate



Mathis Herpell
Doctoral Candidate, BGSS



Dr. Bettina Hünteler
Research Associate

DIW HONORARY FELLOW AT SOEP



Prof. em. Dr. Jürgen Schupp

DIW RESEARCH FELLOWS AT SOEP

Prof. Conchita D'Ambrosio, Ph.D., *University of Luxembourg*
Dr. Annette Brose, *Humboldt-Universität zu Berlin*
Prof. Dr. John P. de New, *University of Melbourne*
Prof. Dr. Marcel Erlinghagen, *University of Duisburg-Essen*
Prof. Nicola Fuchs-Schündeln, Ph.D., *Goethe University Frankfurt*
Prof. Dr. Jürgen Gerhards, *Freie Universität Berlin*
Prof. Dr. Denis Gerstorff, *Humboldt-Universität zu Berlin*
Prof. Dr. Johannes Giesecke, *Humboldt-Universität zu Berlin*
Dr. Marco Giesselmann, *University of Zurich*
Prof. Dr. Karsten Hank, *University of Cologne*
Prof. Jennifer Hunt, Ph.D., *Rutgers University*
Prof. Guillermina Jasso, Ph.D., *New York University*
Prof. Dr. Monika Jungbauer-Gans, *Leibniz University Hanover and DZHW*
Prof. Dr. Michaela Kreyenfeld, *Hertie School*
Prof. Dr. Simone Kühn, *University Clinic Hamburg-Eppendorf*
Prof. Richard E. Lucas, Ph.D., *Michigan State University*
Prof. Dr. Maike Luhmann, *Ruhr-Universität Bochum*
Prof. Dr. Wenzel Matiaske, *Helmut-Schmidt-University Hamburg*
Prof. Fabian T. Pfeffer, Ph.D., *Ludwig-Maximilians-Universität München*
Prof. Dr. Katrin Rehdanz, *Kiel University (CAU), Kiel*
Prof. Regina T. Riphahn, Ph.D., *Friedrich-Alexander-Universität Erlangen-Nürnberg*
Prof. Dr. Christian von Scheve, *Freie Universität Berlin*
Prof. Dr. Jörg-Peter Schräpler, *Ruhr-Universität Bochum*
Eva Sierminska, Ph.D., *Luxembourg Institute of Socio-Economic Research: LISER*
Dr. Arne Uhendorff, *Center for Research in Economics and Statistics: CREST*
Prof. Mark Wooden, *University of Melbourne*

SCIENTIFIC OUTPUT

SOEP-BASED WEB OF SCIENCE™ PUBLICATIONS: SOEP STAFF AND USER COMMUNITY

Overview of SOEP-Based Web of Science™ Core Collection Publications over the Last Decade

Figure 4

SOEP-Based Web of Science™ Core Collection Publications 2015-2025

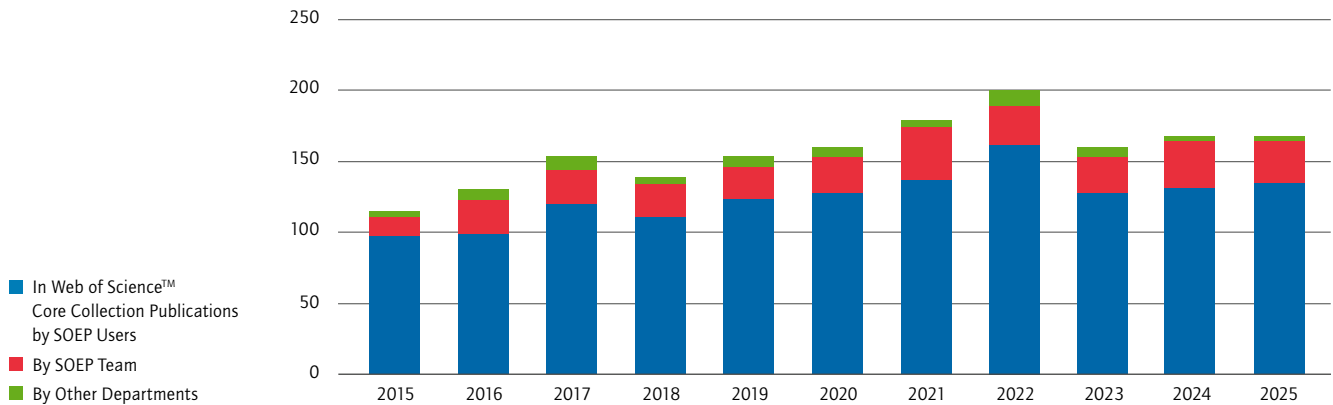
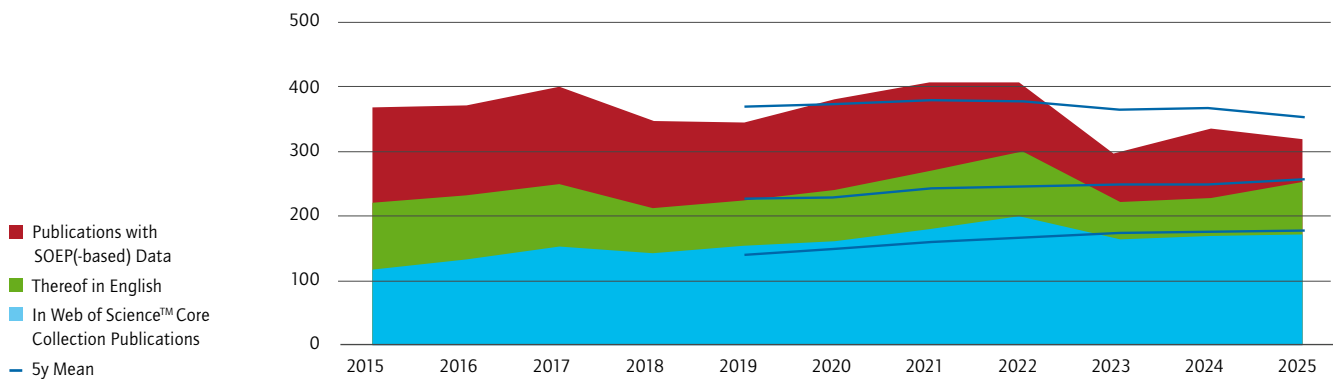


Figure 5

SOEP-Based Publications by the SOEP User Community 2015-2025



SOEP Staff: List of Web of Science™ Core Collection Publications

Please find
the top
publications of
2025 also on
pages 18–20.

A

Adena, Maja, Steffen Huck, and Levent Neyse. 2025. Gratitude in fundraising: do 'thank you in advance' and handwritten thank you notes impact fundraising success? *Experimental Economics* (online first), 1–10. (<http://doi.org/10.1017/eec.2025.10033>)

Alaze, Anita, Ellen Heidinger, Oliver Razum, and Odile Sauzet. 2025. Does perceived social cohesion moderate the effect of parental stressors on depressive symptoms? A longitudinal, multi-level analysis before and during the COVID-19 pandemic. *Journal of Mental Health* (online first), 1–9. (<http://doi.org/10.1080/09638237.2025.2460121>)

Axenfeld, Julian B., Christian Bruch, and Christof Wolf. 2025. Composition of core modules and item allocation in split questionnaire designs: impact on estimates from imputed data. *International Journal of Social Research Methodology* (online first), 24. (<http://doi.org/10.1080/13645579.2025.2561653>)

B

Bartels, Charlotte, Felix Kersting, and Nikolaus Wolf. 2025. Testing Marx: Capital Accumulation, Income Inequality, and Socialism in Late Nineteenth-Century Germany. *The Review of Economics and Statistics* 107 (4), 935–950. (http://doi.org/10.1162/rest_a_01305)

Bartels, Charlotte, Eva Sierminska, and Carsten Schröder. 2025. Wealth Creators or Inheritors? Unpacking the Gender Wealth Gap from Bottom to Top and Young to Old. *Economics Letters* 246, 111997. (<http://doi.org/10.1016/j.econlet.2024.111997>)

Bartig, Susanne, Adriana Cardozo Silva, and Louise Biddle. 2025. Mental health of Ukrainian refugees in Germany: results of the IAB-BAMF-SOEP survey. *European Journal of Public Health* 35, Supplement 6. (<http://doi.org/10.1093/eurpub/ckaf180.138>)

Beckmannshagen, Mattis, Johannes König, Isabella Retter, Christian Schluter, Carsten Schröder, et al. 2025. Dealing with Censored Earnings in Register Data. *Jahrbücher für Nationalökonomie und Statistik* (online first), (<http://doi.org/10.1515/jbnst-2024-0037>)

Beckmannshagen, Mattis and Johannes Koenig. 2025. Out for good: Transitory and persistent labor market effects of heterogeneous health shocks. *Labour Economics* 96, 102747. (<http://doi.org/10.1016/j.labeco.2025.102747>)

Biddle, Louise, Andrea Marchitto, and Sabine Zinn. 2025. Pre- and post-migration determinants of self-rated health among Ukrainian refugees in Germany: A cross-sectional comparative analysis with recently arrived refugees from other countries of origin. *PLOS Global Public Health* 5 (11), e0004565. (<http://doi.org/10.1371/journal.pgph.0004565>)

Biddle, Louise, Barbara Stacherl, and Ellen Heidinger. 2025. Perceived discrimination among migrants in Germany: Does social capital moderate harmful effects on mental health? *Social Science & Medicine* 370, 117854. (<http://doi.org/10.1016/j.socscimed.2025.117854>)

Breznau, Nate, Eike Mark Rinke, Alexander Wuttke, Muna Adem, Jule Adriaans, et al. 2025. The reliability of replications: a study in computational reproductions. *Royal Society Open Science* 12 (3), 241038. (<http://doi.org/10.1098/rsos.241038>)

Brücker, Herbert, Yuliya Kosyakova, Nina Rother, Sabine Zinn, Elisabeth Liebau, et al. 2025. Exploring integration and migration dynamics: the research potentials of a large-scale longitudinal household study of refugees in Germany. *European Sociological Review* (online first), (<http://doi.org/10.1093/esr/jcaf032>)

C

Caliendo, Marco, Rebecca Olthaus, and Nico Pestel. 2025. Long-term employment effects of the minimum wage in Germany: New data and estimators. *Labour Economics* 92, 102648. (<http://doi.org/10.1016/j.labeco.2024.102648>)

Cornesse, Carina, Julia Witton, Julian B. Axenfeld, Jean-Yves Gerlitz, and Olaf Groh-Samberg. 2025. From Concurrent to Push-To-Web Mixed-Mode: Experimental Design Change in the German Social Cohesion Panel. *Social Science Computer Review* (online first), 1–20. (<http://doi.org/10.1177/08944393251403501>)

D

Décieux, Jean Philippe, Sabine Zinn, and Andreas Ette. 2025. Effects of Changing the Incentive Strategy on Panel Performance: Experimental Evidence From a Probability-Based Online Panel of Refugees. *Survey Research Methods* 19 (2), 223–239. (<http://doi.org/10.18148/srm/2025.v19i2.8437>)

Dräger, Jascha, Markus Klein, and Edward Sosu. 2025. Does the impact of pupil absences on achievement depend on their timing? *American Educational Research Journal* (online first). (<http://doi.org/10.3102/00028312251347666>)

Dräger, Jascha, Nora Müller, and Klaus Pfarr. 2025. The keys to the house: How wealth transfers stratify homeownership opportunities. *Social Science Research* 129, 103190. (<http://doi.org/10.1016/j.ssresearch.2025.103190>)

E

El-Awad, Usama, Robert Eves, Justin Hachenberger, Kayvan Bozorgmehr, Theresa M. Entringer, et al. 2025. Post-migration stress mediates associations between potentially traumatic peri-migration experiences and mental health among Middle Eastern refugees in Germany. *BMC Public Health* 25 (1), 2582. (<http://doi.org/10.1186/s12889-025-23660-w>)

El-Awad, Usama, Robert Eves, Justin Hachenberger, Theresa M. Entringer, Robin Goodwin, et al. 2025. Mapping Life Satisfaction Over the First Years of Cohabitation Among Former Singles Living Alone in UK and Germany. *Journal of Personality* (online first), 1–12. (<http://doi.org/10.1111/jopy.70013>)

F

Fraemke, Deniz, Yayouk E. Willems, Aysu Okbay, Ulman Lindenberger, Sabine Zinn, et al. 2025. Polygenic Associations With Educational Attainment in East Versus West Germany: Differences Emerge After Reunification. *Psychological Science* 36 (7), 559–573. (<http://doi.org/10.1177/09567976251350965>)

G

Gerber, Monica M., Luciano Sáez-Fuentealba, Joaquín Bahamondes, Ana Figueiredo, Cristóbal Moya, et al. 2025. How do individuals interact with the police? Validation of a scale of motivational postures toward the police in Spanish. *Peace and Conflict: Journal of Peace Psychology* 31 (3), 285–298. (<http://doi.org/10.1037/pac0000797>)

Ghose, Urmimala, Michael D. Krämer, David Richter, Gert G. Wagner, Frank J. Infurna, et al. 2025. How Spousal Bereavement Shapes Life Satisfaction: Stability and Change across Historical Time. *European Journal of Personality* (Online First), (<http://doi.org/10.1093/geronj/igad104.3400>)

Gnams, Timo, Jan-Philipp Stein, Markus Appel, Florian Griese, and Sabine Zinn. 2025. An economical measure of attitudes towards artificial intelligence in work, healthcare, and education (ATTARI-WHE). *Computers in Human Behavior: Artificial Humans* 3, 100106. (<http://doi.org/10.1016/j.chbah.2024.100106>)

Gnams, Timo, Jan-Philipp Stein, Sabine Zinn, Florian Griese, and Markus Appel. 2025. Attitudes, experiences, and usage intentions of artificial intelligence: A population study in Germany. *Telematics and Informatics* 98, 102265. (<http://doi.org/10.1016/j.tele.2025.102265>)

Gold, Andreas W., Clara Perplies, Louise Biddle, and Kayvan Bozorgmehr. 2025. Primary healthcare models for refugees involving nurses: a systematic review and narrative synthesis. *BMJ Global Health* 10 (3), e018105. (<http://doi.org/10.1136/bmjgh-2024-018105>)

Goyanes, Manuel, Hui Min Lee, Rebecca Scheffauer, and Homero Gil de Zúñiga. 2025. Linking Social Media News Use, AI Interest, and Political Ideology With AI Subjective Knowledge: A Moderated Mediation Model Across Two Countries. *Social Media + Society* 11 (4). (<http://doi.org/10.1177/20563051251399008>)

H

Halbmeier, Christoph and Carsten Schröder. 2025. The Long-Term Implications of Destruction During the Second World War on Private Wealth in Germany. *Journal of Economic Growth* 30, 161-235. (<http://doi.org/10.1007/s10887-024-09242-2>)

Hammon, Angelina and Sabine Zinn. 2025. Validating an Index of Selection Bias for Proportions in Non-Probability Samples. *International Statistical Review* 93 (3), 499-516. (<http://doi.org/10.1111/insr.12590>)

Hartmann, Jörg and Peter Preisendörfer. 2025. Less meat on the table: findings from the German Socio-Economic Panel 2016-2022. *Journal of Hunger & Environmental Nutrition (online first)*, 1-14. (<http://doi.org/10.1080/19320248.2025.2501156>)

Heidemann, Valeriia, Sabine Zinn, and Louise Biddle. 2025. Early childhood development among voluntary and forced migrants: evidence from Germany. *European Journal of Public Health* 35 (1). (<http://doi.org/10.1093/eurpub/ckaf161.189>)

Herpell, Mathis, Moritz Marbach, Niklas Harder, Alexandra Orlova, Dominik Hangartner, et al. 2025. The impact of private hosting on the integration of Ukrainian refugees in Germany. *Nature Human Behaviour* 9, 2249-2260. (<http://doi.org/10.1038/s41562-025-02303-5>)

Hünteler, Bettina, Karsten Hank, Diego Albrez-Gutierrez, and Thomas Leopold. 2025. Younger adults' nuclear and extended family relationships in Europe: A latent class analysis. *Journal of Marriage and Family* 88 (1), 284-298. (<http://doi.org/10.1111/jomf.70014>)

J

Jahn, Rosa, Clara Perplies, Eilin Rast, Louise Biddle, Andreas W. Gold, et al. 2025. Health system resilience in the context of forced migration: a qualitative framework analysis of Germany's crisis responses in 2015 and 2020. *Social Science & Medicine* 381, 118174. (<http://doi.org/10.1016/j.socscimed.2025.118174>)

Jordan, Susanne, Sarah Jane Böttger, and Sabine Zinn. 2025. The persuasiveness of different sources of information on the decision to vaccinate. A cross-sectional study in Germany during the pandemic at the turn of the year 2021/2022. *PLOS ONE* 20 (9), e0333268. (<http://doi.org/10.1371/journal.pone.0333268>)

Jordan, Susanne, Sarah Jane Böttger, and Sabine Zinn. 2025. Bedeutung von Informationsquellen für das Impfverhalten – Erkenntnisse aus der COVID-19-Pandemie. *Gesundheitswesen* 87 (S 01), 64-65. (<http://doi.org/10.1055/s-0045-1802019>)

K

Kapelle, Nicole, Nicolas Frémeaux, Philipp M. Lersch, and Marion Leturcq. 2025. A cohabitation wealth premium for women and men: considering the regulatory framework and normative acceptance in France and Germany. *Socio-Economic Review* 23 (2), 591-620. (<http://doi.org/10.1093/ser/mwaf013>)

Klinke, Dennis, Jannes Jacobsen, Manuel Dierse, Thorsten Faas, Denis Gerstorff, et al. 2025. Social media sampling is an effective way to access hard to survey populations and low prevalence groups. *International Journal of Social Research Methodology (online first)*, 1-20. (<http://doi.org/10.1080/13645579.2025.2564866>)

König, Johannes and Maximilian Longmuir. 2025. Wage Risk and Portfolio Choice: The Role of Correlated Returns. *International Review of Financial Analysis* 100, 103985. (<http://doi.org/10.1016/j.irfa.2025.103985>)

König, Johannes, Christian Schluter, and Carsten Schröder. 2025. Routes to the Top. *The Review of Income and Wealth* 71 (2), e70015. (<http://doi.org/10.1111/roiw.7005>)

König, Johannes, Christian Schluter, Carsten Schröder, Isabella Retter, and Mattis Beckmannshagen. 2025. The beyondpareto command for optimal extreme-value index estimation. *The Stata Journal* 25 (1), 169-188. (<http://doi.org/10.1177/1536867x251322969>)

Krämer, Michael D., Julia M. Rohrer, Richard E. Lucas, and David Richter. 2025. Life Events and Life Satisfaction: Estimating Effects of Multiple Life Events in Combined Models. *European Journal of Personality* 39 (1), 3-23. (<http://doi.org/10.1177/08902070241231017>)

L

Laurence, James and Jan Goebel. 2025. Immigration, segregation, and attitudes toward immigrants: a longitudinal multiscalar analysis across ego-hoods. *European Sociological Review* 41 (4), 553–574. (<http://doi.org/10.1093/esr/jcae045>)

Legewie, Nicolas M, Philipp Jaschke, Magdalena Krieger, Martin Kroh, and Lea-Maria Löbel. 2025. Support for everyone or selection of some? Self-selection and assignment into a large-scale refugee mentoring program in Germany. *European Sociological Review* (online first), jcaf033. (<http://doi.org/10.1093/esr/jcaf033>)

Lersch, Philipp M. 2025. Wealth and Family Formation: Insights from First Cohabitation, Marriage, and Birth in Germany. *European Journal of Population* 41 (1), 16. (<http://doi.org/10.1007/s10680-025-09738-6>)

Locks, Gedeao. 2025. Mortality inequality in Chile. *Fiscal Studies* 46 (1), 139–162. (<http://doi.org/10.1111/1475-5890.12387>)

M

Meier-Faust, Emilija, Annelie Schulze, Yannick Martin, Annabell Daniel, and Susanne Bergann. 2025. Personality in the classroom: Interactions of parental SES and students' Big Five in predicting school performance. *European Journal of Personality* (online first). (<http://doi.org/10.1177/08902070251400510>)

Meister, Lorenz, Lukas Menkhoff, and Carsten Schröder. 2025. Stock Market Participation, Work from Home, and Inequality. *International Review of Financial Analysis* 107, November 2025, 104604. (<http://doi.org/10.1016/j.irfa.2025.104604>)

Mercuri, Elisabetta, Lorenz Schmid, Christina Poethko-Müller, Martin Schlaud, Cana Kussmaul, et al. 2025. Nationwide population-based infection- and vaccine- induced SARS-CoV-2 antibody seroprevalence in Germany in autumn/winter 2021/2022. *Eurosurveillance* 30 (1). (<http://doi.org/10.2807/1560-7917.Es.2025.30.1.2400037>)

P

Pietrolucci, Andrea, Jascha Dräger, Nora Müller, and Marco Albertini. 2025. The educational wealth divide in Europe: Post-secondary enrollment gaps across parental wealth components and countries. *Research in Social Stratification and Mobility* 99, 101086. (<http://doi.org/10.1016/j.rssm.2025.101086>)

S

Stacherl, Barbara and Theresa M. Entringer. 2025. From feeling depressed to getting diagnosed: Determinants of a diagnosis of depression after experiencing symptoms. *International Journal of Social Psychiatry* 71 (4), 723–737. (<http://doi.org/10.1177/00207640241303038>)

Stein, Annika, Tobias Gummer, Elias Naumann, Björn Rohr, Henning Silber, et al. 2025. Education bias in probability-based surveys in Germany: evidence and possible solutions. *International Journal of Social Research Methodology*, 1–18. (<http://doi.org/10.1080/13645579.2025.2508889>)

T

Touzel, Victoria, Doreen Reifegerste, Kayvan Bozorgmehr, and Louise Biddle. 2025. Impact of social isolation on mental health changes by socio-economic status: A moderated mediation analysis among non-migrant, migrant, and refugee subpopulations in Germany, 2016–2020. *SSM – Population Health* 31, 101822. (<http://doi.org/10.1016/j.ssmph.2025.101822>)

SOEP User Community: List of Web of Science™ Core Collection Publications

A

Akay, Alpaslan and Levent Yilmaz. 2025. "Status" concerns and self-employment transitions. *Small Business Economics (online first)*. (<http://doi.org/10.1007/s11187-025-01051-0>)

Attewell, David, Andreas Jozwiak, and Eroll Kuhn. 2025. Backlash or Inclusion? The Political Effects of Co-Ethnic Immigration. *Political Behavior* 47 (3), 1413–1434. (<http://doi.org/10.1007/s11109-024-09995-x>)

B

Baktash, Mehrzad B. 2025. Does Performance Pay Increase the Risk of Worker Loneliness? *Kyklos* 79 (1), 129–148. (<http://doi.org/10.1111/kykl.70018>)

Baktash, Mehrzad B. 2025. Overeducation, performance pay and wages: evidence from Germany. *Education Economics (online first)*, 1–21. (<http://doi.org/10.1080/09645292.2025.2546445>)

Baktash, Mehrzad B., John S. Heywood, and Uwe Jirjahn. 2025. Variable pay and work hours: does performance pay reduce the gender time gap? *Economica* 92 (368), 1149–1167. (<http://doi.org/10.1111/ecca.70004>)

Baktash, Mehrzad B. and Lisa Pütz. 2025. Detach to Thrive: Psychological Detachment from Work and Employee Well-Being. *Journal of Happiness Studies* 26 (4), 54. (<http://doi.org/10.1007/s10902-025-00883-7>)

Batruch, Anatolia and Manon A. van Scheppingen. 2025. Social Class and Personality: The Effects of Educational Mobility on Personality Trait Change. *Social Psychological and Personality Science (online first)*. (<http://doi.org/10.1177/19485506251326333>)

Bau, Jessica T., Simon Götz, Adrian Loerbroks, and Claudia R. Pischke. 2025. The association of status transitions from school to work with leisure-time physical activity on weekdays: a longitudinal analysis of data from the German Socio-Economic Panel. *BMC Public Health* 25 (1). (<http://doi.org/10.1186/s12889-025-23739-4>)

Bernini, Andrea and Sven A. Hartmann. 2025. The effect of West German television on smoking and health: A natural experiment from German reunification. *Journal of Health Economics* 104. (<http://doi.org/10.1016/j.jhealeco.2025.103077>)

Birkelbach, Klaus, Heiner Meulemann, Christian Sondergeld, and Veronika Witt. 2025. Private Life Preference and Life Satisfaction. *Applied Research in Quality of Life* 20 (3), 1139–1162. (<http://doi.org/10.1007/s11482-025-10445-x>)

Boelmann, Barbara, Anna Raute, and Uta Schönberg. 2025. Wind of Change? Cultural Determinants of Maternal Labor Supply. *American Economic Journal: Applied Economics* 17 (2), 41–74. (<http://doi.org/10.1257/app.20220567>)

Bogusz, Honorata, Anna Matysiak, and Michaela Kreyenfeld. 2025. Structural labour market change, cognitive work, and entry to parenthood in Germany. *Population Studies* 79 (2), 225–251. (<http://doi.org/10.1080/00324728.2024.2372018>)

Boller, Daniel, Michael Lechner, and Gabriel Okasa. 2025. The effect of sport in online dating: evidence from causal machine learning. *Humanities and Social Sciences Communications* 12 (1). (<http://doi.org/10.1057/s41599-025-04566-9>)

Borah, Melanie, Andreas Knabe, and Christine Lücke. 2025. Is a sorrow shared a sorrow doubled? Parental unemployment and the life satisfaction of adolescent children. *Review of Economics of the Household (online first)*. (<http://doi.org/10.1007/s11150-025-09781-6>)

Borraz, Fernando, Nicolás González Pampillón, and Susan Pozo. 2025. Exchange-rate pass-through and the currency of denomination of workers' remittances. *Review of World Economics*. (<http://doi.org/10.1007/s10290-025-00609-0>)

Brehm, Johannes, Nico Pestel, Sandra Schaffner, and Laura Schmitz. 2025. From Low Emission Zone to academic track: Environmental policy effects on educational achievement in elementary school. *Journal of Environmental Economics and Management* 132. (<http://doi.org/10.1016/j.jeem.2025.103165>)

Buchner, Martin and Miriam Rehm. 2025. Energy poverty and health: Micro-level evidence from Germany. *Energy Economics* 145, 108376. (<http://doi.org/10.1016/j.eneco.2025.108376>)

Bürmann, Marvin and Dorian Tzolak. 2025. Much to lose, no credentials to prove it – Educational aspirations and intentions of adult refugees as means of occupational status re-attainment. *European Sociological Review* 41 (4), 516–537. (<http://doi.org/10.1093/esr/jcaf010>)

C

Calvo, Paula, Ilse Lindenlaub, and Lindsey Uniat. 2025. Motherhood penalty in consumption. *Economics Letters* 257, 112650. (<http://doi.org/10.1016/j.econlet.2025.112650>)

Chadi, Adrian and Clemens Hetschko. 2025. Income or leisure? On the hidden benefits of (un)employment. *European Economic Review* 171, 104879. (<http://doi.org/10.1016/j.eurocorev.2024.104879>)

Cohen, Denis and Sergi Pados-Prado. 2025. Regional Labor Markets, Residential Mobility, and Anti-Immigration Sentiment. *British Journal of Political Science* 55. (<http://doi.org/10.1017/S0007123425101038>)

Consiglio, Valentina and Thomas Kurer. 2025. Seeking Opportunity in the Knowledge Economy: Moving Places, Moving Politics? *British Journal of Political Science* 55. (<http://doi.org/10.1017/S0007123425100677>)

D

De Moortel, Deborah, Rebeka Balogh, Miriam Engels, and Julie Vanderleyden. 2025. Employment quality and mental health in Germany: The mismatch of low employment quality with work and family values by gender. *Social Science & Medicine* 371, 117906. (<http://doi.org/10.1016/j.socscimed.2025.117906>)

Decker, Viktor, Marie Labussière, and Thijs Bol. 2025. How routine tasks affect labor market inequalities between vocational and tertiary graduates over the career. *Social Science Research* 131, 103207. (<http://doi.org/10.1016/j.ssresearch.2025.103207>)

Di Meo, Giovanni and Onur Eryilmaz. 2025. The impacts of health shocks on household labor supply and domestic production. *Journal of Health Economics* 101, 102992. (<http://doi.org/10.1016/j.jhealeco.2025.102992>)

Dierker, Philipp, Mine Kühn, and Mikko Myrskylä. 2025. Selective re-partnering? Mental health and life satisfaction among separated single mothers in Germany and the UK. *Acta Sociologica (online first)*. (<http://doi.org/10.1177/00016993241300435>)

Dierker, Philipp, Mine Kühn, and Mikko Myrskylä. 2025. Re-partnering and single mothers' mental health and life satisfaction trajectories. *Journal of Marriage and Family* 87 (1), 157–181. (<http://doi.org/10.1111/jomf.13015>)

Doan, Tinh, Liana Leach, and Lyndall Strazdins. 2025. The Economic Costs of Men's Long Work Hours for Women: Evidence on the Gender Wage Earnings Gap from Australia and Germany. *Social Indicators Research* 179 (2), 1073–1100. (<http://doi.org/10.1007/s11205-025-03647-1>)

E

Eckes, Theresa and Steffen Nestler. 2025. I'm Changing and I Know It? – A Daily Diary Study Concerning People's Ability To Identify Sudden Gains and Losses. *Journal of Psychopathology and Behavioral Assessment* 47 (4), 16. (<http://doi.org/10.1007/s10862-025-10242-8>)

F

Faininger, Rudolf and Svenja Flechtner. 2025. Migrant wealth in Germany. *Journal of Economic Inequality (online first)*. (<http://doi.org/10.1007/s10888-025-09668-7>)

Farugie, A., L. M. Maukel, and A. N. Tibubos. 2025. The moderating effect of neuroticism on the relationship of migration status and health-related quality of life in Germany: a population-based study. *Health and Quality of Life Outcomes* 23 (1). (<http://doi.org/10.1186/s12955-025-02380-0>)

Ferrara, Alessandro, Jan P. Heisig, Jonas Radl, and Alena Scheinert. 2025. Parental Health Shocks and Child Outcomes at Ages 17–25: Evidence From Germany. *Journal of Marriage and Family (online first)*. (<http://doi.org/10.1111/jomf.13124>)

Finne, Emily, Anna Christina Nowak, and Oliver Razum. 2025. Regional COVID-19 measures and effects on subjective well-being in Germany: observing trends over time with data from a large population survey. *Frontiers in Public Health* 13, 1523691. (<http://doi.org/10.3389/fpubh.2025.1523691>)

Foley, William, Lea Kröger, and Jonas Radl. 2025. Parental support and diversity in sibling personality. *Advances in Life Course Research (online first)*, 100658. (<http://doi.org/10.1016/j.alcr.2025.100658>)

Frank, Emily and Anton Nivorozhkin. 2025. Legal status and refugees' perceptions of institutional justice: The role of communication quality. *Public Administration Review* 85 (4), 1004–1018. (<http://doi.org/10.1111/puar.13898>)

Friehe, Tim and Christian Pfeifer. 2025. Risk tolerance and altruism: evidence on their relationship from Germany. *Applied Economics Letters (online first)*, 1–5. (<http://doi.org/10.1080/13504851.2025.2536709>)

Friehe, Tim and Christian Pfeifer. 2025. Unemployment's Life-Satisfaction Cost and Loneliness. *Journal of Happiness Studies* 26 (6), 102. (<http://doi.org/10.1007/s10902-025-00941-0>)

G

Geißler, Theresa. 2025. What an (Un) Favorable Match: Public Sector Employment and the Reversal of the Overeducation-Job Satisfaction Penalty. *Journal of Happiness Studies* 26 (6), 94. (<http://doi.org/10.1007/s10902-025-00926-z>)

Giebel, Marek and Alexander Lammers. 2025. The Impact of a New Workplace Technology on Employees. *Oxford Bulletin of Economics and Statistics* 87 (5), 1003–1024. (<http://doi.org/10.1111/obes.12674>)

Giering, Oliver and Stefan Kirchner. 2025. Artificial intelligence and autonomy at work: empirical insights from Germany. *Journal for Labour Market Research* 59 (1), 20. (<http://doi.org/10.1186/s12651-025-00401-5>)

Gioachin, Filippo and Kristian Bernt Karlson. 2025. Family background and life cycle earnings volatility: evidence from brother correlations in Denmark, Germany, and the United States. *Social Forces* 104 (1), 112–132. (<http://doi.org/10.1093/sf/soaf017>)

Giuntella, Osea, Johannes König, and Luca Stella. 2025. Artificial intelligence and the well-being of workers. *Scientific Reports* 15 (1). (<http://doi.org/10.1038/s41598-025-98241-3>)

Goerke, Laszlo and Markus Pannenberg. 2025. Minimum wage non-compliance: the role of co-determination. *European Journal of Law and Economics* 60 (2), 365–402. (<http://doi.org/10.1007/s10657-024-09811-1>)

Gorges, Julia. 2025. Global motivation to learn and adult learning: A nomological network analysis and a four-year longitudinal study. *Learning and Individual Differences* 123, 102763. (<http://doi.org/10.1016/j.lindif.2025.102763>)

Görtz, Antonia. 2025. Does International Mobility Pay Off? Comparing Labour Market Success of Recent German Remigrants and the German Stayer Population. *Population, Space and Place* 31 (8), e70121. (<http://doi.org/10.1002/psp.70121>)

Grätz, Michael and Sonia Petrini. 2025. The role of polygenic indices in inequality of opportunity. *PNAS Nexus* 4 (5). (<http://doi.org/10.1093/pnasnexus/pgaf140>)

Grochtdreis, Thomas, Hans-Helmut König, and Judith Dams. 2025. Migration-related determinants of health-care service utilization among persons with a direct migration background in Germany: an exploratory study based on the German Socio-Economic Panel (SOEP). *The European Journal of Health Economics* 26 (2), 313–323. (<http://doi.org/10.1007/s10198-024-01708-9>)

Groß, Daniel and Carl-Walter Kohlmann. 2025. Physical activity, health, and life satisfaction: Four panel studies demonstrate reciprocal effects. *Applied Psychology: Health and Well-Being* 17 (2), e70027. (<http://doi.org/10.1111/aphw.70027>)

Günther, Tom, Jakob Conradi, and Clemens Hetschko. 2025. Socialism, identity and the well-being of unemployed women. *Labour Economics* 95, 102752. (<http://doi.org/10.1016/j.labeco.2025.102752>)

H

Haehner, Peter, Michael D. Krämer, Amanda J. Wright, and Wiebke Bleidorn. 2025. Life events and personality trait change: A coordinated data analysis. *European Journal of Personality* (online first). (<http://doi.org/10.1177/08902070251356148>)

Hajji, Rahim. 2025. Loneliness among refugees in Germany – On the significance of flight, host country conditions and personality traits. *Journal of Public Health* (online first). (<http://doi.org/10.1007/s10389-025-02457-6>)

Hajji, Rahim and Paula Stolle. 2025. Die Resilienz von Geflüchteten in Deutschland. *Prävention und Gesundheitsförderung* 20, 463–471. (<http://doi.org/10.1007/s11553-024-01144-w>)

Haller, Liam. 2025. Are Forced Migrant Trajectories Path-Dependent? A Markov Analysis. *International Migration Review* (online first). (<http://doi.org/10.1177/01979183251319015>)

Heddesheimer, Vincent, Hanno Hilbig, and Erik Voeten. 2025. The Green Transition and Political Polarization Along Occupational Lines. *American Political Science Review*, 1–23. (<http://doi.org/10.1017/S0003055425101226>)

Hein, Simon and Tobias Kuhnimhof. 2025. Unravelling cohort effects in consumption of living space by German households. *Housing Studies* (online first), 1–27. (<http://doi.org/10.1080/02673037.2025.2473611>)

Hein, Simon and Tobias Kuhnimhof. 2025. Compensating for limited private living space through outsourcing of activities? Panel data analysis of the link between living space and spatial behaviour. *Sustainable Cities and Society* 135, 106991. (<http://doi.org/10.1016/j.scs.2025.106991>)

Heisig, Katharina and Larissa Zierow. 2025. Paid parental leave and long-term outcomes of children—Quasi-experimental evidence from former East Germany. *Labour Economics* 96, 102740. (<http://doi.org/10.1016/j.labeco.2025.102740>)

Henninger, Sandra and Rick Vogel. 2025. Sector switchers, what drives you? Exploring career shifts from private to public sector. *Public Management Review* (online first), 1–36. (<http://doi.org/10.1080/14719037.2025.2592770>)

Herbig, Lisa, Asli Unan, Theresa Kuhn, Irene Rodríguez, Toni Rodon, et al. 2025. Closed borders, closed minds? COVID-related border closures, EU support and hostility towards immigrants. *European Journal of Political Research* 64 (4), 1923–1944. (<http://doi.org/10.1111/1475-6765.70025>)

Herget, Anna and Regina T. Riphahn. 2025. Phasing out payroll tax subsidies. *International Tax and Public Finance* (online first). (<http://doi.org/10.1007/s10797-024-09879-0>)

Holz, Manuel and Jochen Mayerl. 2025. Can Differing Occupational Class Positions Explain Migrant Health Inequalities? Differences in Trajectories of Subjective Health Between Migrants and Native Germans over Time. *KZfSS Kölner Zeitschrift für Soziologie und Sozialpsychologie* 77 (1), 27–52. (<http://doi.org/10.1007/s11577-025-00985-3>)

Horn, Vincent and Tineke Fokkema. 2025. Drivers of Loneliness among Older Refugees. *Journal of Refugee Studies* 38 (1), 95–111. (<http://doi.org/10.1093/jrs/fead027>)

Hunsmann, Joanna J., Florian Weck, Julia Wendt, and Franziska Kühne. 2025. Loneliness and Distress in the Aftermath of the COVID-19 Pandemic: A Cross-Sectional Study of German University Students. *Clinical Psychology in Europe* 7 (2), 1–23. (<http://doi.org/10.32872/cpe.14365>)

I

Isaksson, Zeth. 2025. Persistent breeze from the winds of change: Partisan alignments of protest participants after democratic transition. *Electoral Studies* 98, 103000. (<http://doi.org/10.1016/j.electstud.2025.103000>)

K

Kaffai, Marius. 2025. Improving Contact Tracing by Prioritizing Influential Spreaders Identified Through Socio-Demographic Characteristics. *Journal of Artificial Societies and Social Simulation* 28 (4), 9. (<http://doi.org/10.18564/jasss.5761>)

Kanas, Agnieszka, Frank van Tubergen, and Yuliya Kosyakova. 2025. Determinants of refugees' generalised and institutional trust: evidence from Germany. *Journal of Ethnic and Migration Studies* (online first), 1-20. (<http://doi.org/10.1080/1369183X.2025.2514800>)

Kapelle, Nicole and Carla Rowold. 2025. Uncovering what matters: Family life-course aspects and personal wealth in late working age. *Demographic Research* 52 (22), 689-740. (<http://doi.org/10.4054/DemRes.2025.52.22>)

Kapelle, Nicole and Andreas P. Weiland. 2025. Intra-couple gaps in retirees' financial resources: their extent and predictors across Eastern and Western Germany. *European Societies* 27 (2), 288-319. (http://doi.org/10.1162/euso_a_00013)

Kasinger, Christop., Lisa Kriechel, Stefanie Hahm, Anna C. Reinwarth, Bernhard M. Strauss, et al. 2025. Trajectories of health-related quality of life across age cohorts: A longitudinal analysis of the German population over 16 years. *Social Science & Medicine* 366, 117718. (<http://doi.org/10.1016/j.socscimed.2025.117718>)

Kasprowski, David and Diederik Boertien. 2025. 'Escape' from Home? The Moderating Role of Sexual Orientation on the Association Between Social Origin and Educational Attainment. *European Societies* 27 (1), 144-170. (http://doi.org/10.1162/euso_a_00019)

Kaufmann, Marc, Joël Machado, and Bertrand Verheyden. 2025. Why Do Migrants Stay Unexpectedly? Misperceptions and Implications for Integration. *Journal of Mathematical Economics* 117, 103099.

Kausmann, Corinna, Niels Michalski, and Caroline Cohrdes. 2025. What factors contributed to mental well-being trajectories during the COVID-19 pandemic? A latent growth and multiple predictor analysis among German adults from 2015 to 2021. *Current Psychology*. (<http://doi.org/10.1007/s12144-025-08342-5>)

Kayıkçı, Fazıl, Daniel Meyer, Rui Alexandre Cstanho, Fatma Çoban Kayıkçı, and Sema Yılmaz. 2025. Gender and Wage Gap: Cross-Country Analysis. *Sage Open* 15 (3). (<http://doi.org/10.1177/21582440251360489>)

Kersjes, Christina, Ibrahim Demirer, Timo-Kolja Pfortner, Florian Beese, Jens Hoebel, et al. 2025. Educational differences in mental health-related quality of life during the COVID-19 pandemic in Germany: the mediating role of pandemic-induced psychosocial stress. *Frontiers in Public Health* Volume 13 - 2025. (<http://doi.org/10.3389/fpubh.2025.1535354>)

Khalil, Samir and Jasper Tjaden. 2025. How reception centers affect the integration of asylum seekers and recognized refugees. *European Societies* (online first), 1-32. (http://doi.org/10.1162/euso_a_00018)

Kleiner, Tuuli-Marja. 2025. On Good Deeds and the Reproduction of Social Inequality: An Empirical Study on Social Class and Volunteering in Germany. *Sociology* 59 (5), 943-961. (<http://doi.org/10.1177/00380385251343282>)

Klöcker, Julian Alexander, Malte Schurade, and Frank Daumann. 2025. Über sozioökonomische Einflüsse und Sportausübung von Jugendlichen. *German Journal of Exercise and Sport Research* 55, 25-38. (<http://doi.org/10.1007/s12662-024-00986-y>)

Koeppen, Luise, Dimitris Ballas, Arjen Edzes, and Sierdjan Koster. 2025. Angry together or agitated alone? The role of social capital in the geographies of discontent. *Regional Science Policy & Practice* 17 (6), 100185. (<http://doi.org/10.1016/j.rspp.2025.100185>)

Kosyakova, Yuliya and Andreas Damelang. 2025. The causal effect of liberalizing legal requirements on naturalization intentions. *Social Forces* 104 (1), 67-89. (<http://doi.org/10.1093/sf/soae170>)

Kosyakova, Yuliya, Frank van Tubergen, and Agnieszka Kanas. 2025. Determinants of Refugees' Identification with Country of Origin and Host Country and Their Naturalization Intentions: Evidence from Germany. *Journal of Immigrant & Refugee Studies*, 1–19. (<http://doi.org/10.1080/15562948.2025.2542775>)

Kratz, Fabian. 2025. Rising Educational Divides in Attitudes: How Polarization across Cohorts Can Mask Age-Related Polarization. *Sociological Science* 12, 486–510. (<http://doi.org/10.15195/v12.a21>)

Kratz, Fabian and Josef Brüderl. 2025. Assessing age trajectories (of subjective well-being): clarifying estimands, identification assumptions, and estimation strategies. *European Sociological Review* (online first). (<http://doi.org/10.1093/esr/jcaf038>)

Kriechel, Lisa, Martin Bujard, and Ansgar Hudde. 2025. The Rollercoaster of Subjective Well-Being in Times of Multiple Crises: Evidence of Five Waves of Bi-Annual Panel Data of FReDA Survey. *Social Indicators Research* 180 (3). (<http://doi.org/10.1007/s11205-025-03707-6>)

Kriechel, Lisa, Nadja Milewski, and Martin Bujard. 2025. The Affective Well-Being of Ukrainian Refugees in Germany: Evidence from Five Waves of Representative Panel Data. *Journal of Happiness Studies* 27 (1), 13. (<http://doi.org/10.1007/s10902-025-00989-y>)

Kuhn, Eroll and Rahsaan Maxwell. 2025. Asylum seekers feel more welcome in counties with more foreign-born residents. *West European Politics* 48 (1), 84–110. (<http://doi.org/10.1080/01402382.2023.2252698>)

Kühne, Marco. 2025. Take It Easy! How Flexible Work Arrangements Bust the Commuting Life Satisfaction Nexus. *Bulletin of Economic Research* (online first). (<http://doi.org/10.1111/boer.70020>)

L

Laß, Inga, Irma Mooi-Reci, Martin Bujard, and Mark Wooden. 2025. Temporary Employment and First Births: A Path Analysis of the Underlying Mechanisms Using Australian and German Panel Data. *Demography* 62 (5), 1607–1633. (<http://doi.org/10.1215/00703370-12234731>)

Lebert, Florence, Oliver Lipps, and Alessandro Di Nallo. 2025. How Perceived Job Insecurity, Voluntary Unemployment and Involuntary Job Loss Shape Couples' Life Satisfaction. *Journal of Family and Economic Issues* 46 (4), 985–1001. (<http://doi.org/10.1007/s10834-025-10062-8>)

Liu, Chia and Hill Kulu. 2025. Immigrant labor market dynamics in Germany by family status. *Demographic Research* 53 (33), 1063–1100. (<http://doi.org/10.4054/DemRes.2025.53.33>)

Loeffler, Hannah. 2025. What happens to renters? Increased financing costs and government support. *European Journal of Political Economy*, 102714. (<http://doi.org/10.1016/j.ejpoleco.2025.102714>)

Lozano Alcántara, Alberto, Laura Romeu Gordo, Heribert Engstler, and Claudia Vogel. 2025. The retirement impact on housing cost burden: are homeowners better off than tenants after retirement? *Ageing & Society* 45 (1), 1–30. (<http://doi.org/10.1017/S0144686X23000119>)

M

Maier, Eva-Maria, Almond Stöcker, Bernd Fitzenberger, and Sonja Greven. 2025. Additive density-on-scalar regression in Bayes Hilbert spaces with an application to gender economics. *The Annals of Applied Statistics* 19 (1), 680–700. (<http://doi.org/10.1214/24-AOAS1979>)

Mendola, Daria and Annalisa Busetta. 2025. Resilience and discrimination: unravelling the multifaceted nature of refugee health in Germany. *Genus* 81 (1), 15. (<http://doi.org/10.1186/s41118-025-00252-5>)

Menold, Natalja. 2025. Effect of Cognitive Pretests on Measurement Invariance and Reliability in Quality of Life Measures: An Evaluation in Refugee Studies. *Social Indicators Research* 179 (1), 527–548. (<http://doi.org/10.1007/s11205-025-03622-w>)

Meyer, Franziska. 2025. Refugee Women's Transition to VET in Germany: Examining the Role of Gender Norms and Human Capital Endowments. *Social Inclusion* 13. (<http://doi.org/10.17645/si.9559>)

Meyer, Franziska. 2025. Integrating young refugees into VET: do German active labor market programs make a difference? *Zeitschrift für Erziehungswissenschaft* (online first). (<http://doi.org/10.1007/s11618-025-01293-4>)

Mikolai, Júlia, Hill Kulu, Isaure Delaporte, and Chia Liu. 2025. Origin, Generation, and Destination Country Context: Employment Changes and Childbearing Among Female Immigrants and Their Descendants in the UK, France, and Germany. *European Journal of Population* 41 (1), 26. (<http://doi.org/10.1007/s10680-025-09750-w>)

Mikolai, Júlia, Hill Kulu, Michael J. Thomas, and Sergi Vidal. 2025. Time Since Separation, Repartnering, and Homeownership in England and Wales, and Germany. *Population, Space and Place* 31 (6). (<http://doi.org/10.1002/psp.70073>)

Mikucka, Małgorzata, Oliver Arránz Becker, and Christof Worl. 2025. Short- and long-term health effects of job insecurity. Fixed effects panel analysis of German data. *Scandinavian Journal of Work, Environment & Health* 51 (2), 68-76. (<http://doi.org/10.5271/sjweh.4206>)

Monsees, Daniel and Hendrik Schmitz. 2025. The Effect of Compulsory Schooling on Vaccination Against COVID. *Health Economics* (online first). (<http://doi.org/10.1002/hec.4929>)

N

Neumann, Uwe and Christoph M. Schmidt. 2025. The dynamics of household location preferences in Germany. *Papers in Regional Science* 104 (6). (<http://doi.org/10.1016/j.pirs.2025.100121>)

Nika, David. 2025. Social inequalities at the transition to higher education: the role of personality for graduates from vocational and general schools. *Empirical Research in Vocational Education and Training* 17 (1), 7. (<http://doi.org/10.1186/s40461-025-00181-9>)

O

Oparina, Ekaterina, Caspar Kaiser, Niccolò Gentile, Alexandre Tkatchenko, Andrew E. Clark, et al. 2025. Machine learning in the prediction of human wellbeing. *Scientific Reports* 15 (1), 1632. (<http://doi.org/10.1038/s41598-024-84137-1>)

P

Pacei, Silvia, Silvia De Nicolò, and Maria Rosaria Ferrante. 2025. The Measurement of Economic Resilience: A Proposal. *Social Indicators Research*. (<http://doi.org/10.1007/s11205-025-03700-z>)

Pagan, Ricardo. 2025. Personality traits and participation in holiday trips for people without and with moderate and severe disabilities. *Current Issues in Tourism* 28 (22), 3636-3660. (<http://doi.org/10.1080/13683500.2024.2403132>)

Peters, Steffen, Erich Striessnig, Alessandra Trimarchi, Maria Rita Testa, and Natalie Nitsche. 2025. Too worried about the environment to have children? Or more worried about the environment after having children? *Population and Environment* 47 (3), 31. (<http://doi.org/10.1007/s11111-025-00501-x>)

Poier, Stefan, Anna Maria Nikodemska-Wołowik, and Michał Suchanek. 2025. Should I buy or should I go? The effect of the big five personality traits and satisfaction with life on E-bike ownership in Germany. *Transport Policy* 162, 188-199. (<http://doi.org/10.1016/j.tranpol.2024.12.004>)

R

Radoš, Sonja, Maria K. Pavlova, Klaus Rothermund, and Rainer K. Silbereisen. 2025. Household members' positive personality traits and age stereotypes do not predict perceived expectations for active aging. *European Journal of Ageing* 22 (1), 11. (<http://doi.org/10.1007/s10433-025-00850-4>)

Rähse, Tobias, Matthias Richter, and Anja Knöchelmann. 2025. Continuing exposure to disadvantageous material and perceived economic factors on self-rated health in different life stages: fixed effects analyses with data from the German Socioeconomic Panel. *BMC Public Health* 25 (1), 446. (<http://doi.org/10.1186/s12889-024-21135-y>)

Ramos, Vincent Jerald, Michaela Kreyenfeld, Enrique Alonso-Perez, Paul Gellert, Jan Paul Heisig, et al. 2025. Future Caregiving Responsibilities, Employment Uncertainties, and Expected Childbearing Behavior: Survey Experimental Evidence from Germany. *Population Research and Policy Review* 44 (5), 48. (<http://doi.org/10.1007/s11113-025-09969-9>)

Rapp, Severin. 2025. Economies of Scale for Household Wealth: An Analysis of Equivalence Scales. *Review of Income and Wealth* 71 (1), e70002. (<http://doi.org/10.1111/roiw.70002>)

Rebaudo, Mara. 2025. Response Bias in the Gender Gap in Non-Market Work. *German Economic Review* (online first). (<http://doi.org/10.1515/ger-2025-0023>)

Rebaudo, Mara, Lena Calahorrano, and Kathrin Hausmann. 2025. Willingness to Care-Financial Incentives and Caregiving Decisions. *Health Economics* 34 (3), 442-455. (<http://doi.org/10.1002/hec.4918>)

Rickmeier, Katrin. 2025. Mobility after job loss in Germany: the effects of regional economic opportunities and economic worries on mobility intentions and behaviour. *Review of Regional Research* (online first). (<http://doi.org/10.1007/s10037-025-00232-4>)

Runst, Petrik and Jörg Thomä. 2025. Personality Traits and the Likelihood of Self-Employment: A Journey into the Crafts' Way of Doing Business. *German Economic Review* (online first). (<http://doi.org/10.1515/ger-2024-0033>)

Rüttenauer, Tobias, Felix Bader, Ingmar Ehler, and Henning Best. 2025. Breathing unequal air: environmental disadvantage and residential sorting of immigrant minorities in England and Germany. *Social Forces* (online first). (<http://doi.org/10.1093/sf/soaf032>)

S

Sabet, Navid, Marius Liebald, and Guido Friebel. 2025. Terrorism and Voting: The Rise of Right-Wing Populism in Germany. *American Economic Journal: Economic Policy* 17 (3), 407-40. (<http://doi.org/10.1257/pol.20230615>)

Sauerwein, Markus N. and Gunther Graßhoff. 2025. Trend Effects of Being in Care, from Early to Late Adulthood: A Comparative Look at Adults Who Were in Residential or Foster Care As Children and Those Who Did Not Experience Out-Of-Home Care. *Residential Treatment For Children & Youth* 42 (2), 235-259. (<http://doi.org/10.1080/0886571X.2024.2333757>)

Sauzet, Odile and Maria Schäfer. 2025. Interaction effects on health between perceived neighbourhood social cohesion and demographic changes: a longitudinal study. *Journal of Epidemiology and Population Health* 73 (6), 203154. (<http://doi.org/10.1016/j.jep.2025.203154>)

Schaefer, Bernd, Peter Haehner, and Maïke Luhmann. 2025. Network Dynamics in Subjective Well-being and Their Differences Across Age Groups. *Journal of Personality and Social Psychology* 128 (3), 700-721. (<http://doi.org/10.1037/pspp0000533>)

Schimohr, Katja, Eva Heinen, Petter Næss, and Joachim Scheiner. 2025. Changes in mode use after residential relocation: Attitudes and the built environment. *Transportation Research Part D: Transport and Environment* 139, 104556. (<http://doi.org/10.1016/j.trd.2024.104556>)

Schmidt, Torben Dall, Wenzel Matiaske, and Martina Maas. 2025. Telework and establishment location: employee influence and regional heterogeneity. *Regional Studies* 59 (1). (<http://doi.org/10.1080/00343404.2025.2570010>)

Sperlich, Stefanie, Batoul Safieddine, and Johannes Beller. 2025. Better health, but growing social and health inequalities among young adults in Germany due to educational expansion? A counterfactual mediation analysis. *Social Science & Medicine* 385, 118604. (<http://doi.org/10.1016/j.socscimed.2025.118604>)

Spörlein, Christoph, Gundula Zoch, and Elmar Schlueter. 2025. Did social change strengthen genetic associations? Gendered educational attainment before and after German reunification. *Research in Social Stratification and Mobility* 99. (<http://doi.org/10.1016/j.rssm.2025.101091>)

Stöcker, Anna-Katharina, Iris Katharina Gauglitz, and Astrid Schütz. 2025. Managers' Traditional Gender Role Attitudes. *Journal of Personnel Psychology* 24 (1), 2-11. (<http://doi.org/10.1027/1866-5888/a000348>)

Stumpf, Elisa and Silke Uebelmesser. 2025. Preferences for wealth redistribution: The role of social background and merit. *European Journal of Political Economy* 90, 102770. (<http://doi.org/10.1016/j.ejpoleco.2025.102770>)

U

Ullein, Ann-Marie and Jörg Welker. 2025. Migrant selectivity in risk orientation and language proficiency: A comparative study of recent refugees and other immigrants in Germany. *International Journal of Comparative Sociology* 0 (0). (<http://doi.org/10.1177/00207152251368245>)

V

Valentim, António, Heike Klüver, and Cornelius Erfort. 2025. How nuclear power hurts the Greens: Evidence from German nuclear power plants. *Electoral Studies* 96, 102959. (<http://doi.org/10.1016/j.electstud.2025.102959>)

Vogel, Lars. 2025. Ende zweier Ungleichheiten? Die Aufstiegschancen von Ostdeutschen und die Notwendigkeit zur Unterscheidung von Eliten- und Führungspositionen. *Zeitschrift für Soziologie* 54 (2), 224-237. (<http://doi.org/10.1515/zfsoz-2025-2014>)

W

Wiedner, Jonas and Merlin Schaeffer. 2025. Spatial overlap: trade-offs in refugees' residential choices. *Journal of Ethnic and Migration Studies* 51 (5), 1075-1097. (<http://doi.org/10.1080/1369183X.2024.2425213>)

Wrzus, Cornelia, Yannick Roos, Michael D. Krämer, Ramona Schoedel, Mitja D. Back, et al. 2025. Affiliation motive and social interactions in people's daily life: A temporal processes approach using ecological momentary assessment and mobile sensing. *Journal of Personality and Social Psychology* 129 (2), 341-362. (<http://doi.org/10.1037/pspp0000555>)

Wu, Qiao, Marta Bosanac, Maxim N. Shokhirev, and Laurel Raffington. 2025. Probing buccal-customized epigenetic clocks to investigate socioeconomic and health disparities. *GeroScience* (online first). (<http://doi.org/10.1007/s11357-025-01907-z>)

Yastrebov, Gordey, Alexander Trinidad, and Thomas Leopold. 2025. A Bounding Approach to Age-Period-Cohort Analysis: A Demonstration Using Public Crime Concerns in Germany. *Journal of Quantitative Criminology*. (<http://doi.org/10.1007/s10940-025-09633-7>)

Z

Zoch, Gundula and Nicole Kapelle. 2025. From parenthood to planet care? The evolution of environmental and climate concerns during family formation. *Population and Environment* 47 (2), 23. (<http://doi.org/10.1007/s11111-025-00490-x>)

OTHER PUBLICATIONS

SOEP-Based Articles in DIW Weekly Reports



5 – Einsamkeit in Deutschland: die gefährdetste Gruppe sind Menschen mit niedrigem Einkommen

(5/6 – Loneliness in Germany: Low-Income Earners at Highest Risk of Loneliness)

Theresa Entringer, Linda Kumrow, Barbara Stacherl



6 – Mehr Klarheit schaffen: Klimageld als sozialer Ausgleich bei höheren CO₂-Preisen

(Creating more clarity: Climate money as social compensation for higher CO₂ prices)

Sandra Bohmann, Lars Felder, Peter Haan, Claudia Kemfert, Merve Küçük, Laura Schmitz, Jürgen Schupp



8 – Einkommensverteilung: Anzeichen für Trendbruch beim Armutsrisiko – Alleinerziehende seltener von Armut bedroht

(5/6 – Income Distribution: Signs of a Trend Reversal In the Poverty Risk; Single Parents Less Frequently at Risk of Poverty)

Markus M. Grabka



14 – Sprach- und Mathekompetenzen hängen in Deutschland bei Schulstart stärker von sozialer Herkunft ab als in anderen Ländern

(In Germany, language and math skills at the start of school depend more on social background than in other countries)

Jascha Dräger, Thorsten Schneider



15 – Pilotprojekt Grundeinkommen: kein Rückzug vom Arbeitsmarkt, aber bessere mentale Gesundheit

(Basic income pilot project: no withdrawal from the labor market, but better mental health)

Sandra Bohmann, Susann Fiedler, Max Kasy, Jürgen Schupp, Frederik Schwerter



34 – Beispiel England zeigt: Jeder Fehltag in der Schule geht mit schlechteren Abschlussnoten einher

(The example of England shows that every day of absence from school is associated with poorer final grades)

Jascha Dräger, Markus Klein, Edward Sosu



35 – Zehn Jahre in Deutschland: Wandel des Willkommensgefühls, Einbürgerungen Geflüchteter und Gesundheit der in Deutschland geborenen Kinder: Editorial

(Ten years in Germany: Changes in the welcoming atmosphere, naturalization of refugees, and health of children born in Germany: Editorial)

Cornelia Kristen, Christian Hunkler, Sabine Zinn

**35 – Willkommensgefühl bröckelt: Geflüchtete nehmen Diskriminierung am Arbeits- und Wohnungsmarkt wahr**

(34/35 – Refugees Are Feeling Increasingly Unwelcome and Perceiving Discrimination in the Labor and Housing Markets)

Philippa Cumming, Ellen Heidinger

**35 – Geflüchtete wollen langfristig bleiben und Deutsche werden**

(37 – Refugees Want to Stay in Germany Long Term and Become German Citizens)

Jörg Hartmann

**35 – Lebensverhältnisse der Mütter prägen Gesundheit und frühkindliche Entwicklung – Fluchterfahrung spielt kaum eine Rolle**

(47/48 – Mothers' Living Conditions Shape Health and Early Development, While Refugee Experience Has Little Impact)

Valeriia Heidemann, Sabine Zinn

**38/39 – Narrative zur Verteilungswirkung von Klimapolitik können Populismus stärken**

(38/39 – Narratives on the Distributional Impact of Climate Policy Can Fuel Populism)

Matilda Gettins, Lorenz Meister

**42 – Armutsrisiko stagniert, ist aber bei Menschen mit Migrationshintergrund und Erwerbslosen weiterhin hoch**

(Poverty risk stagnates, but remains high among people with a migrant background and the unemployed)

Markus M. Grabka

**44 – Einfluss der Eltern auf das Wohneigentum der Kinder ist immer noch hoch, geht aber zurück**

(44 – Parental Influence on Their Children's Homeownership Remains High, but Declining)

Philipp M. Lersch, Selçuk Bedük, Enrico Benassi

**45 – Einstellungen zu Geschlechterrollen werden bei Jüngeren in manchen Ländern wieder traditioneller**

(45/46 – Traditional Attitudes Toward Gender Roles Are Increasing Among Young People in Some Countries)

Lukas Menkhoff, Katharina Wrohlich

DIW aktuell

**105 – Deutschland braucht eine nachhaltige und effektive Migrations- und Integrationspolitik**

(Germany Needs a Sustainable and Effective Migration and Integration Policy)

Marcel Fratzscher, Sabine Zinn

SOEPpapers

http://www.diw.de/soeppapers_en

1217

Eliana Coschignano, Robin Jessen

The Diverging Trends of Male and Female Bottom Earnings in Germany

1218

Mandy Müller

Validität und Reliabilität der ein- und zweistufigen Version des Effort-Reward Imbalance Modells in der 33. Welle des Sozio-oekonomischen Panels

1219

Ayhan Adams, Katrin Golsch

Child sick care-related absence from work and the consequences on parents' income

1220

Christina Siegert

The interplay of poverty and employment trajectories in couples around the transition to parenthood in Germany

1221

Katharina Adler, Fabian Kosse, Markus Nagler, Johannes Rincke

Earnings Expectations of "First-in Family" University Students and Their Role for Major Choice

1222

Fabian Kosse, Tim Leffler, Arna Woemmel

Digital Skills: Social Disparities and the Impact of Early Mentoring

1223

Adriana Rocío Cardozo Silva, Christopher Prömel

Feeling Equal before the Law? The Impact of Access to Citizenship and Legal Status on Perceived Discrimination

1224

Sachintha Fernando, Katharina Kolb, Christoph Wunder

Rising waters, falling well-being: The effects of the 2013 East German flood on subjective well-being

1225

Renate Lorenz

A changing ethnic landscape? The effect of refugee immigration on inter-ethnic group relations and identities of previous immigrants

1226

Alexander Eriksson Byström, María Sól Antonsdóttir

Thanks, but No Thanks: A Microsimulation of BAFöG Eligibility and Non-Take-Up

1227

Stefan Bach, Charlotte Bartels, Theresa Neef

The Distribution of National Income in Germany, 1992–2019

1228

Helena Manger

Benefits and Employees' Work Effort: An Empirical Analysis of Non-monetary Incentives

1229

Alan Piper

Narcissism and wellbeing in midlife and beyond

1230

Daniel Graeber, Lorenz Meister, Carsten Schröder, Sabine Zinn

Random Forests for Labor Market Analysis: Balancing Precision and Interpretability

1231

Alyna Paul

Refugees (un)welcome – Regional demographic changes and individual attitudes towards refugees

1232

Alexander Lepe, Ingo Kolodziej, Sabine Zinn

Pandemic-Ready Data: Linking the Socio-Economic Panel with Administrative Health Records

1233

Stefan Schneck

The origins of entrepreneurship: How parental role models and socialization shape later entrepreneurial intentions

1234

Melanie Borah, Susanne Elsas

Endogeneity of household size and income in the estimation of equivalence scales from satisfaction data

1235

Kausik Chaudhuri, Alan Piper

Order out of chaos: A specification curve analysis of age and wellbeing

The full texts of the SOEPpapers can be downloaded free of charge from the publication database EconStor:
www.econstor.eu/handle/10419/56390

SOEP Survey Papers

http://www.diw.de/soepsurveypapers_en

Series A

Survey Instruments

1417

SOEP-Core – 2021: Establishment Survey of Employers (SOEP-LEE2, with Reference to Variables)

1418

SOEP-Core – 2020: Selbstständige (mit Verweis auf Variablen)

1419

SOEP-Core – 2020: Self-employed Persons (with Reference to Variables)

1428

SOEP-Core – 2022: CAMCES

1433

SOEP-Core – 2022: Haushaltsfragebogen, Stichproben A–R+IAB-SOEP-M1–M8b

1434

SOEP-Core – 2022: Personenfragebogen, Stichproben A–R+IAB-SOEP-M1–M8b

1435

SOEP-Core – 2022: Lebenslauffragebogen, Stichproben A–R+IAB-SOEP-M1–M8b

1436

SOEP-Core – 2022: Die verstorbene Person, Stichproben A–R+IAB-SOEP-M1–M8b

1437

SOEP-Core – 2022: Kurzfragebogen Personen, Stichproben A–R+IAB-SOEP-M1–M8b

1438

SOEP-Core – 2022: Haushaltszusammensetzung (PAPI, Stichproben A–R+IAB-SOEP-M1–M8b)

1439

SOEP-Core – 2022: Household (A–R+IAB-SOEP-M1–M8b)

1440

SOEP-Core – 2022: Individual (A–R+IAB-SOEP-M1–M8b)

1441

SOEP-Core – 2022: Biography (A–R+IAB-SOEP-M1–M8b)

1442

SOEP-Core – 2022: The Deceased Person (A–R+IAB-SOEP-M1–M8b)

1443

SOEP-Core – 2022: Catch-up Individual (A–R+IAB-SOEP-M1–M8b)

1444

SOEP-Core – 2023: Haushaltsfragebogen, Stichproben A–R+IAB-SOEP-M1–M8c

1445

SOEP-Core – 2023: Personenfragebogen, Stichproben A–R+IAB-SOEP-M1–M8c

1446

SOEP-Core – 2023: Lebenslauffragebogen, Stichproben A–R+IAB-SOEP-M1–M8c

1447

SOEP-Core – 2023: Die verstorbene Person, Stichproben A–R+IAB-SOEP-M1–M8c

1448

SOEP-Core – 2023: Haushaltszusammensetzung (PAPI, Stichproben A–R+IAB-SOEP-M1–M8c)

1449

SOEP-Core – 2023: Household (A–R+IAB-SOEP-M1–M8c)

1450

SOEP-Core – 2023: Individual
(A-R+IAB-SOEP-M1-M8c)

1451

SOEP-Core – 2023: Biography
(A-R+IAB-SOEP-M1-M8c)

1452

SOEP-Core – 2023: The Deceased Person
(A-R+IAB-SOEP-M1-M8c)

1453

SOEP-Core – 2023: Catch-up Individual
(A-R+IAB-SOEP-M1-M8c)

1463

SOEP-Core – 2023: Kurzfragebogen Personen,
Stichproben A-R+IAB-SOEP-M1-M8c

1464

SOEP-IS 2023 – Fragebogen für die SOEP-
Innovations-Stichprobe

1465

SOEP-IS 2023 – Questionnaire for the SOEP
Innovation Sample

1499

SOEP-Core – 2023: Household
(techn., with Reference to Variables)

1500

SOEP-Core – 2023: Household
(PAPI, with Reference to Variables)

1501

SOEP-Core – 2023: Catch-up Individual
(techn., with Reference to Variables)

1502

SOEP-Core – 2023: Catch-up Individual
(PAPI, with Reference to Variables)

1503

SOEP-Core – 2023: Deceased Individual
(techn., with Reference to Variables)

1504

SOEP-Core – 2023: Deceased Individual
(PAPI, with Reference to Variables)

1505

SOEP-Core – 2023: Youth
(12-17-year-olds, with Reference to Variables)

1506

SOEP-Core – 2023: Childhood
(0-11-year-olds, with Reference to Variables)

1507

SOEP-Core – 2023: Grip Strength
(with Reference to Variables)

1508

SOEP-Core – 2023: Context Questions About
the Interview (with Reference to Variables)

1509

SOEP-Core – 2023: Residential Environment
(with Reference to Variables)

1510

SOEP-Core – 2023: Haushalt
(techn., mit Verweis auf Variablen)

1511

SOEP-Core – 2023: Haushalt
(PAPI, mit Verweis auf Variablen)

1512

SOEP-Core – 2023: Nachbefragung Person
(techn., mit Verweis auf Variablen)

1513

SOEP-Core – 2023: Verstorbene Person
(techn., mit Verweis auf Variablen)

1514

SOEP-Core – 2023: Verstorbene Person
(PAPI, mit Verweis auf Variablen)

1515

SOEP-Core – 2023: Jugend
(12-17 Jahre, mit Verweis auf Variablen)

1516

SOEP-Core – 2023: Kindheit
(0-11 Jahre, mit Verweis auf Variablen)

1517

SOEP-Core – 2023: Greifkraft
(mit Verweis auf Variablen)

1518

SOEP-Core – 2023: Kontextfragen
zum Interview (mit Verweis auf Variablen)

1519

SOEP-Core – 2023: Wohnumfeld
(mit Verweis auf Variablen)

1520

SOEP-Core – 2023: Nachbefragung Person
(PAPI, mit Verweis auf Variablen)

1521

SOEP-Core – 2023: Household
(IAB-BAMF-SOEP, M3-M6/M9,
with Reference to Variables)

1522

SOEP-Core – 2023: Haushalt
(IAB-BAMF-SOEP, M3-M6/M9,
mit Verweis auf Variablen)

1523

SOEP-Core – 2023: Person
(IAB-BAMF-SOEP, M3-M6/M9,
mit Verweis auf Variablen)

1524

SOEP-Core – 2023: Individual
(IAB-BAMF-SOEP, M3-M6/M9,
with Reference to Variables)

1525

SOEP-Core – 2023: Person
(techn., mit Verweis auf Variablen)

1526

SOEP-Core – 2023: Individual
(techn., with Reference to Variables)

1527

SOEP-Core – 2023: Person
(PAPI, mit Verweis auf Variablen)

1528

SOEP-Core – 2023: Individual
(PAPI, with Reference to Variables)

1529

SOEP-Core – 2023: Biografie
(IAB-BAMF-SOEP, M3-M6/M9,
mit Verweis auf Variablen)

1530

SOEP-Core – 2023: Biography
(IAB-BAMF-SOEP, M3-M6/M9,
with Reference to Variables)

1531

SOEP-Core – 2023: Biografie
(techn., mit Verweis auf Variablen)

1532

SOEP-Core – 2023: Biography
(techn., with Reference to Variables)

1533

SOEP-Core – 2023: Biografie
(PAPI, mit Verweis auf Variablen)

1534

SOEP-Core – 2023: Biography
(PAPI, with Reference to Variables)

Series B

Survey Reports

1420

Technical Report on the 2022
IAB-BiB/FReDA-BAMF-SOEP Survey –
"Ukrainian Refugees in Germany"
(Wave 1)

1421

Methodenbericht zum Befragungsjahr
2022 (Welle 1) der IAB-BiB/FReDA-BAMF-
SOEP-Befragung „Geflüchtete aus der Ukraine
in Deutschland“

1422

Methodenbericht zum Befragungsjahr
2023 (Welle 2) der IAB-BiB/FReDA-BAMF-
SOEP-Befragung „Geflüchtete aus der Ukraine
in Deutschland“

1494

SOEP-Core – 2022:
Report of Survey Methodology and Fieldwork

1495

SOEP-Core – 2023:
Report of Survey Methodology and Fieldwork

1498

SOEP-Core – 2024:
Report of Survey Methodology and Fieldwork

Series C

Data Documentations

1423

SOEP-LEE2-Compare: Anonymisierungskonzept
für die Onsite Edition und den Scientific Use
File zur Studie „Betriebe und berufliche
Arbeitswelten in Deutschland“

1496

SOEP-Core – 2022: Sampling, Nonresponse,
and Weighting in Sample R

1497

IAB-SOEP-Migration – 2022: Sampling,
Nonresponse, and Weighting in Sample M8b

1536

IAB-SOEP-Migration – 2023: Sampling,
Nonresponse, and Weighting of the Sample M8c

1537

IAB-BAMF-SOEP Survey of Refugees – 2023:
Sampling, Nonresponse, and Weighting
of the Sample M9

Series D

Variable Descriptions and Coding

1471

SOEP-IS 2023 – FGZ: FGZ Exclusive Variables

1472

SOEP-IS 2023 – HBRUTTO:
Household-Related Gross File

1473

SOEP-IS 2023 – HGEN: Household-Related
Status and Generated Variables

1474

SOEP-IS 2023 – HL: Variables from the
Household Question Module

1475

SOEP-IS 2023 – HPATH:
Household-Related Meta-Dataset

1476

SOEP-IS 2023 – HPATHL: Household-Related
Meta-Dataset (Long)

1477

SOEP-IS 2023 – IBIP_PARENT: Variables from
Bonn Intervention Panel (Parents)

1478

SOEP-IS 2023 – IBIP_PUPIL: Variables from
Bonn Intervention Panel (Children)

1479

SOEP-IS 2023 – IDRМ: Person-Related Data
from Innovative DRM Module

1480

SOEP-IS 2023 – IDRМ_ESM: Person-Related
DRM Data from Innovative ESM Module

1481

SOEP-IS 2023 – IESM: Person-Related ESM
Data from Innovative ESM Module

1482

SOEP-IS 2023 – ILANGUAGE: Variables from
Innovative Language Modules

1483

SOEP-IS 2023 – ILOTTERY: Variables from an
Innovative Lottery Experiment in 2016

1484

SOEP-IS 2023 – INNO: Variables from the
Innovation Modules

1485

SOEP-IS 2023 – INNO_H: Household-Variables
from the Innovation Modules

1486

SOEP-IS 2023 – INTERVIEWER:
Variables about the Interviewers

1487

SOEP-IS 2023 – IRISK: Decision from Description
vs. Decision from Experience

1488

SOEP-IS 2023 – KIDLONG: Pooled Dataset
on Children

1489

SOEP-IS 2023 – PBRUTTO: Person-Related
Gross File

1490

SOEP-IS 2023 – PGEN: Person-Related Status
and Generated Variables

1491

SOEP-IS 2023 – PL: Variables from the
Individual Question Module

1492

SOEP-IS 2023 – PPATH:
Person-Related Meta-Dataset

1493

SOEP-IS 2023 – PPATHL:
Person-Related Meta-Dataset (Long)

1535

SOEP-Core v40 – Activity Biography
in the Datasets "pbiospe" and "artkalen"

1538

SOEP-Core v40.1 – Codebook for the \$PEQUIV (SOEP-CNEF) File 1984-2023: CNEF Variables with Extended Income Information for the SOEP

1539

SOEP-Core v40.1 – INTERVIEWER

1540

SOEP-Core v40.1 – HBRUTTO: Household-Related Gross File

1541

SOEP-Core v40.1 – PBRUTTO: Person-Related Gross File

1542

SOEP-Core v40.1 – HEALTH

1543

SOEP-Core v40.1 – SELFEMPL: Self-Employed Survey Data

1544

SOEP-Core v40.1 – BIOBIRTH: Biological Parent/Child Connections

1545

SOEP-Core v40.1 – BIOIMMIG: Generated Information on Immigration History

1546

SOEP-Core v40.1 – PPATHL: Person-Related Meta-Dataset

1547

SOEP-Core v40.1 – PGEN: Person-Related Status and Generated Variables

1548

SOEP-Core v40.1 – HGEN: Household-Related Status and Generated Variables

1549

SOEP-Core v40.1 – BIOPAREN: Biography Information on the Parents

1550

SOEP-Core v40.1 – BIOREGION

1551

SOEP-Core v40.1 – HPATHL: Household-Related Meta-Dataset

The full texts of the SOEP Survey Papers can be downloaded free of charge from the publication database EconStor:
www.econstor.eu/handle/10419/61517

THIRD-PARTY FUNDED PROJECTS

Find all project descriptions in more detail listed on our website ([Research Projects](#)).

FOCUS:

SOCIAL INEQUALITIES AND DISTRIBUTION

- Basic Income Pilot Project
- DECIPHE – Demographic Change and the Intergenerational Persistence in Homeownership in Europe (three project parts)
- Inequality, Taxation and Redistribution: Insights from a German/French Perspective (EQUITAX)
- Groups put at Particular Risk by COVID 19 (GaPRisk) – two project parts
- The intergenerational reproduction of wealth inequality and its socio-demographic conditions in Germany (InterVerm)
- Perceptions of Inequalities and Justice in Europe (PIJE)
- German Social Cohesion Panel (SCP) of the Research Institute for Social Cohesion (RISC)
- Studying Regional Development Dynamics and their Political Consequences: SOEP RegioHub 1+2 at Bielefeld University
- Wealth-Holders at the Top (WATT): An Interdisciplinary Research Network
- WEALTHTRAJECT: Understanding Trajectories of Wealth Accumulation and Their Variability
- Wealthy, Wealthier, Wealthiest – The role of inherited wealth for wealth inequality in Germany

FOCUS:

SUBJECTIVE WELL-BEING, PERSONALITY, AND HEALTH

- GDR-Past and Mental Health: Risk and Protection Factors (DDR-PSYCH)
- The economic and social impact of COVID-19 mitigation policies: A cross-country analysis of macro events
- Pandemic Preparedness: One Health, One Future (Leibniz Lab)
- Populism and Narratives of Social Mobility
- Vaccine hesitancy: Exploring the role of temporal and cross-country variation in COVID

FOCUS:

MIGRATION AND INTEGRATION

- IAB-BAMF-SOEP Survey of Refugees in Germany
- IAB-SOEP Migration Sample
- Longitudinal Aspects of the Interaction between Health and Integration of Refugees in Germany (LARGE)
- Longitudinal Study of Ukrainian Refugees in Germany (SUARE)

FOCUS:

SURVEY METHODOLOGY AND DATA SCIENCE

- Bremen Initiative to Foster Early Childhood Development (BRIFE)
- Video-interviewing as part of a targeted multi-mode design in household panel surveys (CALVI)
- ENTAILab – Research Infrastructure and Innovation Lab
- KonsortSWD I+II
- Lab² Incubator for Collaborative and Transparent Economic Sciences
- Simulation of educational trajectories, taking latent decision-making processes into account – in the framework of the research group “Multi-sectoral Regional Microsimulation Model” (MikroSim)
- The Linked Employer-Employee Study of the Socio-Economic Panel, Vers. 2 (SOEP-LEE2)
- Expansion of the social and spatial research data infrastructure SoRa: FAIR, intelligent, integrative (SoRa+)
- Surveying Panel Participants’ Network Members: Integration of Egocentric Data Collection and Respondent-Driven Sampling

EXPERT REPORTS AND APPOINTMENTS

EXPERT REPORTS

Adriana Cardozo Silva

- Deutsches Zentrum für Altersfragen (DZA). Geschäftsstelle für die Altersberichte der Bundesregierung: Expertise on "Aging in Germany—Potential and Opportunities for Participation. Aging Processes in the Context of Migration"

Philipp M. Lersch

- 10. Familienbericht der Bundesregierung: Expertise on "Assets in divorce, separation, and single parenthood"

Rebecca Olthaus

- Minimum Wage Commission: Study on the "Effects of the statutory minimum wage on employment and unemployment"

Sabine Zinn

- Datenreport zum Berufsbildungsbericht 2025 on "Migration in Deutschland: Entwicklungen und gegenwärtige Herausforderungen"

APPOINTMENTS

Markus M. Grabka

- Deutscher Verein für öffentliche und private Fürsorge, member of the "Hauptausschuss"

Mariel McKone Leonard

- European Social Survey Research Ethics Board, deputy chair

Levent Neyse

- London School of Economics and Political Science in the Department of Psychology and Behavioral Sciences, long-term visiting fellow

LIST OF ABBREVIATIONS AND ACRONYMS

BAGSS	Bamberg Graduate School of Social Sciences
BAMF	Federal Office for Migration and Refugees
BAMF-FZ	Research Center of the Federal Office for Migration and Refugees
BMAS	Federal Ministry of Labour and Social Affairs
BMFTR	Federal Ministry of Research, Technology and Space
BGHS	Bielefeld Graduate School in History and Sociology
BGSS	Berlin Graduate School of Social Sciences
bpb	Federal Agency for Civic Education
BRISE	Bremen Initiative to Foster Early Childhood Development
BSoE	Berlin School of Economics
DrPH	Doctoral Program for Public Health of the Faculty of Health Sciences at Bielefeld University
CALVI	Computer-Assisted Live Video Interviewing
CAPI	Computer-Assisted Personal Interview
CASI	Computer-Assisted Self-administered Interview
CATI	Computer-Assisted Telephone Interview
CAWI	Computer-Assisted Web Interview
CNEF	Cross-National Equivalent File
Covid-19	Coronavirus disease 2019/SARS-2
DDR-Psych	GDR past and mental health: risk and protective factors
DECIPHE	Demographic Change and the Intergenerational Persistence in Homeownership in Europe
Destatis	Federal Statistical Office of Germany
DFG	German Research Foundation
DGOF	German Society for Online Research
DIPS	Dynamic interactions between personality traits and social relationships: Short- and medium-term processes in everyday life, including other individual characteristics and factors of the social context
DIW Berlin	German Institute for Economic Research
DIW GC	DIW Graduate Center
DMHM	Dynamics of Mental Health of Migrants
ENTAILab	Research Infrastructure and Innovation Lab
EQUITAX	Inequality, Taxation and Redistribution: Insights from a German/French Perspective
ERC	European Research Council
EU	European Union
FAIR	Findable, Accessible, Interoperable, Reusable

FU Berlin	Freie Universität Berlin
GaPRisk	Groups put at Particular Risk by COVID-19
GDR	German Democratic Republic
GESIS	Leibniz Institute for the Social Sciences
IAB	Institute for Employment Research
infas	infas Institute for Applied Social Science GmbH
InfSPP	Infrastructure Priority Program
InterVerm	The intergenerational reproduction of wealth inequality and its socio-demographic conditions in Germany
IOER/ IÖR	The Leibniz Institute of Ecological Urban and Regional Development
KonsortSWD	Consortium for the Social, Behavioural, Educational and Economic Sciences in the National Research Data Infrastructure (NFDI)
LARGE	Longitudinal Aspects of the Interaction between Health and Integration of Refugees in Germany
LifBi	The Leibniz Institute for Educational Trajectories
LIFE	International Max Planck Research School on the Life Course
LINDY	Life-course Income Dynamics
LIS	Luxembourg Income Study
LWS	Luxembourg Wealth Study
MikroSim	Project within the research group "Multi-sectoral Regional Microsimulation Model"
NEPS	National Educational Panel Study
PAPI	Paper-and-Pencil Interview
Ph.D.	Doctor of Philosophy
PIJE	Perceptions of Inequalities and Justice in Europe
RatSWD	German Data Forum
RDC	Research Data Center
RDS	Respondent-Driven Sampling
RISC	Research Institute for Social Cohesion
RKI-SOEP-2	Second Nationwide Antibody Study "Living in Germany – Corona Monitoring"
SCP	Social Cohesion Panel
SOEP	Socio-Economic Panel
SOEP-IS	SOEP Innovation Sample
SOEP-LEE2	The Linked Employer-Employee Study of the Socio-Economic Panel, Vers. 2
SOEP RegioHub	Leibniz ScienceCampus SOEP RegioHub at Bielefeld University
SOEP-RS	SOEP Related Studies
SOEP-XC	SOEP Cross Countries
SORA+	Expansion of the Social-Spatial Science Research Data Infrastructure (SoRa): FAIR, intelligent, integrative
SUARE	Longitudinal Study of Ukrainian Refugees in Germany
WATT	Wealth-Holders at the Top: An Interdisciplinary Research Network
WEALTHTRAJECT	Understanding Trajectories of Wealth Accumulation and Their Variability
WZB	Berlin Social Science Center



IMPRINT

SOEP

The Socio-Economic Panel at DIW Berlin

German Institute for Economic Research (DIW Berlin) e.V.
Anton-Wilhelm-Amo-Straße 58 | 10117 Berlin | Germany

SOEP Community Management

Phone +49-30-897 89-292

E-Mail: soepmail@diw.de

Internet: www.diw.de/soep_en

Concept and Developmental Editing

Janina Britzke, Markus M. Grabka, Verena Neumann

Project Management

Janina Britzke

Translation and Line Editing

Adam Lederer

Photos

pp. 4, 6, 10, 11, 12, 13, 15, 18, 19, 20, 30, 31, 41 DIW Berlin/Photothek | **p. 10** Vladimir Bondarenko (photo from video) | **p. 11** LfBi 2025, LfBi 2025, DGOE/GOR 2025 | **p. 15** YES! – Young Economic Solutions | **p. 26** DIW Berlin/D. Graeber+N. Murray | **pp. 29/30** Anna Logue, Stefan Obermeier, Kelly Moseley, Felix Imhof, Alex Habermehl, Bongaloo.nl, Michel Brumat, Tobias Hase | **pp. 13, 29/30, 67** private pictures | **pp. 32, 68** Lisa Beller | **p. 35** pixabay photo by StockSnap (31.07.2017) | **p. 36** pexels photo by Tiger Lily (21.02.2021) and pixabay photo by Tumisu (14.05.2019) | **p. 37** pixabay photo by moerschky (16.12.2014) | **pp. 60–68** DIW Berlin/Photothek and DIW Berlin/Florian Schuh

Design

Ann Katrin Siedenburg | www.bureau-versal.de

Printing

Torsten Tews, DIW Berlin

ISSN 219226 (print)

ISSN 186131 (online)

Berlin, June 2026

Editorial deadline: April 10, 2026

The Socio-Economic Panel (SOEP) is the largest and longest-running multidisciplinary longitudinal study in Germany. The SOEP is an integral part of Germany's scientific research infrastructure and is funded by the Federal Ministry of Research, Technology and Space (BMFTR) and state governments within the framework of the Leibniz Association (WGL). The SOEP is based at DIW Berlin.



SOEP
The Socio-Economic Panel
at DIW Berlin



www.diw.de/soep
www.diw.de/soep-rdc



DIW Berlin – German Institute
for Economic Research



Anton-Wilhelm-Amo-Straße 58
10117 Berlin
www.diw.de