

75

Data Documentation

Documentation of Sample Sizes and Panel Attrition in the German Socio Economic Panel (SOEP) (1984 until 2013)

IMPRESSUM

© DIW Berlin, 2014

DIW Berlin

Deutsches Institut für Wirtschaftsforschung

Mohrenstr. 58

10117 Berlin

Tel. +49 (30) 897 89-0

Fax +49 (30) 897 89-200

www.diw.de

ISSN 1861-1532

All rights reserved.

Reproduction and distribution

in any form, also in parts,

requires the express written

permission of DIW Berlin.

Data Documentation 75

Martin Kroh and Rainer Siegers*

Documentation of Sample Sizes and Panel Attrition in the German Socio Economic Panel (SOEP) (1984 until 2013)

Berlin, September 2014

* DIW Berlin, Socio-Economic Panel Study. mkroh@diw.de
I would like to thank Luisa Hilgert and Linda Wittbrodt for excellent research assistance.

Contents

| | |
|--|-----------|
| 1 Introduction | 1 |
| 2 Developments in Sample Size..... | 3 |
| 2.1 Development of the Number of Successful Interviews by Cross-Section | 4 |
| 2.2 Continuance and Exit: The First Wave Gross Samples and their Participatory Behavior | 13 |
| 2.3 New Entrants through Birth or Move into SOEP Households and Their Participation Behavior | 18 |
| 2.4 The Risk of Survey-Related Panel Attrition | 23 |
| 3 Panel Attrition Due to Unsuccessful Follow-Ups | 28 |
| 3.1 The Frequency of Successful Follow-Ups | 28 |
| 3.2 Predicting the Probability of Successful vs. Unsuccessful Follow-Ups in the Year 2013 | 31 |
| 4 Panel Attrition Due to Refusals..... | 34 |
| 4.1 The Frequency of Participation | 34 |
| 4.2 Predicting the Probability of Re-Interviewing versus Refusal in the Year 2013 | 36 |
| 5 Summary Statistics of the Derived Longitudinal and Cross-Sectional Weights | 44 |
| 6 References..... | 49 |

Tables

Table 1: **The Frequency of Households to be Re-Contacted and the Relative Proportion of Successful Follow-Ups through Subsamples A to E by Year.** 29

Table 2: **The Frequency of Households to be Re-Contacted and the Relative Proportion of Successful Follow-Ups through Subsamples F to K by Year.**..... 30

Table 3: **Definition of the Regressors of the Logit Model of Unsuccessful Follow-Ups.** 31

Table 4: **Estimates of Logit Models of the Probability of Re-Contacting a Household (Relative to Unsuccessful Follow-Up) in 2013.**..... 33

Table 5: **The Frequency of Re-Contacted Households and the Relative Proportion of Participation in Subsamples A through E by Year.**..... 35

Table 6: **The Frequency of Re-Contacted Households and the Relative Proportion of Participation in Subsamples F through K by Year.**..... 36

Table 7: **Definition of the Regressors of the Logit Model of Refusal.**..... 37

Table 8: **Estimates of Logit Models for the Probability of Re-Interviewing a Household (Relative to Refusal) in 2013.**..... 41

Table 9: **Summary Statistics of the Derived Longitudinal Weights at the Household Level for Subsamples A through D (Percentiles of \$HBLEIB up to Wave 30).** 45

Table 10: **Summary Statistics of the Derived Longitudinal Weights at the Household Level for Subsamples E through G (Percentiles of \$HBLEIB up to Wave 30).** 46

Table 11: **Summary Statistics of the Derived Longitudinal Weights at the Household Level for Subsamples H, J and K (Percentiles of \$HBLEIB up to Wave 30).** 46

Table 12: **Summary Statistics of the Derived Cross-Sectional Weights at the Household Level (Percentiles of \$HHRF up to Wave 29).**..... 47

Table 13: **Summary Statistics of the Derived Cross-Sectional Weights at the Person Level (Percentiles of \$PHRF up to Wave 29).** 48

Figures

| | |
|---|----|
| Figure 1: The Number of Successful Interviews with Persons by Subsamples A through K, Waves 1 to 30. | 5 |
| Figure 2: Comparison of Successful Interviews with Persons and Households (Subsamples A and B), Waves 1 to 30. | 6 |
| Figure 3: Comparison of Successful Interviews with Persons and Households (Subsample C), Waves 1 to 24. | 7 |
| Figure 4: Comparison of Successful Interviews with Individuals and Households (Subsample D), Waves 1 to 19. | 8 |
| Figure 5: Comparison of successful interviews with individuals and households (Subsample E), Waves 1 to 16. | 9 |
| Figure 6: Comparison of Successful Interviews with Individuals and Households (Subsample F), Waves 1 to 14. | 10 |
| Figure 7: Comparison of Successful Interviews with Individuals and Households (Subsample G), Waves 1 to 12. | 11 |
| Figure 8: Comparison of Successful Interviews with Individuals and Households (Subsample H), Waves 1 to 8. | 12 |
| Figure 9: All First-Wave Persons (Gross Subsample A). Development up to Wave 30. | 14 |
| Figure 10: All First Wave Persons (Gross Subsample B). Development up to Wave 30. | 14 |
| Figure 11: All First Wave Persons (Gross Subsample C). Development up to Wave 24. | 15 |
| Figure 12: All First Wave Persons (Gross Subsample D). Development up to Wave 19. | 15 |
| Figure 13: All First Wave Persons (Gross Subsample E). Development up to Wave 16. | 16 |
| Figure 14: All First Wave Persons (Gross Subsample F). Development up to Wave 14. | 16 |
| Figure 15: All First Wave Persons (Gross Subsample G). Development up to Wave 12. | 17 |
| Figure 16: All First Wave Persons (Gross Subsample H). Development up to Wave 8. | 17 |
| Figure 17: Entrants and their Participation Behavior (Subsample A). | 19 |
| Figure 18: Entrants and their Participation Behavior (Subsample B). | 19 |
| Figure 19: Entrants and their Participation Behavior (Subsample C). | 20 |
| Figure 20: Entrants and their Participation Behavior (Subsample D). | 20 |
| Figure 21: Entrants and their Participation Behavior (Subsample E). | 21 |
| Figure 22: Entrants and their Participation Behavior (Subsample F). | 21 |
| Figure 23: Entrants and their Participation Behavior (Subsample G). | 22 |
| Figure 24: Entrants and their Participation Behavior (Subsample H). | 22 |

Figure 25: **Successful Re-Interviewing of First-Wave Respondents by Subsamples A, B, C. Kaplan-Meier Estimates of Survey-Related Attrition Ignoring Deaths and Moves Abroad.....** 24

Figure 26: **Successful Re-Interviewing of First-Wave Respondents by Subsamples D, E, F. Kaplan-Meier Estimates of Survey-Related Attrition Ignoring Deaths and Moves Abroad.....** 24

Figure 27: **Successful Re-Interviewing of First-Wave Respondents by Subsamples G, H, J and K. Kaplan-Meier Estimates of Survey-Related Attrition Ignoring Deaths and Moves Abroad.....** 25

Figure 28: **Successful Re-Interviewing of All First-Wave Respondents by Age Categories. Kaplan-Meier Estimates of Survey-Related Attrition Ignoring Deaths and Moves Abroad.....** 25

Figure 29: **Successful Re-Interviewing of All First-Wave Respondents by Occupation. Kaplan-Meier Estimates of Survey-Related Attrition Ignoring Deaths and Moves Abroad.** 26

Figure 30: **Successful Re-Interviewing of All First-Wave Respondents by Income Quintiles. Kaplan-Meier Estimates of Survey-Related Attrition Ignoring Deaths and Moves Abroad.....** 26

Figure 31: **Successful Re-Interviewing of All First-Wave Respondents by Education. Kaplan-Meier Estimates of Survey-Related Attrition Ignoring Deaths and Moves Abroad.** 27

1 Introduction

This data documentation is meant to provide SOEP users with a general overview of the longitudinal development of the survey over the past 30 years and the derivation of weights that compensate for selective panel attrition. In the first section, we report the number of household and personal interviews by cross-section. We do so for the entire SOEP sample as a whole, as well as for sub-samples A through K individually.

The SOEP study surveys not only the original sample from the first wave, but also households and persons that entered the survey at later points in time. They enter, for example, when SOEP households split (i.e., individuals move out and form their own households), when people move into SOEP households, and when an original sample member gives birth to a “new sample member”. For a detailed review of the SOEP inclusion rules for new sample units and their treatment within the weighting framework see Spiess et al. (2008) and Schonlau et al. (2011). The second section of the present paper on the longitudinal development of the SOEP reports descriptive figures of the participatory behavior of the original sample members and the entrance patterns of new sample members.

Households may leave the survey for several reasons. SOEP’s weighting strategy distinguishes between survey-related reasons and reasons unrelated to the survey (for a detailed description of the SOEP weighting strategy, see Rendtel 1995 and Schonlau et al. 2013 and for a general overview, Haisken-DeNew & Frick 2001). We ignore panel attrition of the latter form due to respondents moving abroad or dying, since these cases technically represent an exit from the underlying population. The second section of this paper provides initial evidence on the risk of survey-related panel attrition in different groups of the original sample units (e.g., in different sub-samples, age, educational, and income groups).

The third section reports in more detail on the occurrence of unsuccessful follow-ups to household addresses by cross-section and sub-sample, and sub-sample-specific regression models of the probability of unsuccessful follow-ups in 2013 based on the characteristics of households measured in 2012. The fourth section does the same for the second form of survey-related attrition: refusals.

Based on the regression models of unsuccessful-follow ups and refusals, we derive predicted observation probabilities. The inverse of the product of these predicted probabilities gives the longitudinal weighting variables for the year 2013: BDHBLEIB and BDPBLEIB. Based on the inverse of the probability of observing households and persons in 2012, the staying probability in 2013, and additional post-stratification to meet benchmarks of known marginals of the underlying population in 2013, we derive the cross-sectional weights BDHHRF and BDPHRF. The final section of this paper documents some summary statistics of the development of the longitudinal and the cross-sectional weights by sub-sample and wave.

2 Developments in Sample Size

With respect to developments in sample size, the following figures focus on (2.1) comparing the number of successful interviews by cross-section, (2.2) providing a longitudinal study of panel attrition in original sample members, (2.3) showing entrance of new sample members by birth / moving into SOEP households and their participation behavior, and (2.4) assessing the risk of survey-related attrition of original sample respondents by social characteristics.

Note that the sample sizes of the English public-use version of SOEP and the German DIW version differ by approximately 5 percent. Five percent of the original SOEP data was excluded in compliance with German data protection laws, which was accomplished technically by randomly selecting 5 percent of the original wave 1 households and dropping these and the persons living in them from the English public-use version. Hence the difference in sample sizes is not always exactly 5 percent. The sample sizes documented below refer to the original DIW database.

2.1 Development of the Number of Successful Interviews by Cross-Section

The following figures display the number of successful interviews considering different aspects:

Figure 1: **The Number of Successful Interviews with Persons by Subsamples A through K, Waves 1 to 30.** 5

Figure 2: **Comparison of Successful Interviews with Persons and Households (Subsamples A and B), Waves 1 to 30.**..... 6

Figure 3: **Comparison of Successful Interviews with Persons and Households (Subsample C), Waves 1 to 24.**..... 7

Figure 4: **Comparison of Successful Interviews with Individuals and Households (Subsample D), Waves 1 to 19.**..... 8

Figure 5: **Comparison of successful interviews with individuals and households (Subsample E), Waves 1 to 16.** 9

Figure 6: **Comparison of Successful Interviews with Individuals and Households (Subsample F), Waves 1 to 14.**..... 10

Figure 7: **Comparison of Successful Interviews with Individuals and Households (Subsample G), Waves 1 to 12.** 11

Figure 8: **Comparison of Successful Interviews with Individuals and Households (Subsample H), Waves 1 to 8.**..... 12

Figure 1: The Number of Successful Interviews with Persons by Subsamples A through K, Waves 1 to 30.

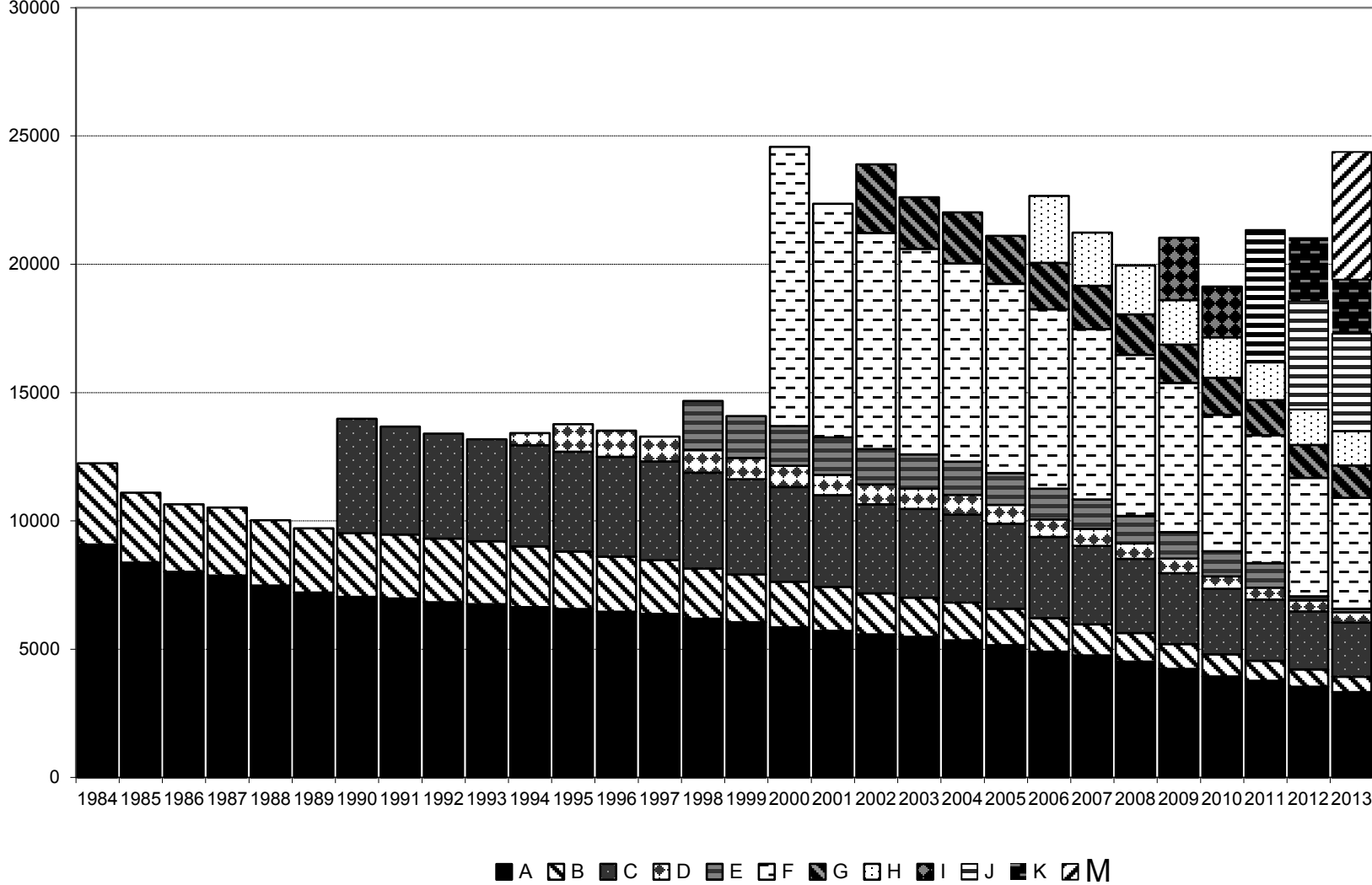


Figure 2: Comparison of Successful Interviews with Persons and Households (Subsamples A and B), Waves 1 to 30.

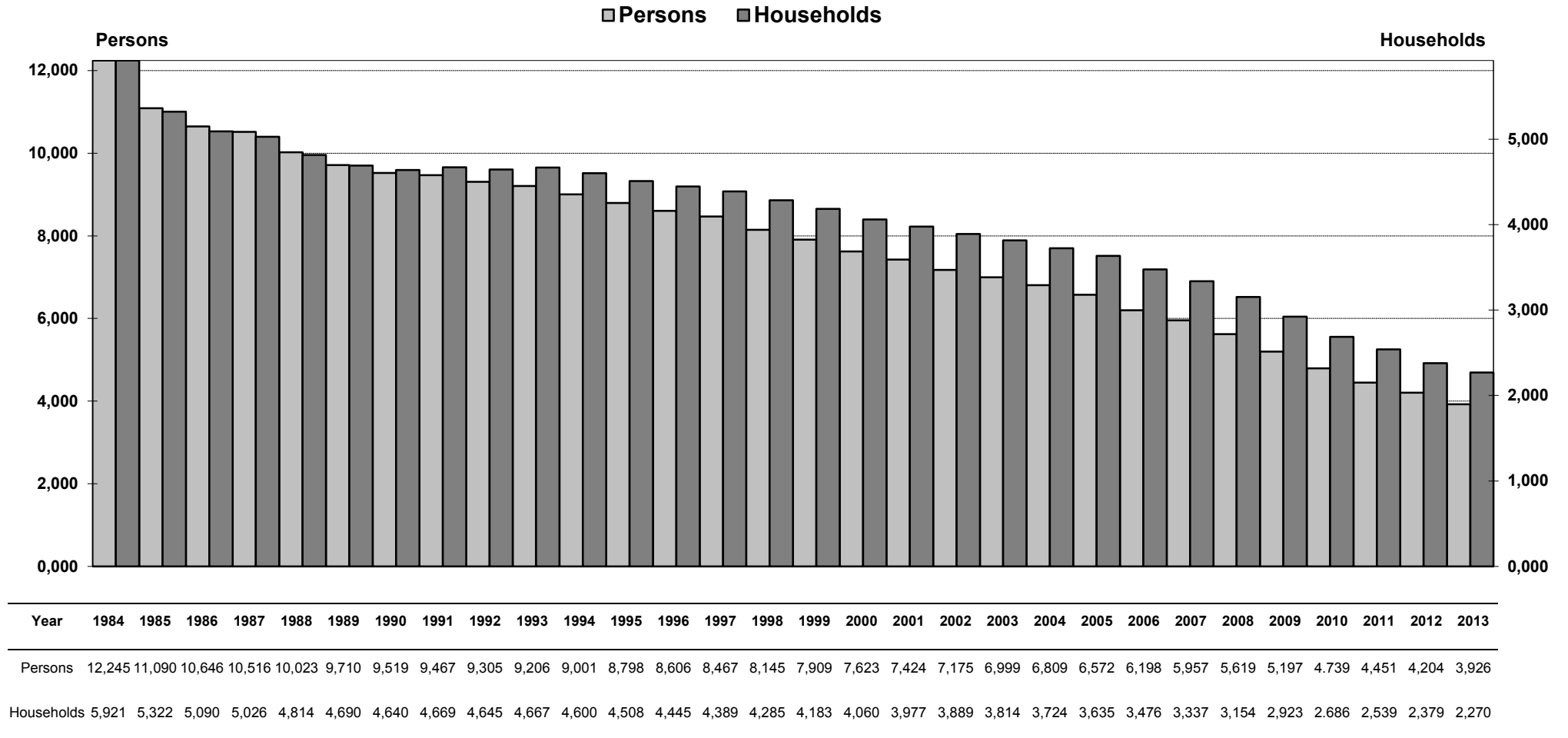
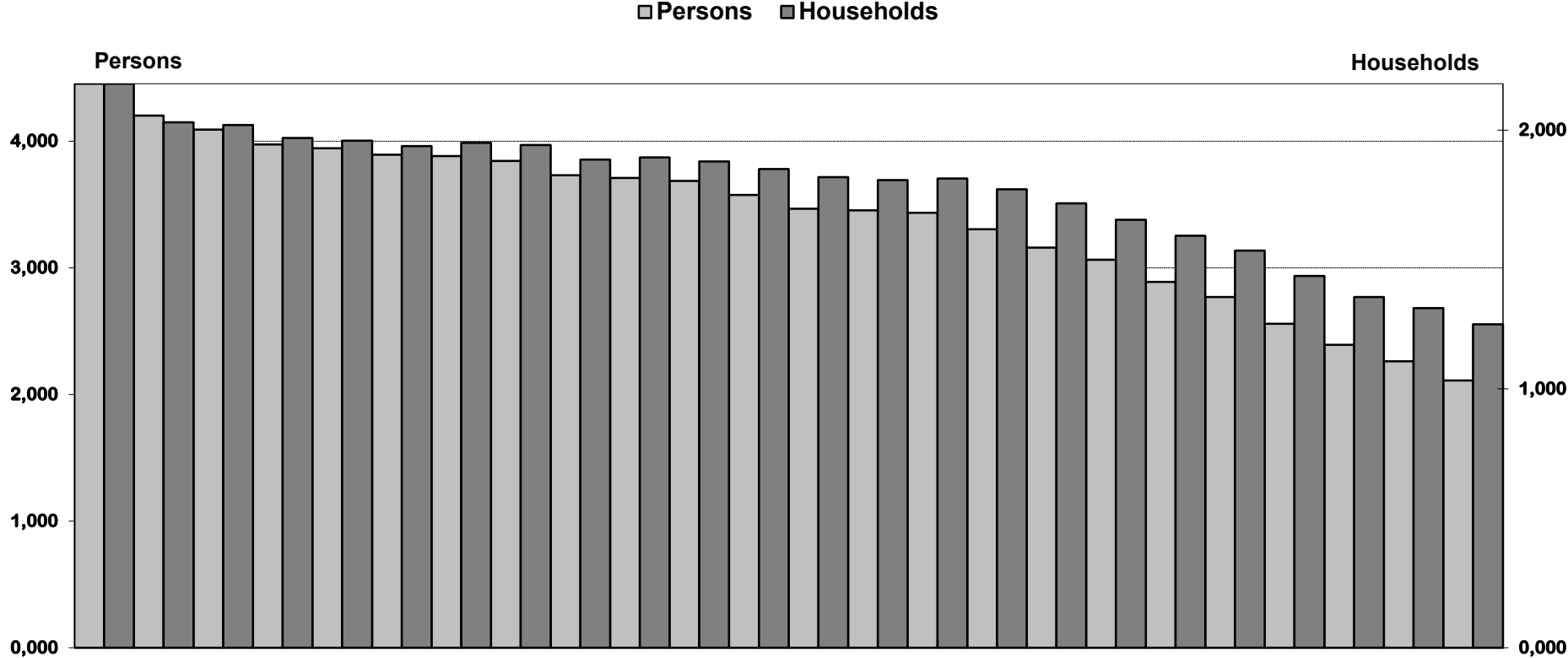
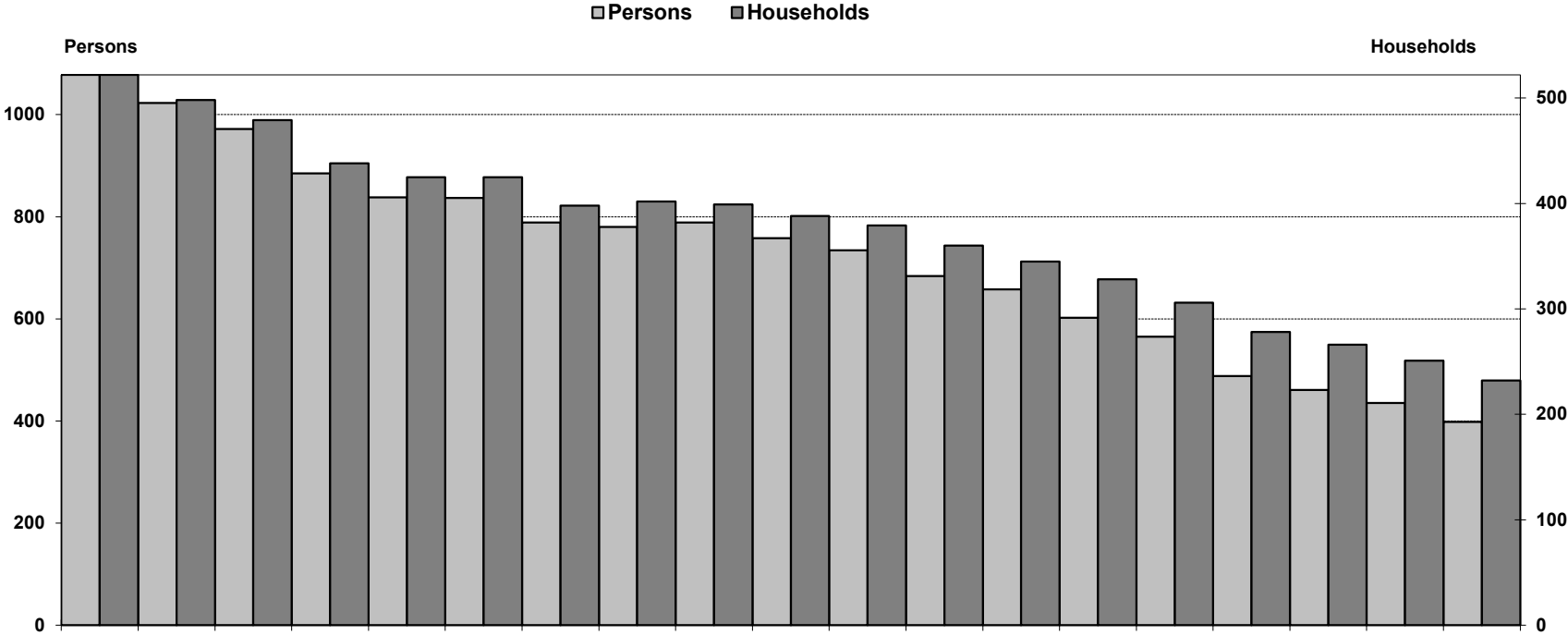


Figure 3: Comparison of Successful Interviews with Persons and Households (Subsample C), Waves 1 to 24.



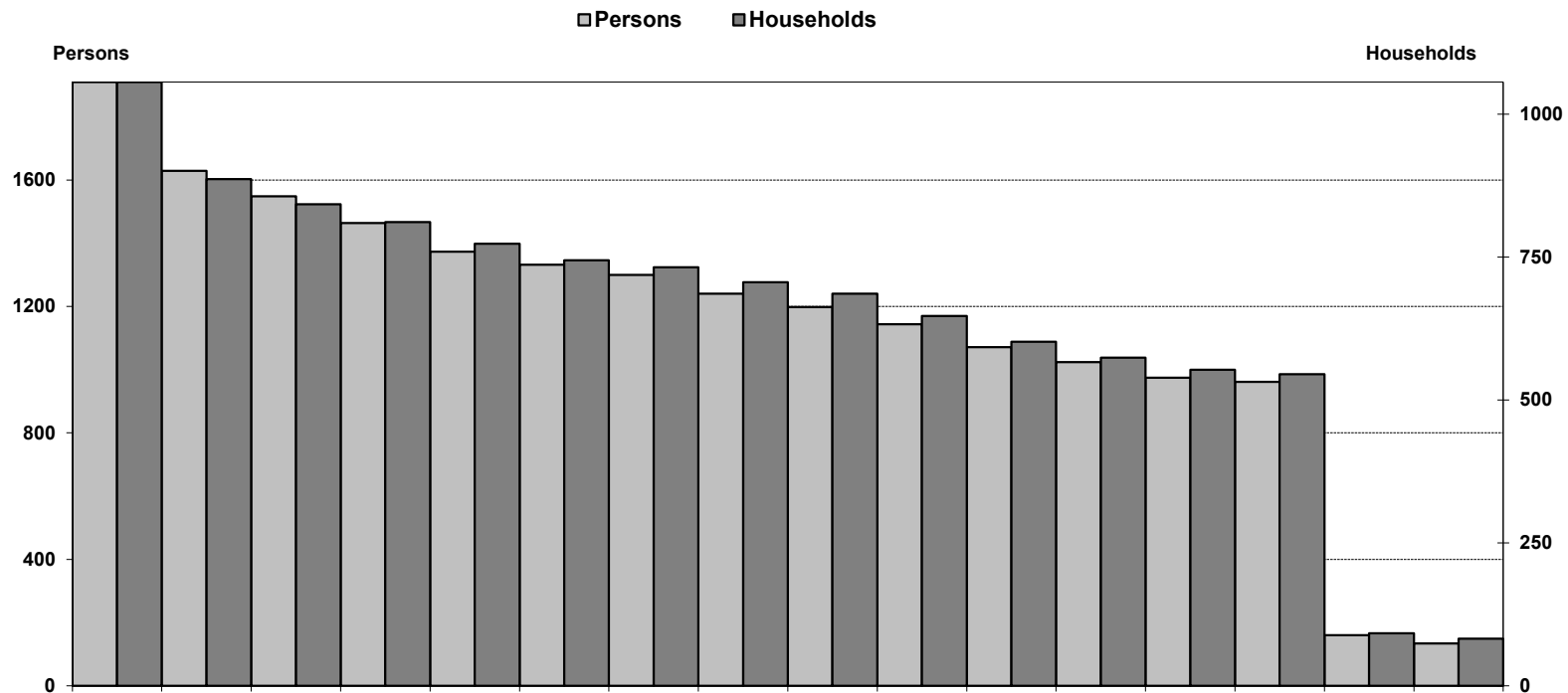
| Year | 1990 | 1991 | 1992 | 1993 | 1994 | 1995 | 1996 | 1997 | 1998 | 1999 | 2000 | 2001 | 2002 | 2003 | 2004 | 2005 | 2006 | 2007 | 2008 | 2009 | 2010 | 2011 | 2012 | 2013 |
|------------|-------|-------|-------|-------|-------|-------|-------|-------|-------|-------|-------|-------|-------|-------|-------|-------|-------|-------|-------|-------|-------|-------|-------|-------|
| Persons | 4,453 | 4,202 | 4,092 | 3,973 | 3,945 | 3,892 | 3,882 | 3,844 | 3,730 | 3,709 | 3,687 | 3,576 | 3,466 | 3,453 | 3,435 | 3,304 | 3,159 | 3,063 | 2,889 | 2,769 | 2,559 | 2,392 | 2,262 | 2,111 |
| Households | 2,179 | 2,030 | 2,020 | 1,970 | 1,959 | 1,938 | 1,951 | 1,942 | 1,886 | 1,894 | 1,879 | 1,850 | 1,818 | 1,807 | 1,813 | 1,771 | 1,717 | 1,654 | 1,592 | 1,535 | 1,437 | 1,355 | 1,312 | 1,250 |

Figure 4: Comparison of Successful Interviews with Individuals and Households (Subsample D), Waves 1 to 19.



| Year | 1995 | 1996 | 1997 | 1998 | 1999 | 2000 | 2001 | 2002 | 2003 | 2004 | 2005 | 2006 | 2007 | 2008 | 2009 | 2010 | 2011 | 2012 | 2013 |
|------------|-------|-------|------|------|------|------|------|------|------|------|------|------|------|------|------|------|------|------|------|
| Persons | 1,078 | 1,023 | 972 | 885 | 838 | 837 | 789 | 780 | 789 | 758 | 734 | 684 | 658 | 602 | 565 | 488 | 461 | 435 | 398 |
| Households | 522 | 498 | 479 | 441 | 425 | 425 | 398 | 402 | 399 | 388 | 379 | 360 | 345 | 328 | 306 | 278 | 266 | 251 | 232 |

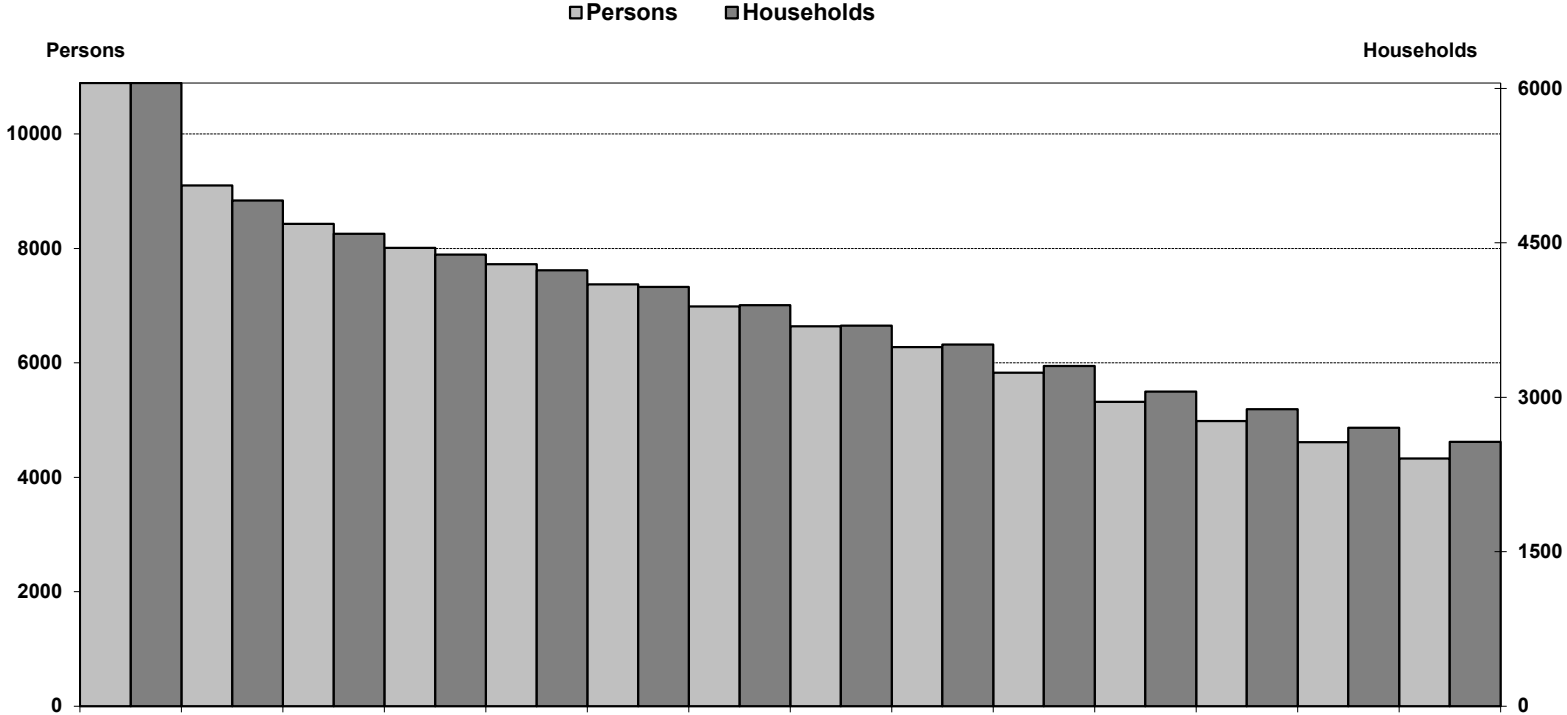
Figure 5: Comparison of successful interviews with individuals and households (Subsample E), Waves 1 to 16.



| Year | 1998 | 1999 | 2000 | 2001 | 2002 | 2003 | 2004 | 2005 | 2006 | 2007 | 2008 | 2009 | 2010 | 2011 | 2012 | 2013 |
|------------|-------|-------|-------|-------|-------|-------|-------|-------|-------|-------|-------|-------|------|------|------|------|
| Persons | 1,910 | 1,629 | 1,549 | 1,464 | 1,373 | 1,332 | 1,300 | 1,240 | 1,198 | 1,144 | 1,071 | 1,024 | 975 | 961 | 160 | 134 |
| Households | 1,056 | 886 | 842 | 811 | 773 | 744 | 732 | 706 | 686 | 647 | 602 | 574 | 553 | 545 | 92 | 82 |

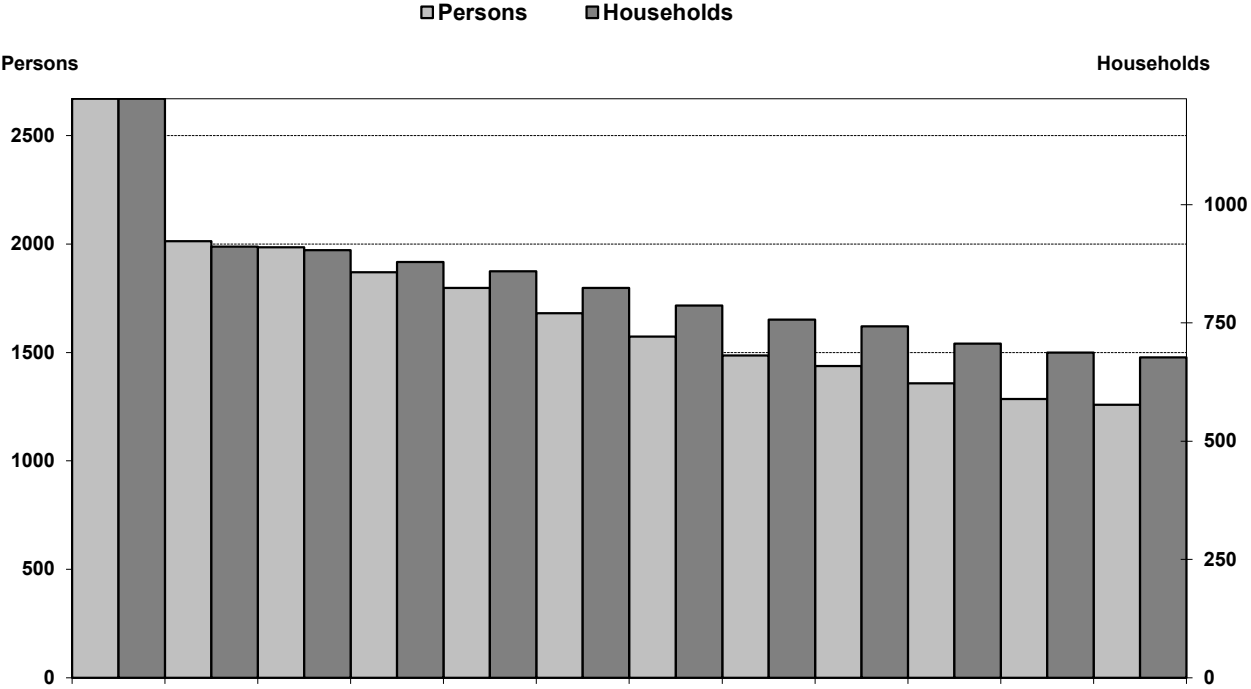
Note. In Wave BC (2012), Sample E was split between SOEP-Innovation Sample (SOEP-IS) and SOEP-Core (N=82 Households).

Figure 6: Comparison of Successful Interviews with Individuals and Households (Subsample F), Waves 1 to 14.



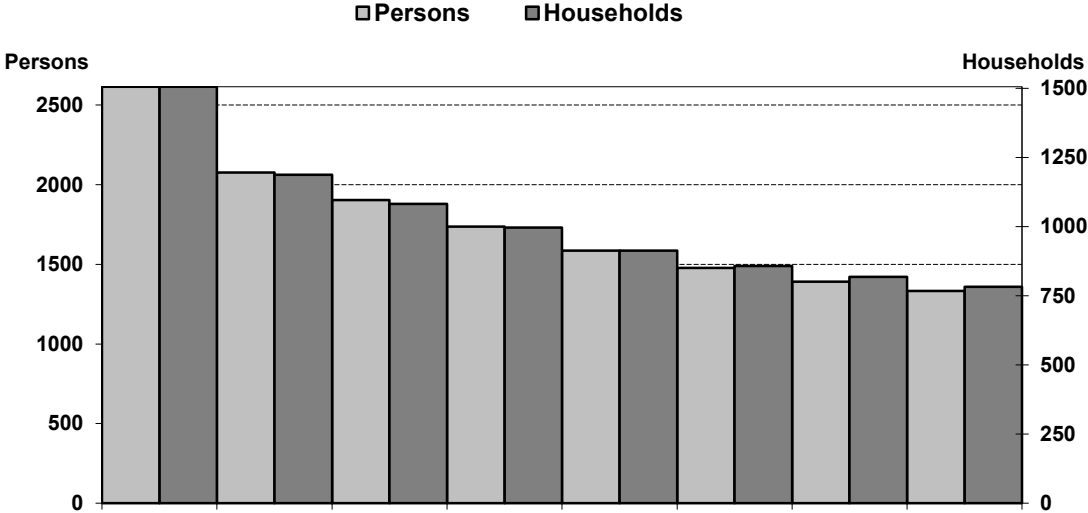
| Year | 2000 | 2001 | 2002 | 2003 | 2004 | 2005 | 2006 | 2007 | 2008 | 2009 | 2010 | 2011 | 2012 | 2013 |
|------------|--------|-------|-------|-------|-------|-------|-------|-------|-------|-------|-------|-------|-------|-------|
| Persons | 1,0890 | 9,098 | 8,427 | 8,006 | 7,724 | 7,371 | 6,986 | 6640 | 6,274 | 5,824 | 5,316 | 4,984 | 4,610 | 4,329 |
| Households | 6,052 | 4,911 | 4,586 | 4,386 | 4,234 | 4,070 | 3,895 | 3,694 | 3,513 | 3,303 | 3,055 | 2,885 | 2,702 | 2567 |

Figure 7: Comparison of Successful Interviews with Individuals and Households (Subsample G), Waves 1 to 12.



| Year | 2002 | 2003 | 2004 | 2005 | 2006 | 2007 | 2008 | 2009 | 2010 | 2011 | 2012 | 2013 |
|------------|-------|-------|-------|-------|-------|-------|-------|-------|-------|-------|-------|------|
| Persons | 2,671 | 2,013 | 1,986 | 1,870 | 1,798 | 1,682 | 1,574 | 1,487 | 1,438 | 1,358 | 1,285 | 1259 |
| Households | 1,224 | 911 | 904 | 879 | 859 | 824 | 787 | 757 | 743 | 706 | 687 | 677 |

Figure 8: Comparison of Successful Interviews with Individuals and Households (Subsample H), Waves 1 to 8.



| Year | 2006 | 2007 | 2008 | 2009 | 2010 | 2011 | 2012 | 2013 |
|------------|-------|-------|-------|-------|-------|-------|-------|-------|
| Persons | 2,616 | 2,077 | 1,904 | 1,737 | 1,587 | 1,478 | 1,392 | 1,333 |
| Households | 1,506 | 1,188 | 1,082 | 996 | 913 | 858 | 818 | 783 |

2.2 Continuance and Exit: The First Wave Gross Samples and their Participatory Behavior

The following figures display the participation behavior of the first-wave respondents in the subsequent years distinguishing between continued participation, exits due to survey-unrelated attrition, and exits due to survey-related attrition.

| | |
|--|----|
| Figure 9: All First-Wave Persons (Gross Subsample A). Development up to Wave 30. | 14 |
| Figure 10: All First Wave Persons (Gross Subsample B). Development up to Wave 30. | 14 |
| Figure 11: All First Wave Persons (Gross Subsample C). Development up to Wave 24. | 15 |
| Figure 12: All First Wave Persons (Gross Subsample D). Development up to Wave 19. | 15 |
| Figure 13: All First Wave Persons (Gross Subsample E). Development up to Wave 16. | 16 |
| Figure 14: All First Wave Persons (Gross Subsample F). Development up to Wave 14. | 16 |
| Figure 15: All First Wave Persons (Gross Subsample G). Development up to Wave 12. | 17 |
| Figure 16: All First Wave Persons (Gross Subsample H). Development up to Wave 8. | 17 |

Figure 9: All First-Wave Persons (Gross Subsample A). Development up to Wave 30.

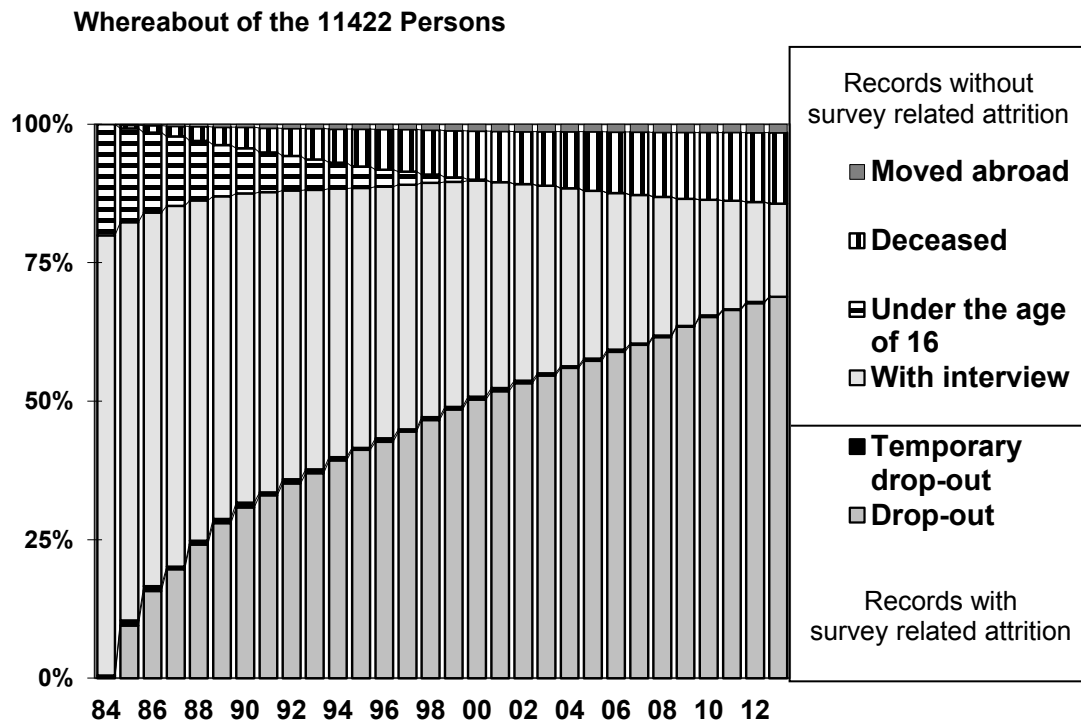


Figure 10: All First Wave Persons (Gross Subsample B). Development up to Wave 30.

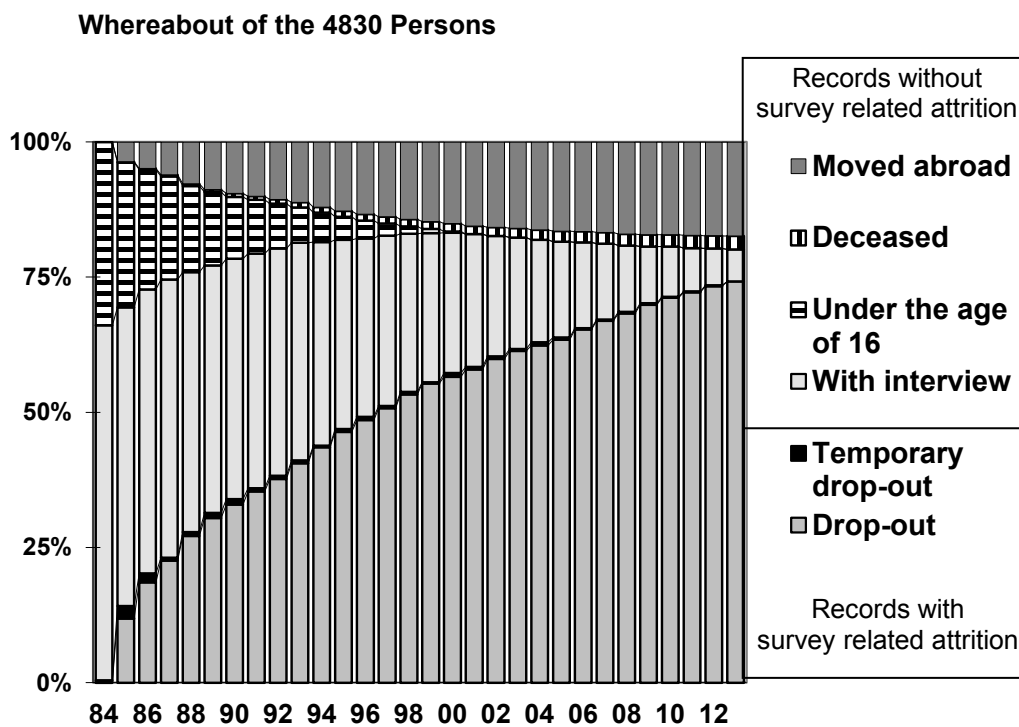


Figure 11: All First Wave Persons (Gross Subsample C). Development up to Wave 24.

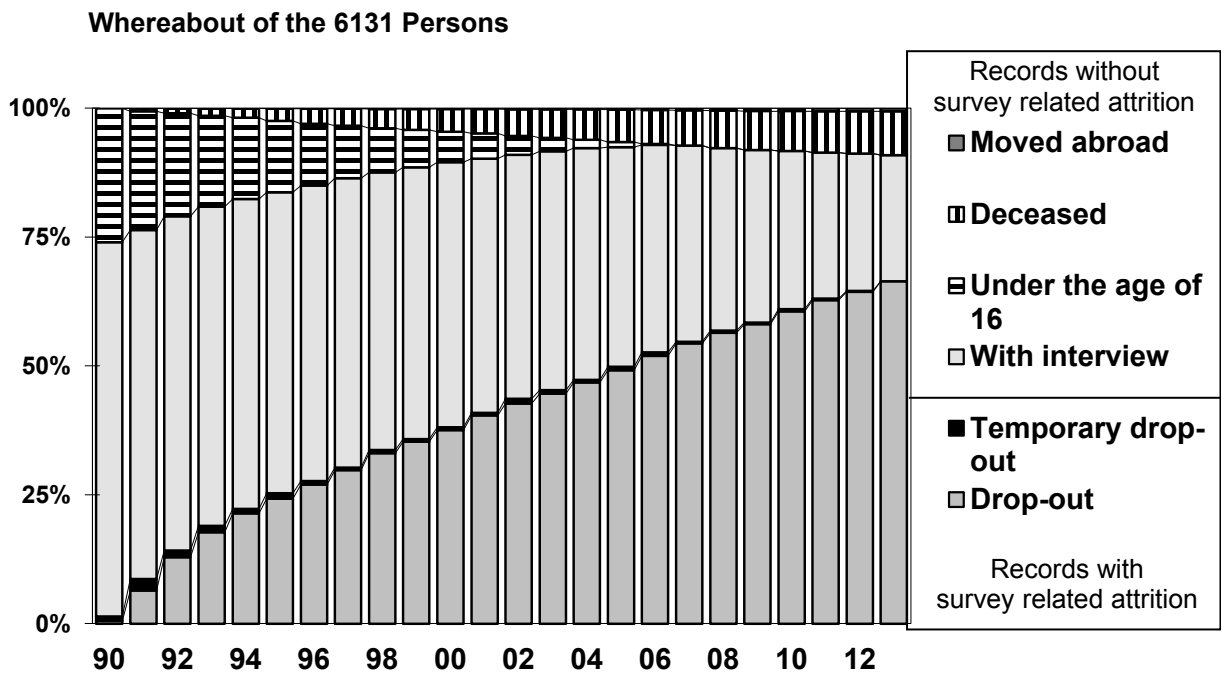


Figure 12: All First Wave Persons (Gross Subsample D). Development up to Wave 19.

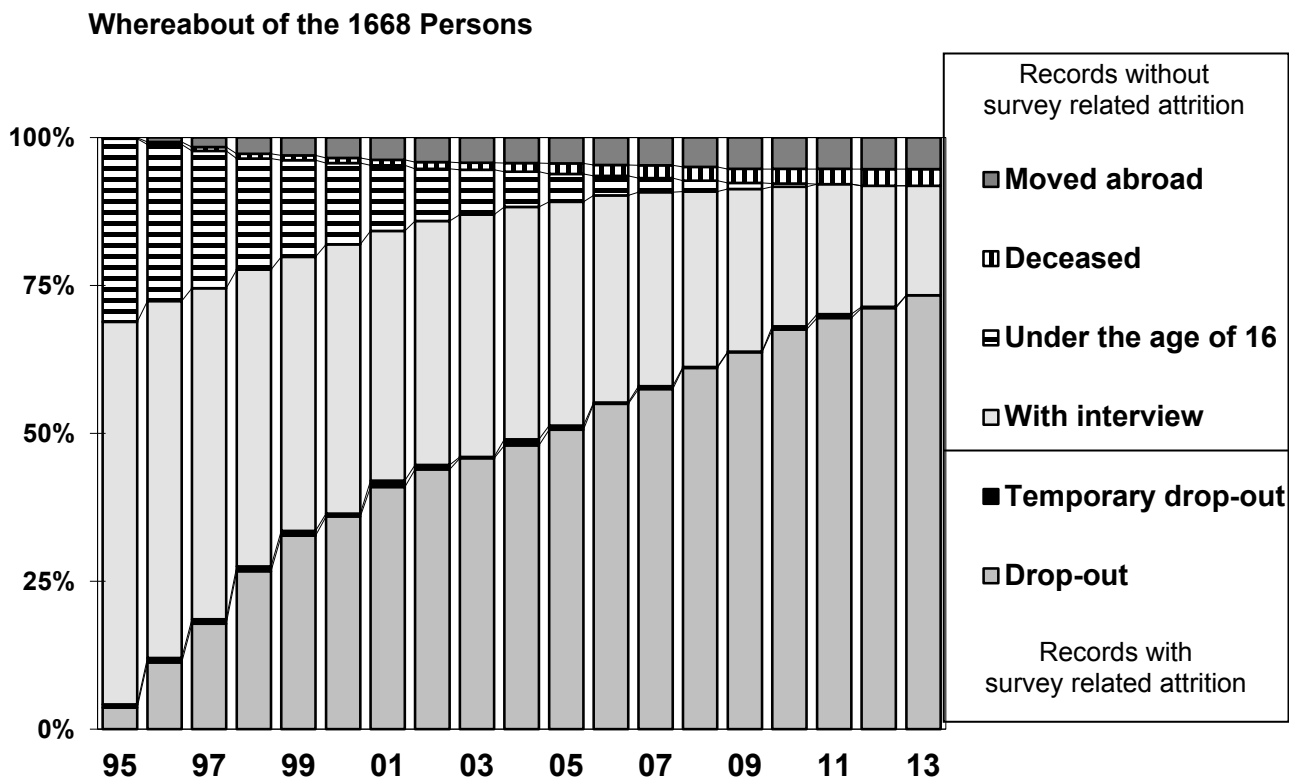


Figure 13: All First Wave Persons (Gross Subsample E). Development up to Wave 16.
Whereabout of the 2446 Persons

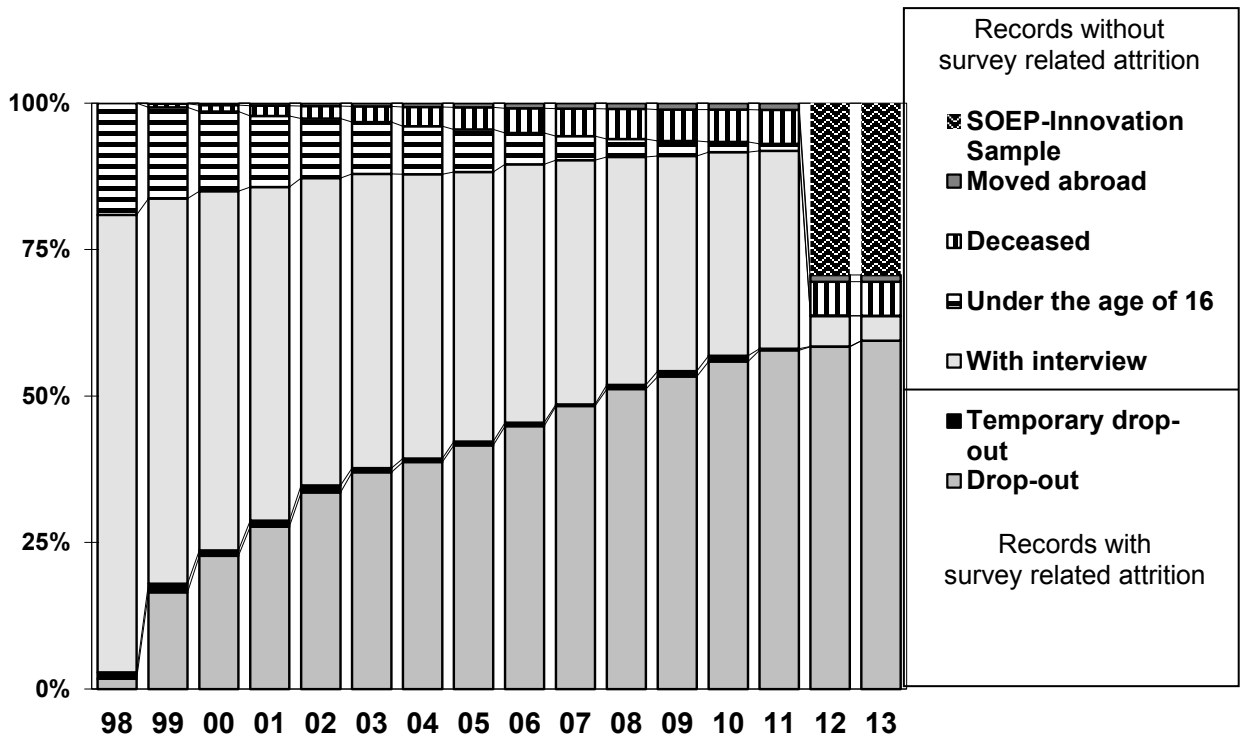


Figure 14: All First Wave Persons (Gross Subsample F). Development up to Wave 14.
Whereabout of the 14510 Persons

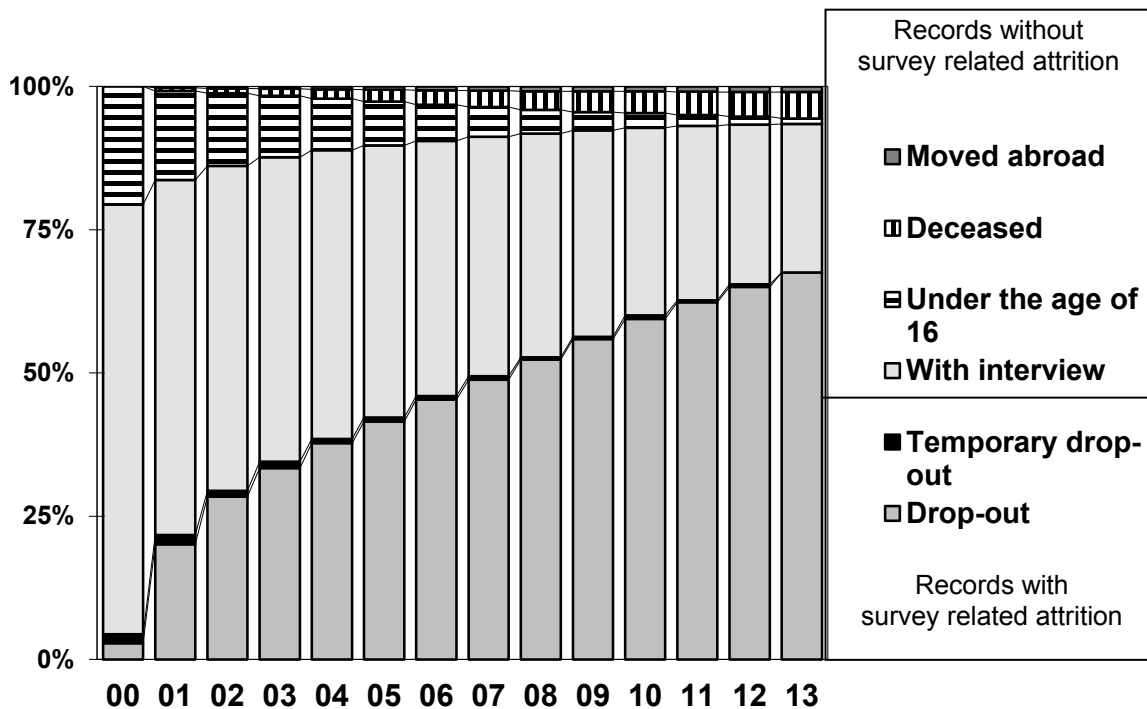


Figure 15: All First Wave Persons (Gross Subsample G). Development up to Wave 12.

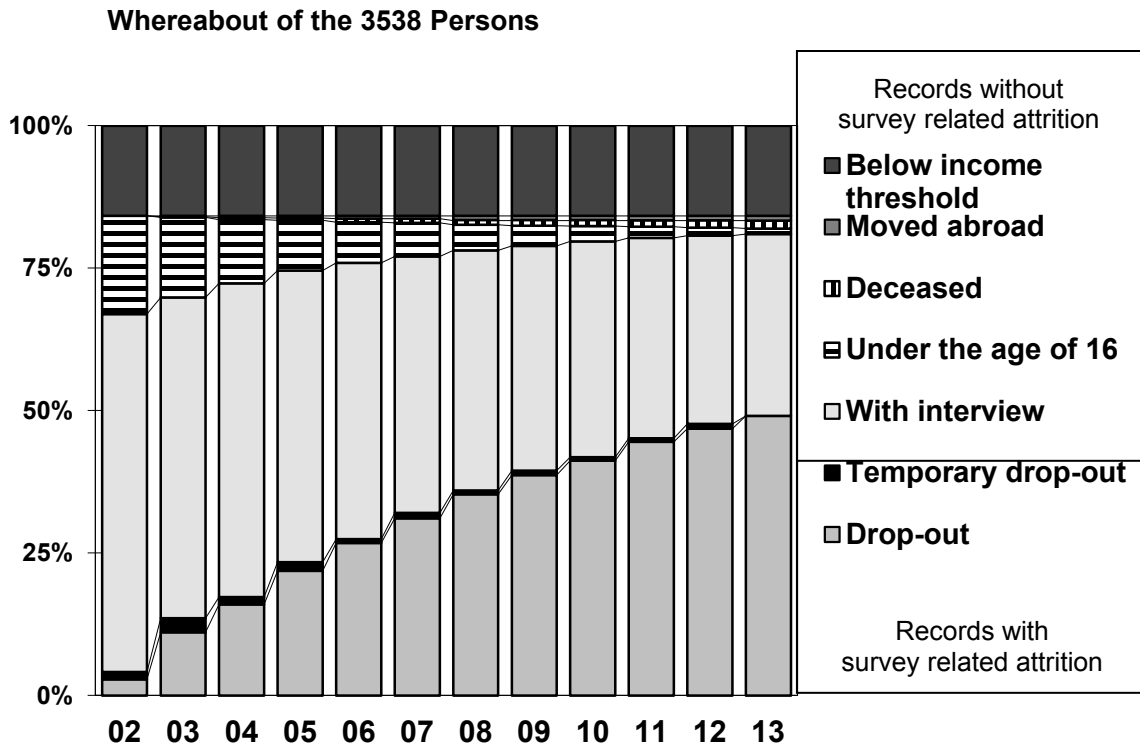
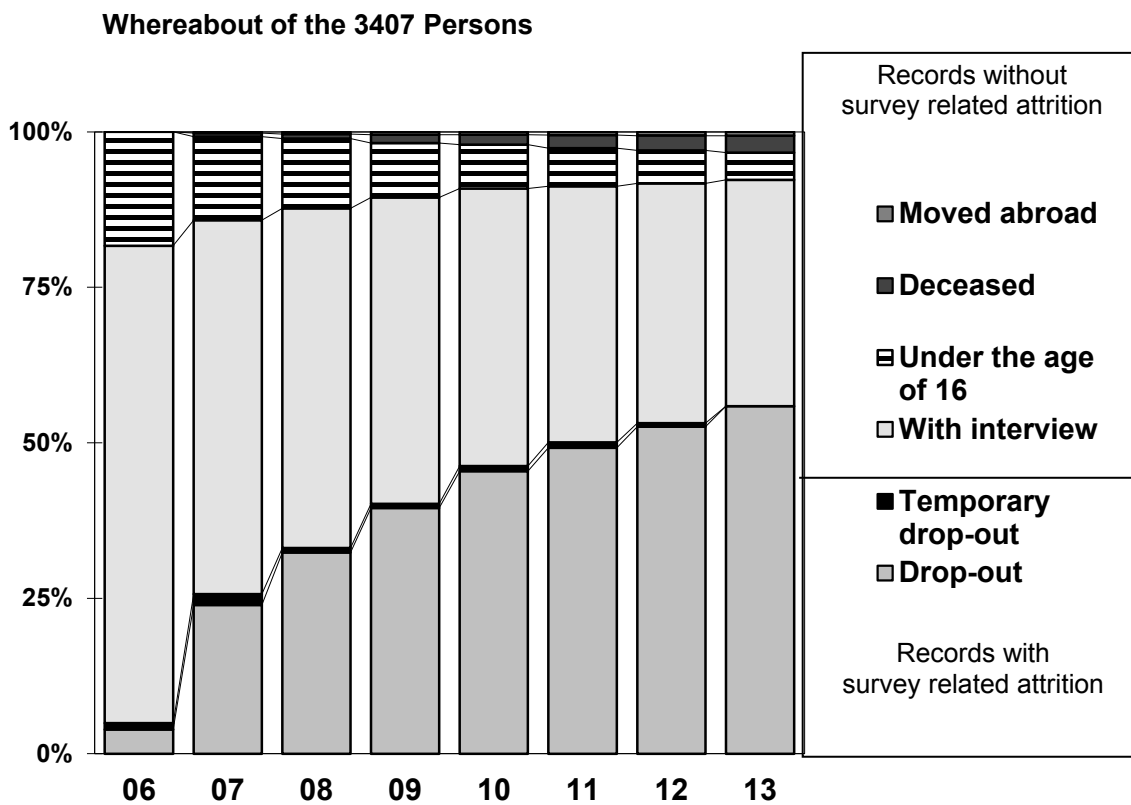


Figure 16: All First Wave Persons (Gross Subsample H). Development up to Wave 8.



2.3 New Entrants through Birth or Move into SOEP Households and Their Participation Behavior

The following figures display the participation behavior of the non-original sample members and their entrance to the ongoing survey, distinguishing between continuation of participation, exits due to survey unrelated attrition, and exits due to survey-related attrition.

| | |
|---|----|
| Figure 17: Entrants and their Participation Behavior (Subsample A) | 19 |
| Figure 18: Entrants and their Participation Behavior (Subsample B) | 19 |
| Figure 19: Entrants and their Participation Behavior (Subsample C) | 20 |
| Figure 20: Entrants and their Participation Behavior (Subsample D) | 20 |
| Figure 21: Entrants and their Participation Behavior (Subsample E) | 21 |
| Figure 22: Entrants and their Participation Behavior (Subsample F) | 21 |
| Figure 23: Entrants and their Participation Behavior (Subsample G) | 22 |
| Figure 24: Entrants and their Participation Behavior (Subsample H) | 22 |

Figure 17: Entrants and their Participation Behavior (Subsample A).

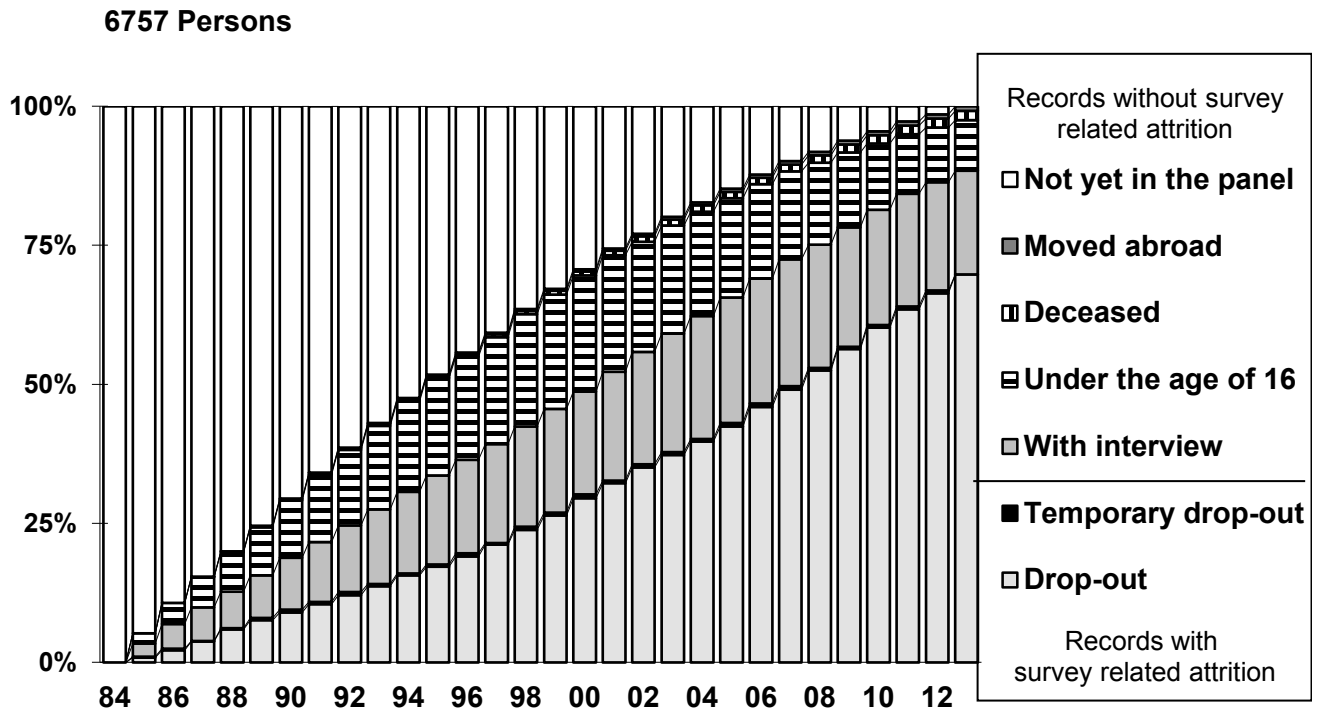


Figure 18: Entrants and their Participation Behavior (Subsample B).

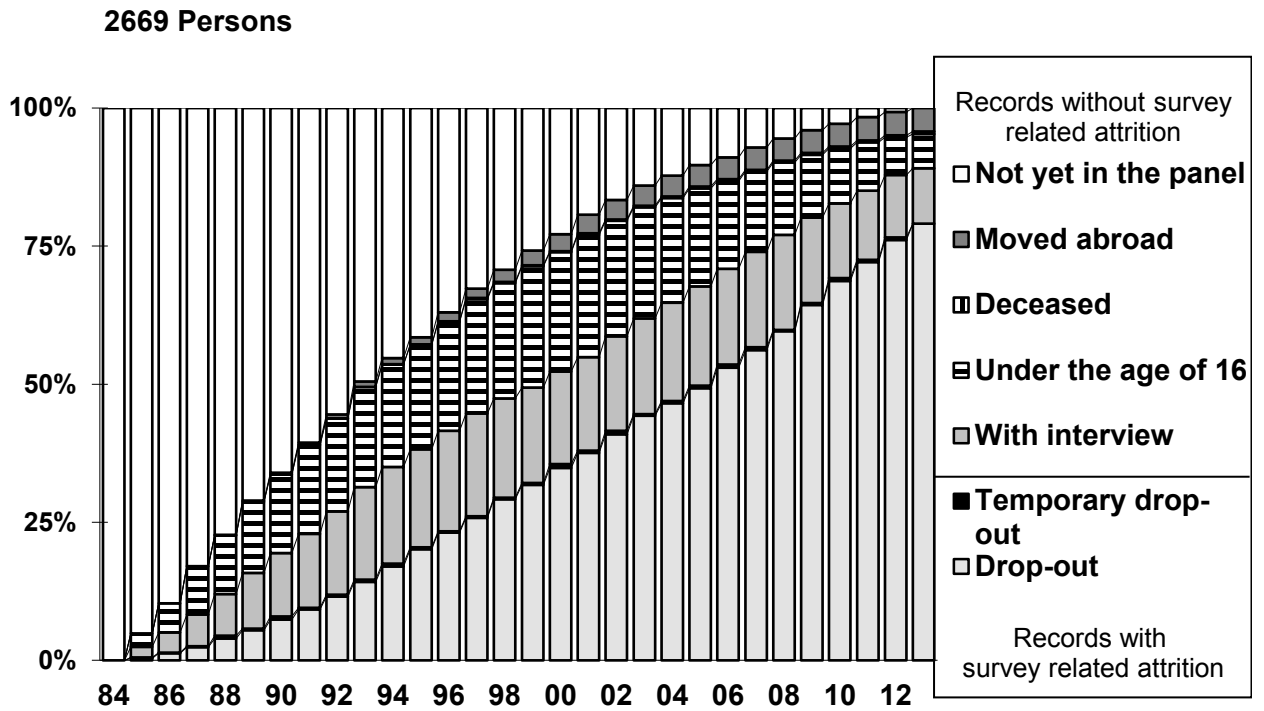


Figure 19: Entrants and their Participation Behavior (Subsample C).

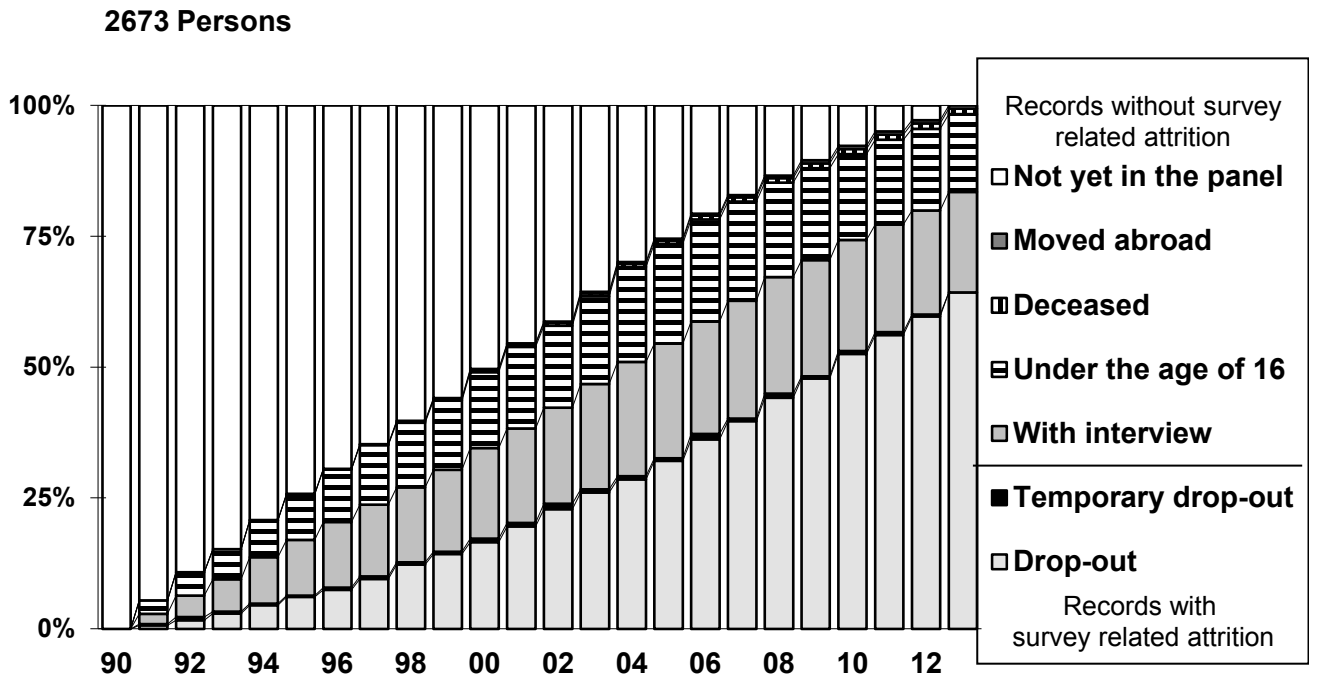


Figure 20: Entrants and their Participation Behavior (Subsample D).

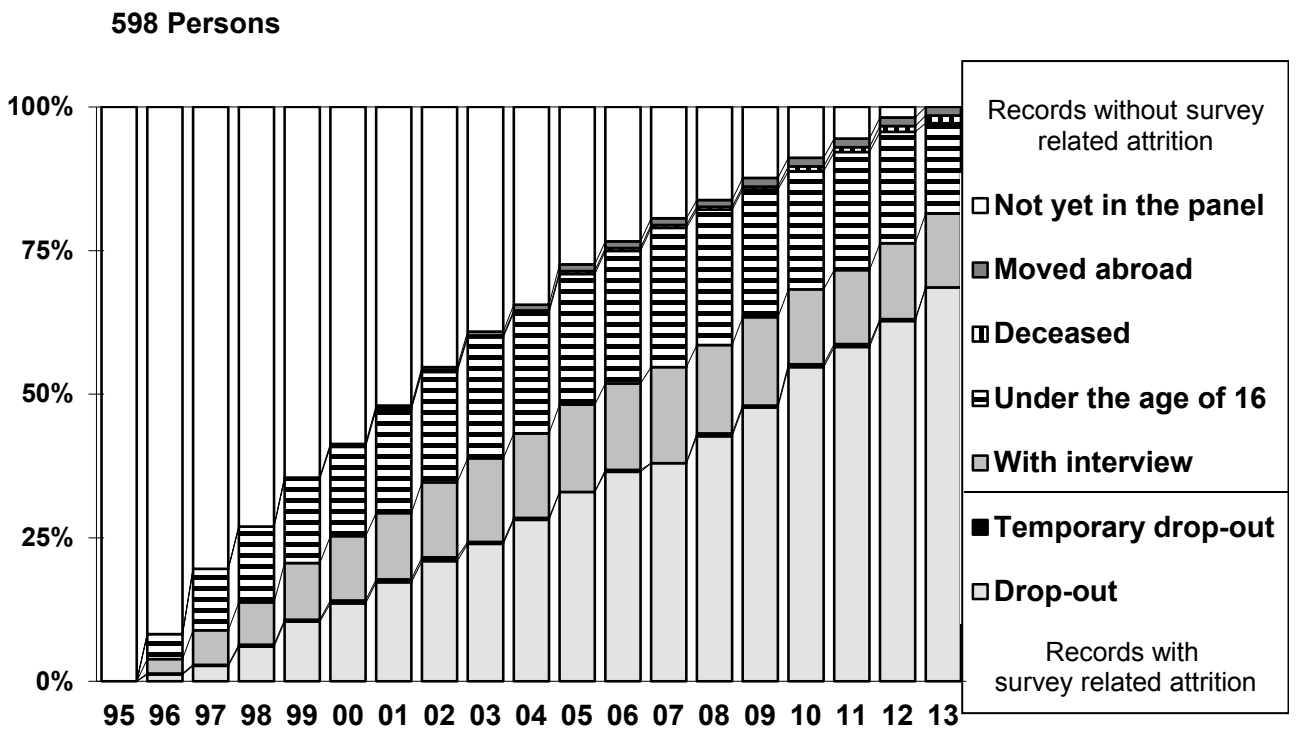


Figure 21: Entrants and their Participation Behavior (Subsample E).

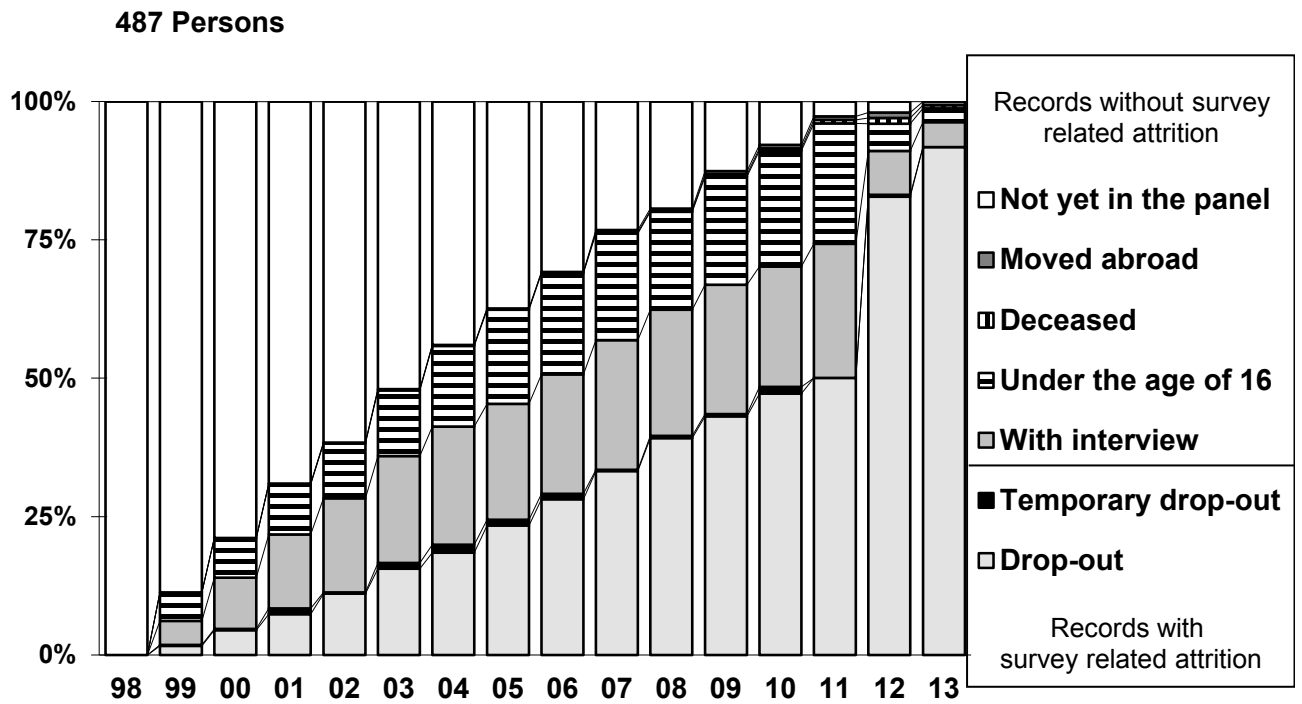


Figure 22: Entrants and their Participation Behavior (Subsample F).

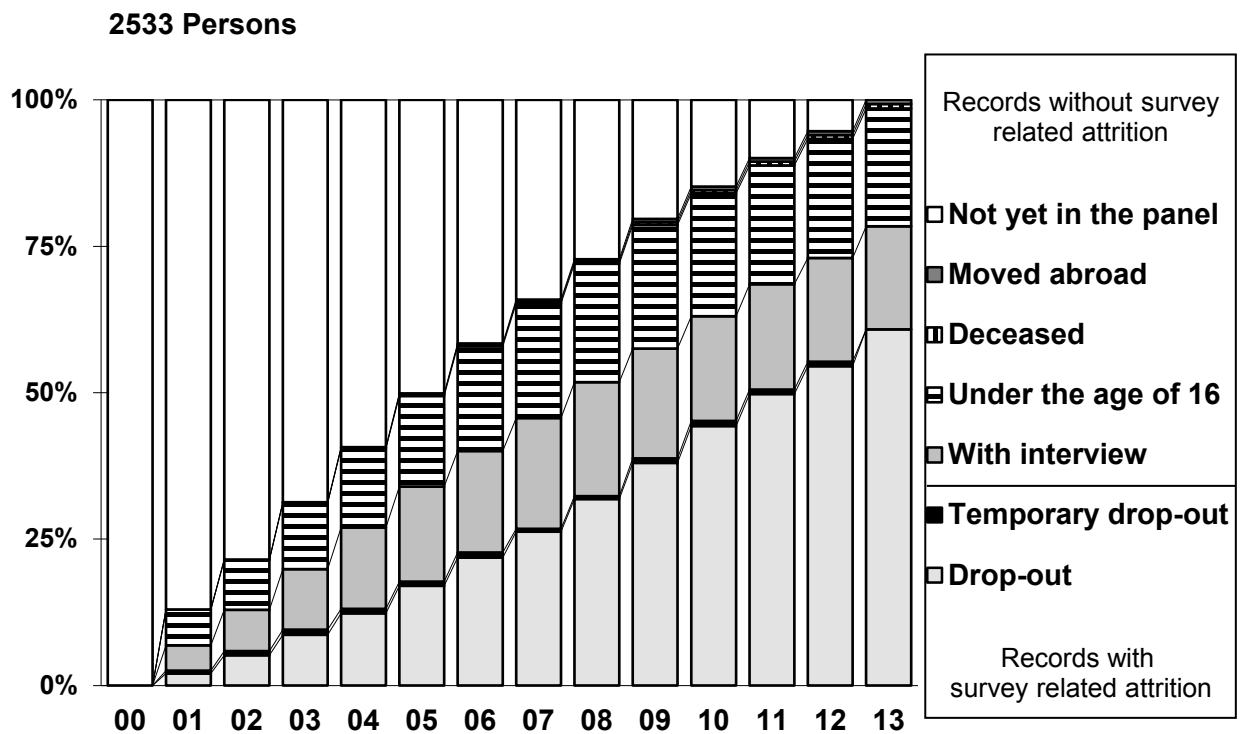


Figure 23: Entrants and their Participation Behavior (Subsample G).

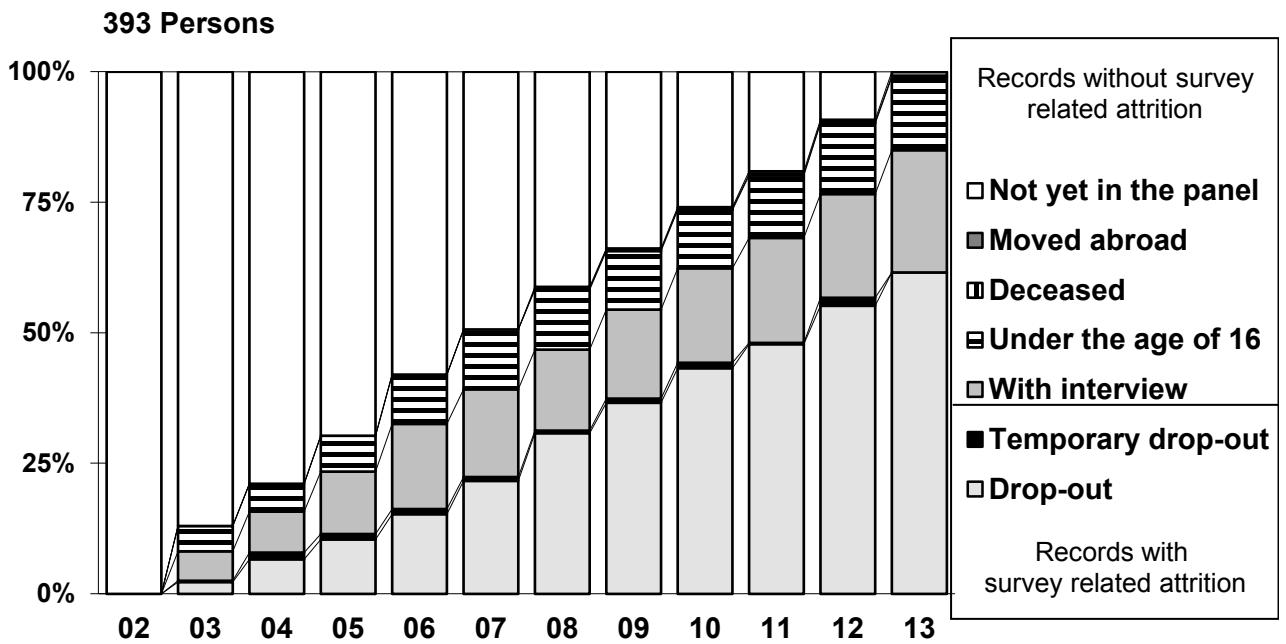
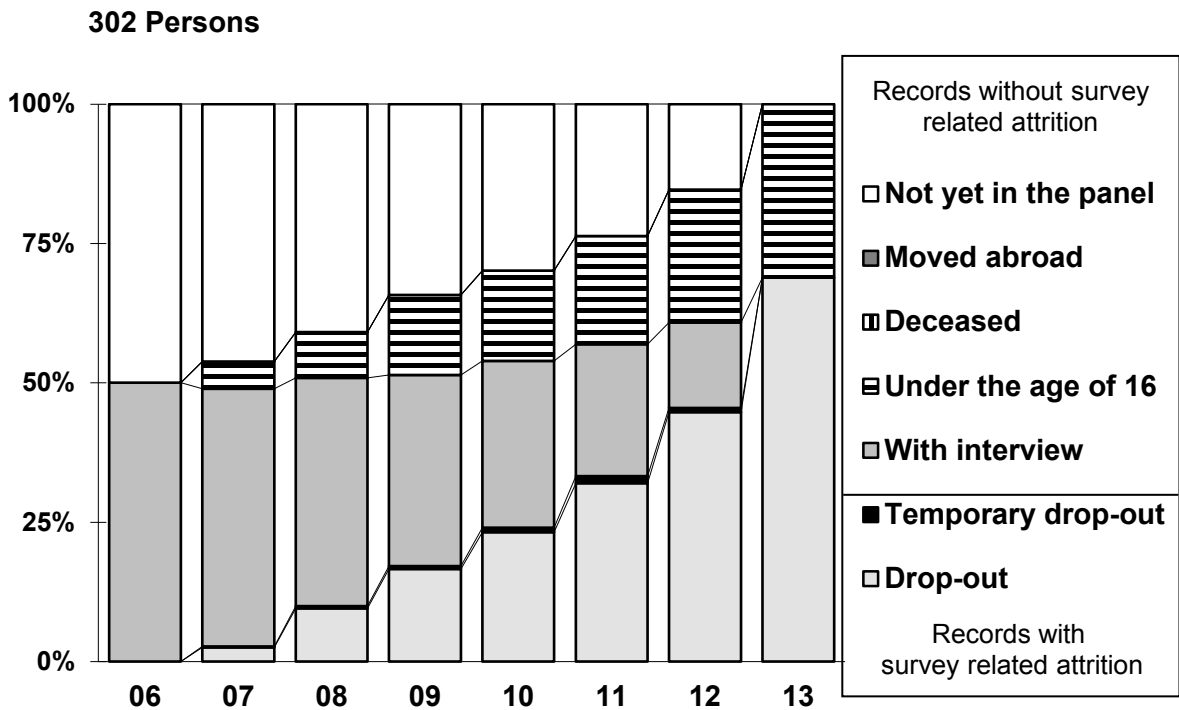


Figure 24: Entrants and their Participation Behavior (Subsample H).



2.4 The Risk of Survey-Related Panel Attrition

The following figures display Kaplan-Meier estimates of the risk of survey related attrition (unsuccessful follow-up and refusal) of the net sample of first-wave respondents thereby ignoring survey unrelated exits (moves abroad and deaths). These figures stratify the drop-out risk in different groups of the sample defined by respondents' sample membership (Figures 25, 26, and 27) and some basic socio-demographic characteristics measured in the year of sampling, such as age, occupation, income, and education (Figures 28 through 31). These unweighted figures show in general only moderate differences in the risk of survey related attrition between groups of the sample. Among the older samples A through C (Figure 25), for instance, first-wave respondents from sample B have a somewhat lower probability of remaining in the survey than respondents from sample A and C. In the more recent samples D through K (Figures 26 and 27), first-wave respondents from sample H have a somewhat lower probability of remaining in the survey than respondents from sample F. The latter in turn, have a lower probability of remaining in the survey than respondents from sample G.

| | |
|--|----|
| Figure 25: Successful Re-Interviewing of First-Wave Respondents by Subsamples A, B, C. Kaplan-Meier Estimates of Survey-Related Attrition Ignoring Deaths and Moves Abroad..... | 24 |
| Figure 26: Successful Re-Interviewing of First-Wave Respondents by Subsamples D, E, F. Kaplan-Meier Estimates of Survey-Related Attrition Ignoring Deaths and Moves Abroad..... | 24 |
| Figure 27: Successful Re-Interviewing of First-Wave Respondents by Subsamples G, H, J and K. Kaplan-Meier Estimates of Survey-Related Attrition Ignoring Deaths and Moves Abroad..... | 25 |
| Figure 28: Successful Re-Interviewing of All First-Wave Respondents by Age Categories. Kaplan-Meier Estimates of Survey-Related Attrition Ignoring Deaths and Moves Abroad..... | 25 |
| Figure 29: Successful Re-Interviewing of All First-Wave Respondents by Occupation. Kaplan-Meier Estimates of Survey-Related Attrition Ignoring Deaths and Moves Abroad. | 26 |
| Figure 30: Successful Re-Interviewing of All First-Wave Respondents by Income Quintiles. Kaplan-Meier Estimates of Survey-Related Attrition Ignoring Deaths and Moves Abroad..... | 26 |
| Figure 31: Successful Re-Interviewing of All First-Wave Respondents by Education. Kaplan-Meier Estimates of Survey-Related Attrition Ignoring Deaths and Moves Abroad. | 27 |

Figure 25: **Successful Re-Interviewing of First-Wave Respondents by Subsamples A, B, C. Kaplan-Meier Estimates of Survey-Related Attrition Ignoring Deaths and Moves Abroad.**

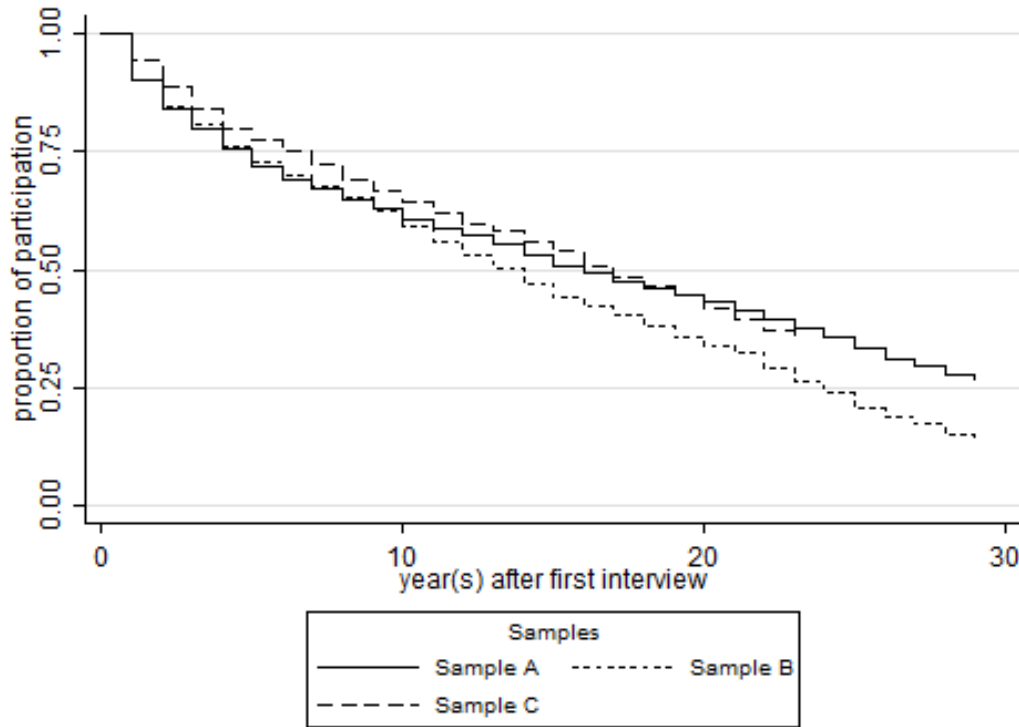


Figure 26: **Successful Re-Interviewing of First-Wave Respondents by Subsamples D, E, F. Kaplan-Meier Estimates of Survey-Related Attrition Ignoring Deaths and Moves Abroad.**

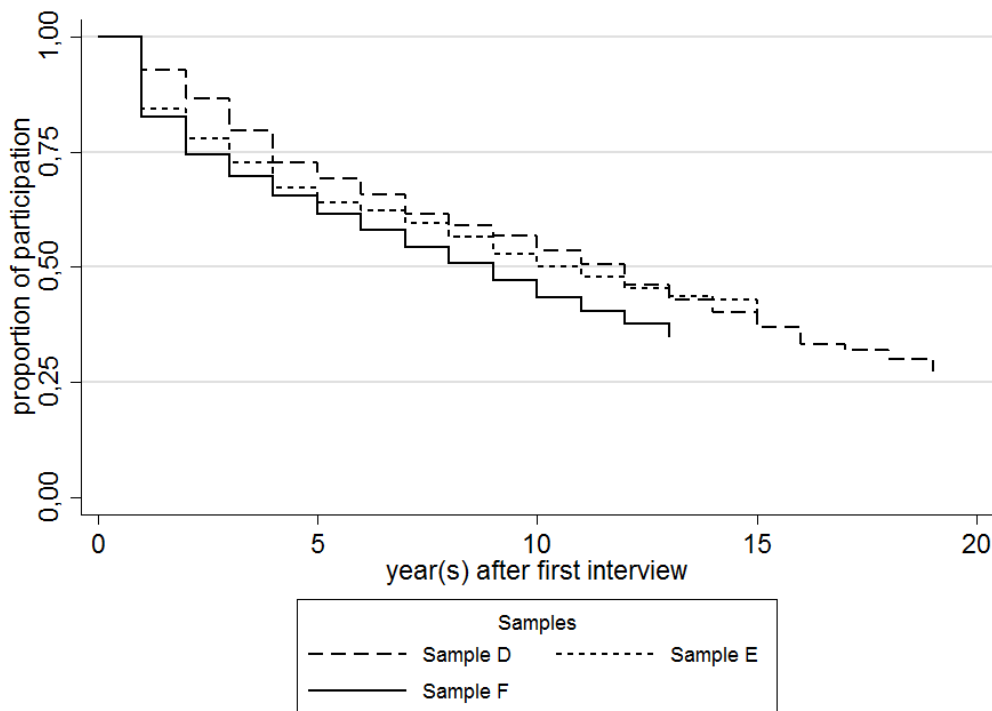


Figure 27: **Successful Re-Interviewing of First-Wave Respondents by Subsamples G, H, J and K. Kaplan-Meier Estimates of Survey-Related Attrition Ignoring Deaths and Moves Abroad.**

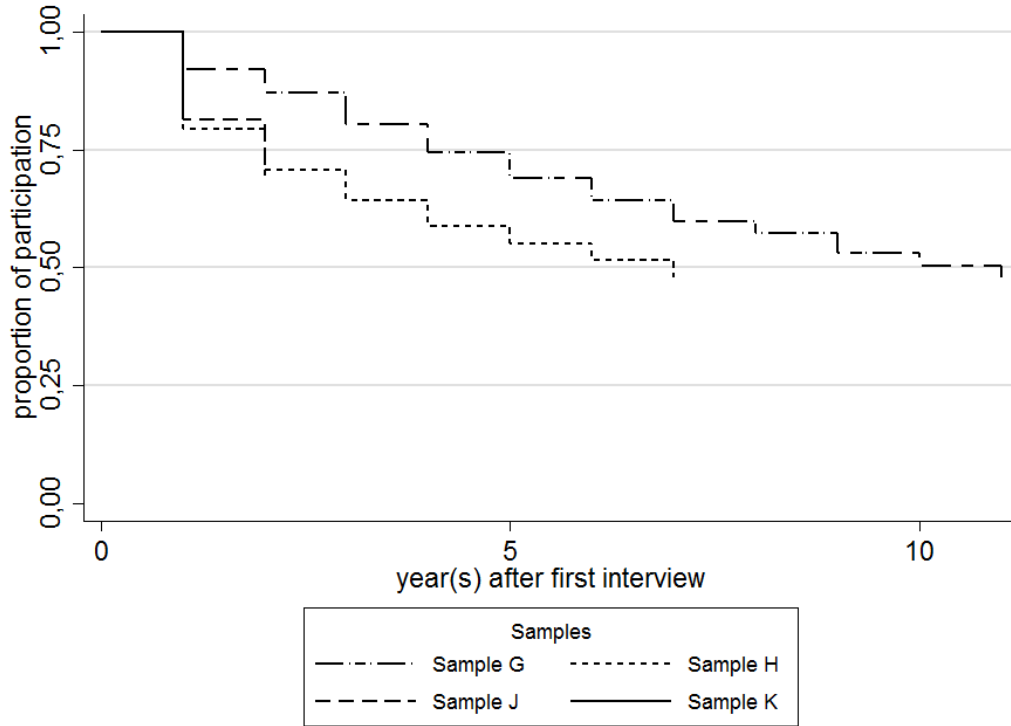


Figure 28: **Successful Re-Interviewing of All First-Wave Respondents by Age Categories. Kaplan-Meier Estimates of Survey-Related Attrition Ignoring Deaths and Moves Abroad.**

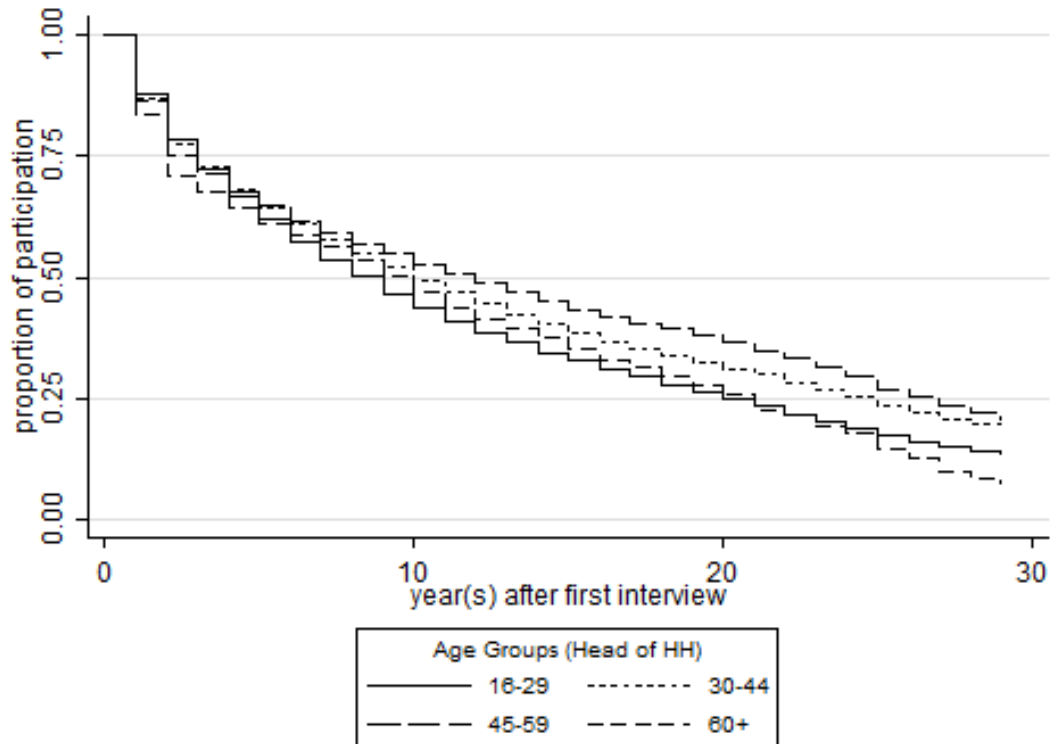


Figure 29: Successful Re-Interviewing of All First-Wave Respondents by Occupation. Kaplan-Meier Estimates of Survey-Related Attrition Ignoring Deaths and Moves Abroad.

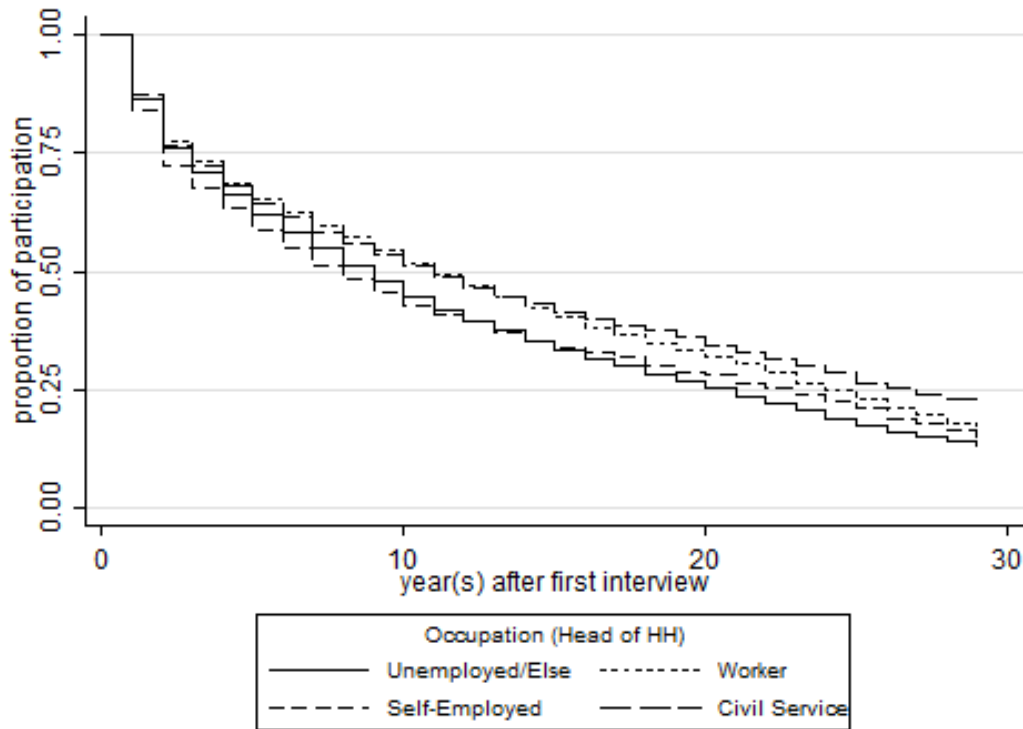


Figure 30: Successful Re-Interviewing of All First-Wave Respondents by Income Quintiles. Kaplan-Meier Estimates of Survey-Related Attrition Ignoring Deaths and Moves Abroad.

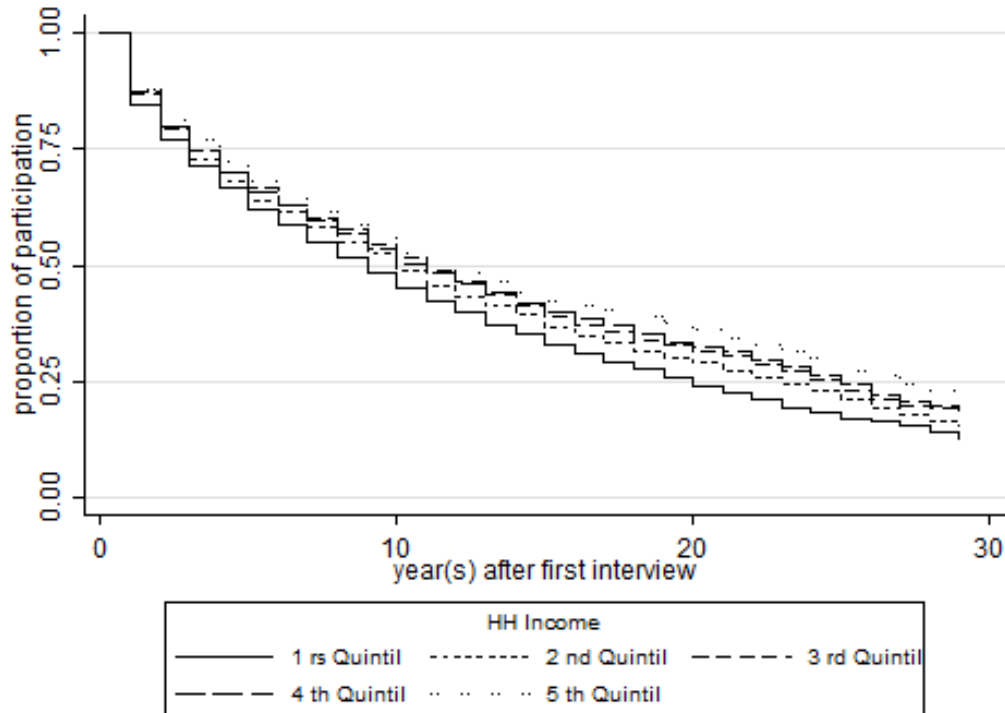
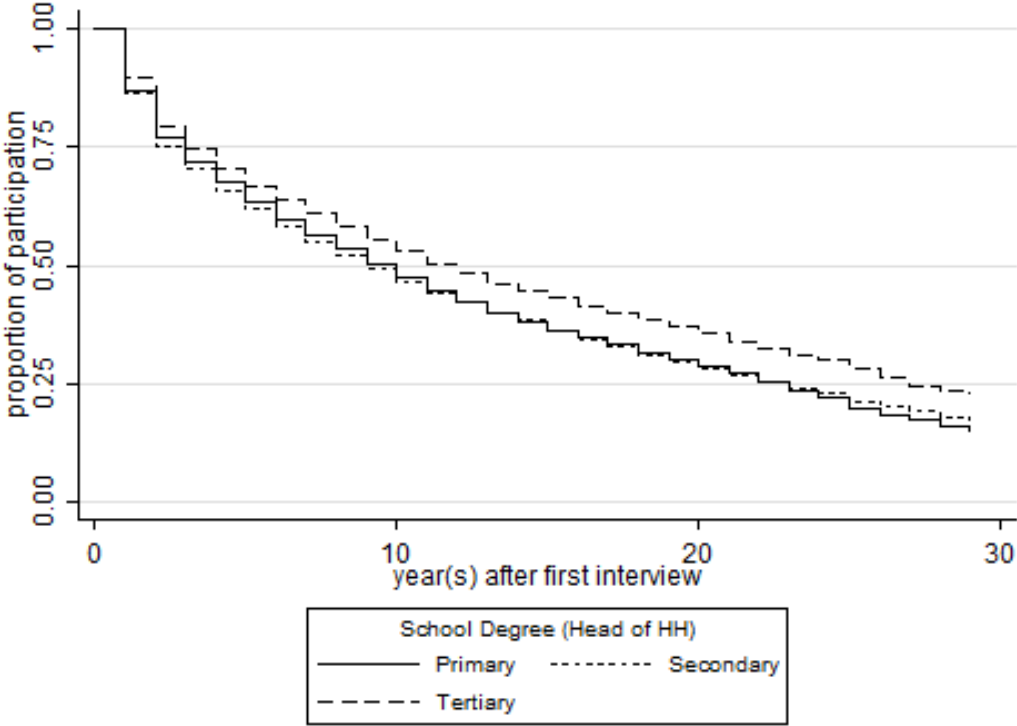


Figure 31: Successful Re-Interviewing of All First-Wave Respondents by Education. Kaplan-Meier Estimates of Survey-Related Attrition Ignoring Deaths and Moves Abroad.



3 Panel Attrition Due to Unsuccessful Follow-Ups

In each panel wave, the first step in successful re-interviewing is the relocation of the households of the preceding wave. The fieldwork organization of the SOEP, TNS Infratest, identifies whether (a) a household still lives at the old address, (b) an entire household has moved or all household members have died, (c) all household members have left the sampling area, and (d) all household members have returned to an existing panel household.

3.1 The Frequency of Successful Follow-Ups

Table 1 and Table 2 display the number of households of the previous waves that need to be re-contacted and the relative frequency of successful follow-ups in subsamples A through K and waves 1985 through 2013. The re-contact rates refer to all households of the previous wave that still exist in the sampling area plus split-off households. A contact is regarded as successful if the interviewer documented a completed interview or refusal in the address protocol. Moreover, if former household members returned to an existing panel household, this is classified as a successful follow-up.

Table 1: The Frequency of Households to be Re-Contacted and the Relative Proportion of Successful Follow-Ups through Subsamples A to E by Year.

| | Sample A | | Sample B | | Sample C | | Sample D | | Sample E | |
|-------------|----------|------|----------|------|----------|------|----------|------|----------|------|
| | n | % | n | % | n | % | n | % | n | % |
| 1985 | 4681 | 98.5 | 1370 | 96.9 | | | | | | |
| 1986 | 4486 | 99.0 | 1325 | 97.4 | | | | | | |
| 1987 | 4232 | 99.1 | 1220 | 98.7 | | | | | | |
| 1988 | 4140 | 99.2 | 1191 | 99.1 | | | | | | |
| 1989 | 3984 | 99.1 | 1157 | 99.1 | | | | | | |
| 1990 | 3902 | 99.2 | 1124 | 98.9 | | | | | | |
| 1991 | 3860 | 99.5 | 1151 | 99.3 | 2246 | 98.5 | | | | |
| 1992 | 3845 | 99.7 | 1153 | 99.2 | 2304 | 99.5 | | | | |
| 1993 | 3867 | 99.3 | 1172 | 98.7 | 2227 | 99.1 | | | | |
| 1994 | 3849 | 99.3 | 1150 | 99.1 | 2136 | 99.4 | | | | |
| 1995 | 3784 | 99.5 | 1108 | 99.0 | 2113 | 99.6 | | | | |
| 1996 | 3747 | 99.7 | 1069 | 99.3 | 2104 | 99.5 | 544 | 99.6 | | |
| 1997 | 3688 | 99.6 | 1038 | 99.1 | 2091 | 99.5 | 542 | 99.3 | | |
| 1998 | 3667 | 99.4 | 1019 | 99.4 | 2081 | 99.4 | 498 | 99.4 | | |
| 1999 | 3631 | 99.6 | 975 | 99.4 | 2041 | 99.7 | 529 | 99.1 | 1100 | 99.5 |
| 2000 | 3549 | 99.6 | 934 | 99.5 | 2028 | 99.6 | 467 | 99.8 | 968 | 99.2 |
| 2001 | 3463 | 99.6 | 904 | 99.5 | 2036 | 99.7 | 454 | 99.1 | 922 | 99.1 |
| 2002 | 3406 | 99.7 | 877 | 99.1 | 2010 | 99.5 | 450 | 99.8 | 875 | 99.4 |
| 2003 | 3330 | 99.6 | 840 | 99.6 | 1982 | 99.6 | 434 | 99.5 | 834 | 99.3 |
| 2004 | 3260 | 99.8 | 803 | 99.6 | 1962 | 99.6 | 436 | 99.8 | 797 | 99.7 |
| 2005 | 3220 | 99.8 | 779 | 99.4 | 1959 | 99.7 | 429 | 99.3 | 783 | 99.1 |
| 2006 | 3138 | 99.7 | 770 | 99.6 | 1941 | 99.4 | 425 | 98.8 | 775 | 99.1 |
| 2007 | 3000 | 99.7 | 725 | 99.5 | 1834 | 99.9 | 387 | 99.5 | 727 | 99.7 |
| 2008 | 2856 | 99.7 | 676 | 99.1 | 1767 | 99.5 | 372 | 99.4 | 680 | 99.7 |
| 2009 | 2730 | 99.7 | 620 | 99.2 | 1695 | 99.8 | 351 | 99.7 | 636 | 100 |
| 2010 | 2570 | 99.8 | 548 | 99.3 | 1627 | 100 | 334 | 99.6 | 605 | 99.8 |
| 2011 | 2421 | 99.8 | 495 | 99.0 | 1541 | 99.8 | 302 | 99.3 | 589 | 100 |
| 2012 | 2289 | 99.8 | 440 | 99.7 | 1466 | 99.9 | 286 | 100 | 116 | 99.1 |
| 2013 | 2180 | 99.6 | 393 | 99.2 | 1417 | 99.7 | 269 | 99.2 | 98 | 100 |

n = Number of households to be recontacted

% = Percentage of households with successful recontact

Table 2: The Frequency of Households to be Re-Contacted and the Relative Proportion of Successful Follow-Ups through Subsamples F to K by Year.

| | Sample F | | Sample G | | Sample H | | Sample J | | Sample K | |
|-------------|----------|------|----------|------|----------|------|----------|------|----------|------|
| | n | % | n | % | n | % | n | % | n | % |
| 2001 | 6172 | 99.0 | | | | | | | | |
| 2002 | 5451 | 99.5 | | | | | | | | |
| 2003 | 4965 | 99.7 | 1056 | 99.1 | | | | | | |
| 2004 | 4736 | 99.6 | 1010 | 99.7 | | | | | | |
| 2005 | 4577 | 99.7 | 1001 | 99.7 | | | | | | |
| 2006 | 4401 | 99.3 | 995 | 99.5 | | | | | | |
| 2007 | 4157 | 99.5 | 933 | 99.3 | 1530 | 99.5 | | | | |
| 2008 | 3962 | 99.4 | 904 | 99.6 | 1326 | 99.6 | | | | |
| 2009 | 3760 | 99.6 | 870 | 99.5 | 1145 | 99.7 | | | | |
| 2010 | 3538 | 99.5 | 826 | 99.9 | 1059 | 99.5 | | | | |
| 2011 | 3318 | 99.6 | 797 | 99.6 | 992 | 99.5 | | | | |
| 2012 | 3076 | 99.9 | 774 | 99.7 | 928 | 99.9 | 3204 | 99.2 | | |
| 2013 | 2881 | 99.7 | 733 | 99.6 | 877 | 99.5 | 2871 | 99.5 | 1565 | 99.0 |

n = Number of households to be recontacted

% = Percentage of households with successful recontact

3.2 Predicting the Probability of Successful vs. Unsuccessful Follow-Ups in the Year 2013

Based on the household and interview characteristics measured in 2012, we aim at predicting the probability of re-contacting a household relative to unsuccessful follow-up in 2013. Among a very large number of regressors that we tested in preliminary analyses, we identified a smaller number of variables that exert a robust effect on the probability of successful follow-ups ($p < 0.05$). Table 3 describes the regressors and Table 4 reports the subsample-specific estimates of logit models of the probability of re-contacting a household relative to unsuccessful follow-up.

Note that the estimates of regression models of the previous waves 1985 through 2012 are due to space restrictions not reported in the present data documentation, but can be obtained from previous attrition documentations.

Table 3: Definition of the Regressors of the Logit Model of Unsuccessful Follow-Ups.

| Variable | Label | Value |
|----------------------------------|--|-------|
| Interview Characteristics | | |
| Phone Unknown | Telephone Number Undisclosed | 0/1 |
| New HH | HH is New in SOEP | 0/1 |
| Move HH | HH Move | 0/1 |
| Separation | Move-out due to Separation in Last Wave | 0/1 |
| Demographics and Health | | |
| Under 12 | Children younger than 12 in HH | 0/1 |
| Montage | At Least one Person in HH has Alternating Place of Work | 0/1 |
| Younger than 25 | Head of HH is Younger than 25 | 0/1 |
| Smoker | At Least one Person in HH Smokes | 0/1 |
| Region | | |
| High AFD Share of Vote | HH Located in Area of High Share of Voting "AFD" | 0/1 |
| High Share Eastern EU | HH in Area with High Share of Eastern EU or Late Repatriates | 0/1 |

Table 3: **Definition of the Regressors of the Logit Model of Unsuccessful Follow-Ups.**

| Variable | Label | Value |
|---|---|--------------|
| Financial Situation, Real Estate and Insurance | | |
| Non-Working | Head of HHH is Non-working | 0/1 |
| Assets | Head of HH has no assets | 0/1 |
| Personality and Well-Being | | |
| Strong Political Interest | Head of HH has High or very High Political Interest | 0/1 |
| Anxious | Head of HH is often anxious | 0/1 |

Table 4: Estimates of Logit Models of the Probability of Re-Contacting a Household (Relative to Unsuccessful Follow-Up) in 2013.

| | Sample A | Sample B | Sample C | Sample D | Sample E | Sample F | Sample G | Sample H | Sample J | Sample K |
|--|-------------|-------------|-------------|-------------|-------------|-------------|-------------|-------------|-------------|-------------|
| Intercept | 2.53*** | 1.58*** | 1.87*** | 1.59*** | | 2.10*** | 1.70*** | 1.93*** | 2.36*** | 4.30*** |
| <i><u>Interview Characteristics</u></i> | | | | | | | | | | |
| Phone Unknown | | | | | | -0.38** | | | -0.91*** | |
| New HH | -0.65*** | | | | | | | | -0.98*** | -2.40*** |
| Move HH | | | -0.70*** | | | -0.69*** | | -0.86*** | -0.64** | |
| Separation | | | | | | | | | | -2.36*** |
| <i><u>Demographics and Health</u></i> | | | | | | | | | | |
| Under 12 | -0.51** | | | | | | | | | |
| Montage | | | | | | | | -0.63** | | |
| Younger than 25 | | | | | | | | | | -1.05** |
| Smoker | | | | | | | | | | -0.77** |
| <i><u>Region</u></i> | | | | | | | | | | |
| High AFD Share | -0.46** | | | | | | | | | |
| High East. EU | | | | | | -0.45*** | | | | |
| <i><u>Financial Situation, Real Estate and Insurance</u></i> | | | | | | | | | | |
| Non-Working | -0.44** | | | | | | | | | |
| Assets | -0.57*** | | | | | | | | | |
| <i><u>Personality and Well-Being</u></i> | | | | | | | | | | |
| Political Interest | | | | | | | | | | -1.04*** |
| Anxious | | | | | | | | | | -1.11** |
| Log Likelihood | -35.71 | -17.61 | -23.49 | -11.80 | | -39.91 | -19.49 | -18.68 | -52.58 | -32.52 |

Note. *** $p < 0.01$; ** $p < 0.05$; * $p < 0.10$

4 Panel Attrition Due to Refusals

In each panel wave, the second step in successful re-interviewing after relocating households from the preceding wave is to obtain each household's confirmation of willingness to participate in the survey. We define successful re-interviewing relative only to survey-related panel attrition, such as refusals, and ignore survey-unrelated attrition, such as deaths, and moves abroad, to generate the longitudinal weights.

4.1 The Frequency of Participation

Table 5 and Table 6 display the participation rates due to refusal by sub-sample and wave. In reverse one can derive the corresponding drop-out rates. Note that we did not distinguish between various types of refusals such as unconditional refusals, refusals due to lack of time, or health problems, etc.

Table 5: The Frequency of Re-Contacted Households and the Relative Proportion of Participation in Subsamples A through E by Year.

| | Sample A | | Sample B | | Sample C | | Sample D | | Sample E | |
|------|----------|------|----------|------|----------|------|----------|------|----------|------|
| | n | % | n | % | n | % | n | % | n | % |
| 1985 | 4611 | 89.8 | 1326 | 89.1 | | | | | | |
| 1986 | 4442 | 89.2 | 1290 | 87.4 | | | | | | |
| 1987 | 4194 | 93.2 | 1204 | 92.7 | | | | | | |
| 1988 | 4105 | 91.1 | 1180 | 90.8 | | | | | | |
| 1989 | 3949 | 92.4 | 1146 | 91.0 | | | | | | |
| 1990 | 3871 | 93.3 | 1111 | 92.5 | | | | | | |
| 1991 | 3842 | 94.0 | 1143 | 92.4 | 2213 | 91.7 | | | | |
| 1992 | 3833 | 93.5 | 1144 | 92.7 | 2290 | 88.2 | | | | |
| 1993 | 3838 | 93.9 | 1156 | 92.0 | 2208 | 89.2 | | | | |
| 1994 | 3821 | 93.6 | 1139 | 89.8 | 2122 | 92.3 | | | | |
| 1995 | 3766 | 93.6 | 1097 | 89.5 | 2101 | 92.2 | 634 | 82.3 | | |
| 1996 | 3734 | 93.3 | 1061 | 90.5 | 2092 | 93.3 | 542 | 91.9 | | |
| 1997 | 3674 | 94.1 | 1029 | 90.5 | 2076 | 93.6 | 537 | 89.2 | | |
| 1998 | 3645 | 92.9 | 1013 | 88.6 | 2066 | 91.3 | 523 | 84.3 | | |
| 1999 | 3616 | 92.0 | 969 | 88.5 | 2030 | 93.3 | 495 | 85.9 | 1084 | 81.7 |
| 2000 | 3535 | 91.7 | 929 | 88.3 | 2018 | 93.1 | 466 | 91.2 | 959 | 87.8 |
| 2001 | 3448 | 91.9 | 899 | 90.0 | 2028 | 91.2 | 450 | 88.4 | 913 | 88.8 |
| 2002 | 3396 | 92.0 | 869 | 88.1 | 1996 | 91.1 | 449 | 89.5 | 868 | 89.1 |
| 2003 | 3318 | 92.6 | 837 | 88.6 | 1974 | 91.5 | 432 | 92.4 | 828 | 89.9 |
| 2004 | 3253 | 92.5 | 800 | 89.3 | 1955 | 92.7 | 435 | 89.2 | 795 | 92.1 |
| 2005 | 3214 | 91.4 | 774 | 90.2 | 1954 | 90.6 | 426 | 89.0 | 782 | 90.3 |
| 2006 | 3130 | 90.1 | 767 | 85.4 | 1930 | 89.0 | 420 | 85.7 | 768 | 89.3 |
| 2007 | 2992 | 91.0 | 721 | 85.2 | 1832 | 90.3 | 385 | 89.6 | 725 | 89.2 |
| 2008 | 2850 | 90.7 | 671 | 84.9 | 1759 | 90.5 | 370 | 88.6 | 678 | 88.8 |
| 2009 | 2723 | 89.0 | 616 | 81.2 | 1693 | 90.7 | 350 | 87.4 | 636 | 90.3 |
| 2010 | 2565 | 87.5 | 545 | 80.9 | 1627 | 88.3 | 333 | 83.5 | 604 | 91.6 |
| 2011 | 2417 | 88.9 | 491 | 79.6 | 1538 | 88.1 | 300 | 88.7 | 589 | 92.5 |
| 2012 | 2285 | 89.0 | 439 | 78.8 | 1456 | 89.6 | 286 | 87.8 | 115 | 80.0 |
| 2013 | 2172 | 89.7 | 390 | 82.3 | 1413 | 88.5 | 267 | 86.9 | 98 | 83.7 |

n = Number of re-contacted households

% = Percentage of households that participated

Table 6: The Frequency of Re-Contacted Households and the Relative Proportion of Participation in Subsamples F through K by Year.

| | Sample F | | Sample G | | Sample H | | Sample J | | Sample K | |
|--|----------|------|----------|------|---|------|----------|------|----------|------|
| | n | % | n | % | n | % | n | % | n | % |
| 2001 | 6109 | 80.4 | | | | | | | | |
| 2002 | 5420 | 84.6 | | | | | | | | |
| 2003 | 4951 | 88.6 | 1047 | 87.0 | | | | | | |
| 2004 | 4719 | 89.7 | 1007 | 89.8 | | | | | | |
| 2005 | 4564 | 89.2 | 998 | 88.1 | | | | | | |
| 2006 | 4370 | 89.1 | 990 | 86.8 | | | | | | |
| 2007 | 4138 | 89.3 | 926 | 89.0 | 1523 | 78.0 | | | | |
| 2008 | 3939 | 89.2 | 901 | 87.3 | 1321 | 81.9 | | | | |
| 2009 | 3746 | 88.2 | 866 | 87.4 | 1142 | 87.2 | | | | |
| 2010 | 3523 | 86.7 | 825 | 90.1 | 1054 | 86.6 | | | | |
| 2011 | 3307 | 87.2 | 794 | 88.9 | 988 | 86.8 | | | | |
| 2012 | 3073 | 87.9 | 772 | 89.0 | 927 | 88.2 | 3178 | 80.4 | | |
| 2013 | 2873 | 89.3 | 730 | 92.7 | 873 | 89.7 | 2857 | 80.7 | 1549 | 82.7 |
| n = Number of re-contacted households | | | | | % = Percentage of households that participated | | | | | |

4.2 Predicting the Probability of Re-Interviewing versus Refusal in the Year 2013

Based on the household and interview characteristics measured in 2012, and some regional information measured in 2013, we aim at predicting the probability of agreement vs. refusal to participate in the survey by the households that were re-contacted in 2013. The individual attributes refer in many cases to the head of the household in the previous wave, but for split-off households the attributes refer to the person who moved out of the panel household (in the case of several persons, the first person mentioned in the address protocol). In many other cases, personal information are aggregated within the households, for instance, rare events, such as acute medical conditions.

As in the case of predicting successful follow-ups, we use only model specifications where all included regressors are significantly different from zero. The definition of the regressors is given in Table 7. Table 8 reports the subsample-specific estimates

of logit models of the probability of participating relative to refusal. Note that the estimates of regression models of the previous waves 1985 through 2012 are not reported in the present data documentation due to space restrictions, but can be obtained from previous attrition reports.

Table 7: Definition of the Regressors of the Logit Model of Refusal.

| Variable | Label | Value |
|----------------------------------|---|-------|
| Interview Characteristics | | |
| Original Sample Member | Head of HH is Original Sample Member | 0/1 |
| Freshman | Head of HH for Less Than Three Waves in SOEP | 0/1 |
| New HH | HH is New in SOEP | 0/1 |
| Partial Unit Nonresponse | Person(s) in HH did not Participate | 0/1 |
| Temporary Drop-Out | Temporary Drop-Out of HH in Previous Year | 0/1 |
| Email Known | Email Address Disclosed | 0/1 |
| Phone Unknown | Telephone Number Undisclosed | 0/1 |
| Change in Interview Mode | Change in Interview Mode Between Last Waves | 0/1 |
| Change of Interviewer | Change of Interviewer Between Last Waves | 0/1 |
| Real. Related HH | Related HH Realized | 0/1 |
| Interviewer Related HH | Same Interviewer in Related HH | 0/1 |
| Add. Questionnaire Muki | Additional Questionnaire Answered (Muki) | 0/1 |
| Add. Questionnaire Grip | Additional Questionnaire Answered (Grip) | 0/1 |
| Lee-Study | Participated at LEE-Study, at least one Address Given | 0/1 |
| VdB-Study Participation | HH Participated at van-den-Berg-Study | 0/1 |
| VdB-Study Refusal | HH Refused to Participate at van-den-Berg-Study | 0/1 |
| Short Interview | Interview Duration Short | 0/1 |
| Late Interview | Interview Done Later than May | 0/1 |
| High Item Nonresponse HH | High Item Nonresponse in HH Questionnaire | 0/1 |
| High Item Nonresponse P | High Item Nonresponse in Person Questionnaire of Head of HH | 0/1 |
| Subsample B4 | HH from Sample B, Italian Head of HH | 0/1 |

Table 7: Definition of the Regressors of the Logit Model of Refusal.

| Variable | Label | Value |
|--|---|-------|
| Subsample F2 | HH from F2 ISOEP, Additional Foreigner Enumeration | 0/1 |
| <i>Demographics and Health</i> | | |
| Age 25-34 | Head of HH between 25 and 34 Years | 0/1 |
| Age 55-64 | Head of HH between 55 and 64 Years | 0/1 |
| Age 65-74 | Head of HH between 65 and 74 Years | 0/1 |
| Older than 75 | Head of HH is Older than 75 | 0/1 |
| Retiree | At Least one Retiree in HH | 0/1 |
| Single HH | One Person Living in HH | 0/1 |
| Divorced | Head of HH Divorced | 0/1 |
| Widowed | Head of HH Widowed | 0/1 |
| Moving In | Current Moving In HH | 0/1 |
| Previous Moving In | Moving In HH in Previous Year | 0/1 |
| No Previous Partner | No Married or Unmarried Couple Previous Year in HH | 0/1 |
| <i>Health Situation</i> | | |
| Obesity | At Least one Person in HH Is Obese | 0/1 |
| Isolated | At Least one Person in HH Is Limited Socially due to Health | 0/1 |
| Care | At Least one Person in HH Is in Need of Care | 0/1 |
| Chain Smoker | At Least one Person in HH Is Chain Smoker | 0/1 |
| Smoker | At Least one Person in HH Smokes | 0/1 |
| <i>Financial Situation, Real Estate and Insurance</i> | | |
| Subtenant | Subtenant of Dwelling | 0/1 |
| Building-Saving | Head of HH Does little Building-Saving (first Tercile) | 0/1 |
| Debts | Head of HH Highly indebted (third Tercile) | 0/1 |
| Funds1 | Head of HH Has little funds (first Tercile) | 0/1 |
| Funds2 | Head of HH Has average funds (second Tercile) | 0/1 |
| Life Insurance | Head of HH Has little Life Insurance (first Tercile) | 0/1 |

Table 7: Definition of the Regressors of the Logit Model of Refusal.

| Variable | Label | Value |
|--|--|-------|
| House Owner | Head of HH Is Owner of high priced House (third Tercile) | 0/1 |
| Little Real Estate | Head of HH Has Real Estate below average | 0/1 |
| Much Real Estate | Head of HH Has Real Estate above average | 0/1 |
| Insurance | HH with Many Insurances | 0/1 |
| <i>Work and Education</i> | | |
| White-Collar Worker | Head of HH Is a White-Collar Worker | 0/1 |
| Blue-Collar Worker | Head of HH Is a Blue-Collar Worker | 0/1 |
| Civil Servant | Head of HH Is a Civil Servant | 0/1 |
| Self-Employed | Head of HH Is Self-Employed | 0/1 |
| University Degree | Head of HH Has a University Degree | 0/1 |
| Low Education | Head of HH Has Low Education | 0/1 |
| Management | Head of HH Has Management Functions | 0/1 |
| Other Employment | Head of HH Employed, Neither Management Nor Untrained | 0/1 |
| <i>Personality Traits, Well-Being and Other Characteristics</i> | | |
| Angry | Head of HH Often Angry in Last four Weeks | 0/1 |
| Strong Political Interest | Head of HH Has High or Very High Political Interest | 0/1 |
| Hobbies and Leisure | Head of HH Spends Much Time With Hobbies/Leisure | 0/1 |
| Unhappy | Head of HH Often Not Happy | 0/1 |
| Time Pressure | At Least one Person in HH Often Pressed for Time | 0/1 |
| Risk Willingness | Head of HH Has High Risk Willingness | 0/1 |
| Job Security | Head of HH Worried About Job Security | 0/1 |
| <i>Building, Area, and Region</i> | | |
| Family Area | HH Located in Area with Mostly Families | 0/1 |
| Low Academics | HH Located in Area of Low Academics Rate | 0/1 |
| High Grüne Share of Vote | HH Located in Area of High Share of Voting "Grüne" | 0/1 |
| High AFD Share of Vote | HH Located in Area of High Share of Voting "AFD" | 0/1 |

Table 7: **Definition of the Regressors of the Logit Model of Refusal.**

| Variable | Label | Value |
|------------------------------|--|--------------|
| High SPD Share of Vote | HH Located in Area of High Share of Voting "SPD" | 0/1 |
| Low Purchasing Power | HH in Area with Low of Purchasing-Power (Microm) | 0/1 |
| High Purchasing Power | HH in Area with High of Purchasing-Power (Microm) | 0/1 |
| Depopulation | HH Located in Area of High Depopulation | 0/1 |
| High Share Foreigners | HH in Area with High Share of Foreigners (Microm) | 0/1 |
| High Share Islamic Countries | HH in Area with High Share of People from Islamic Countries | 0/1 |
| High Share Eastern EU | HH in Area with High Share of Eastern EU or Late Repatriates | 0/1 |
| Bavaria | HH Located in Bavaria | 0/1 |
| Rhineland-./Saarland | HH Located in Rhineland-Palatinate/Saarland | 0/1 |
| Baden-Wuerttemberg | HH Located in Baden-Wuerttemberg | 0/1 |
| Hessen | HH Located in Hessen | 0/1 |
| Few Abitur-Graduates | HH Located in Area with Few Abitur-Graduates | 0/1 |
| One Family House | HH Lives in a One or Two Family House | 0/1 |
| Apartment Building | HH Lives in an Apartment Building | 0/1 |

Table 8: Estimates of Logit Models for the Probability of Re-Interviewing a Household (Relative to Refusal) in 2013.

| | Sample A | Sample B | Sample C | Sample D | Sample E | Sample F | Sample G | Sample H | Sample J | Sample K |
|---|-------------|-------------|-------------|-------------|-------------|-------------|-------------|-------------|-------------|-------------|
| Intercept | 0.83*** | 0.92*** | 0.63*** | 1.13*** | 0.99** | 1.13*** | 1.46*** | 1.06*** | 0.67*** | 0.93*** |
| <i>Interview Characteristics</i> | | | | | | | | | | |
| Original Sample Memb. | -0.18*** | -0.83*** | -0.21** | -0.55*** | -0.63** | -0.14** | | | | |
| Freshman | -1.15*** | | | | | -0.74** | | | | |
| New HH | | | | | | -0.34* | | -0.77** | | -0.51** |
| Part. Unit Nonresponse | | | | | | -0.19** | -0.42*** | -0.59*** | -0.35*** | -0.68*** |
| Temporary Drop-Out | -1.06*** | | -1.51*** | | | -1.54*** | -1.58*** | -1.74*** | -1.95*** | |
| Email Known | | | 0.26*** | | | 0.19*** | | | 0.26*** | 0.34*** |
| Phone Unknown | -0.41*** | -0.90*** | -0.29** | | | -0.49*** | | -0.59*** | -0.54*** | -0.66*** |
| Change Interview Mode | | | | | | -0.22** | | | | |
| Change of Interviewer | | | | | | | | | -0.23*** | |
| Temp. Related HH | | | | | | | | | 0.41*** | |
| Interviewer Related HH | 0.24*** | | | | | | | | | |
| Add. Question. Muki | | | | -0.54** | | | | | | |
| Add. Question. Grip | | | 0.20** | | | | | | | |
| Lee-Study | 0.36*** | 0.32** | 0.39*** | | | | | | | |
| VdB-Study Participation | 0.37*** | | | | | 0.34*** | | | 0.32*** | |
| VdB-Study Refusal | | | | | | | | -0.62*** | | |
| Short Interview | | -0.46** | | | | | | | | |
| Late Interview | | | | -0.74** | | | | -0.54*** | | |
| High Item Nonresp. HH | | | | | | | | -0.33** | | |
| High Item Nonresp. P | | | | | | -0.19*** | | | | |
| Subsample B4 | | 0.48** | | | | | | | | |
| Subsample F2 | | | | | | -0.36** | | | | |
| Age 25-34 | | | | | | | | | | -0.29** |
| Age 55-64 | | -0.53** | | | | | | | | |
| Age 65-74 | | | | | | | | 0.36** | | |
| Older than 75 | | | | | | | | | | -0.39*** |
| Retiree | | | 0.22** | | | | | | | |
| Single HH | | | | | | -0.34*** | | | -0.46*** | -0.30*** |

Table 8: Estimates of Logit Models for the Probability of Re-Interviewing a Household (Relative to Refusal) in 2013.

| | Sample A | Sample B | Sample C | Sample D | Sample E | Sample F | Sample G | Sample H | Sample J | Sample K |
|--|-------------|-------------|-------------|-------------|-------------|-------------|-------------|-------------|-------------|-------------|
| Divorced | | | 0.40*** | | | | | | 0.29*** | 0.33*** |
| Widowed | | | | | | 0.25** | | | 0.26** | 0.42*** |
| Moving In | | | | | | | | | -0.51*** | |
| Previous Moving In | | | -0.58** | | | | | | | |
| No Previous Partner | | 0.51*** | | | | 0.32*** | | | 0.38*** | |
| <u>Health Situation</u> | | | | | | | | | | |
| Obesity | 0.17** | | | | | | | | | |
| Isolated | | | | | | | | | | 0.20** |
| Care | -0.36** | | | | | | | | | |
| Chain Smoker | | 0.59** | | | | | | | | |
| Smoker | -0.13** | | | | | | | | | -0.25*** |
| <u>Financial Situation, Real Estate and Insurance</u> | | | | | | | | | | |
| Subtenant | | 0.41** | | | | | | | | |
| Building-Saving | | | | | | | | -0.55*** | | |
| Debts | | | | | | 0.33** | | | | |
| Funds1 | -0.21** | | | | | | | | | |
| Funds2 | | | 0.44*** | | | | | | | |
| Life Insurance | 0.40*** | | | | | | | | | |
| House Owner | | | | | | | 0.28** | | | |
| Little Real Estate | | | | | | | | | 0.36** | |
| Much Real Estate | | | | | | | | | -0.28** | |
| Insurance | | | | | | | -0.30** | | 0.22** | |
| <u>Work and Education</u> | | | | | | | | | | |
| White-Collar Worker | -0.17** | | | | | | | | | |
| Blue-Collar Worker | | | | | | | | | 0.22** | |
| Civil Servant | | | | | | | | -0.73*** | | |
| Self-Employed | | | | | | | | -0.48** | | |
| University Degree | | | | | | | | 0.41*** | | |
| Low Education | | | | | | | | | -0.16*** | |
| Management | 0.35*** | | | | | | | | | |

Table 8: Estimates of Logit Models for the Probability of Re-Interviewing a Household (Relative to Refusal) in 2013.

| | Sample A | Sample B | Sample C | Sample D | Sample E | Sample F | Sample G | Sample H | Sample J | Sample K |
|--|-------------|-------------|-------------|-------------|-------------|-------------|-------------|-------------|-------------|-------------|
| Other Employment | | | -0.21** | | | | | | | |
| <i><u>Personality Traits, Well-Being and Other Characteristics</u></i> | | | | | | | | | | |
| Angry | | | | | | | | | 0.18*** | |
| Strong Political Interest | | | 0.29*** | | | | | | | |
| Hobbies and Leisure | | | | | | | | 0.30** | | |
| Unhappy | | 0.38** | | | | | | | | 0.18** |
| Time Pressure | | | | | | -0.14** | | | -0.14** | |
| Risk Willingness | | 0.47*** | | | | | | 0.41*** | | |
| Job Security | | | | | | | | | | -0.25*** |
| <i><u>Building, Area, and Region</u></i> | | | | | | | | | | |
| Family Area | | | | 0.54** | | | | | | |
| Low Academics | -0.18** | -0.50** | | -0.46** | | | -0.38** | 0.43*** | | -0.25*** |
| H. Grüne Share of Vote | | | | | | | -0.27** | | | |
| H. AFD Share of Vote | | -0.61*** | | | | | | | | |
| H. SPD Share of Vote | | | | | | | | -0.44*** | | |
| Low Purchasing Power | | -0.59*** | | | | | | | | |
| High Purchasing Power | | | | | | | | | | -0.29*** |
| Depopulation | | | | | | -0.20*** | | | | |
| H.Share Foreigners | | | | | | -0.13** | | | | |
| H. Share Islamic C. | 0.25*** | | | | | | | | | |
| H. Share Eastern EU | | | | -0.42** | | | | | | |
| Bavaria | | | | | | | -0.35** | | | |
| Rhineland/Saarland | | | | | | | | | 0.32*** | |
| Baden-Wuerttemb. | -0.44*** | | | | | | | | -0.23*** | |
| Hessen | | | | | | | -0.44** | | | |
| Few Abitur-Grad. | 0.21** | | | | | | | | | |
| One Family House | | | -0.19** | | | | | | | |
| Apartment Building | | | | 0.63** | | | | -0.37** | | |
| Log Likelihood | -586.04 | -136.26 | -409.10 | -83.71 | -40.76 | -767.61 | -156.24 | -203.31 | -1074.6 | -628.46 |

Note. *** p < 0.01; **p < 0.05; * p < 0.10.

5 Summary Statistics of the Derived Longitudinal and Cross-Sectional Weights

Based on the regression models of successful vs. unsuccessful recontacts and agreements vs. refusals to participate, we derive two sets of predicted probabilities, the product of which is the household's "staying probability". The inverse of this probability of staying in the SOEP in 2013 based on characteristics measured in 2012, BDHBLEIB, lends itself as a longitudinal weighting variable correcting for selective attrition between waves 2012 and 2013. Table 9, Table 10 and Table 11 report some sub-sample specific descriptive statistics of the longitudinal weights in each wave.

The product of the cross-sectional weight in 2012, BCHHRF, and the longitudinal weight in 2013, BDHBLEIB, provide the raw data for the cross-sectional weight in 2013. In a final step, the post-stratification of the cross-sectional weights corrects them to meet benchmarks of known marginals of the underlying population in 2013. These are at the household level states (Bundesländer), size of the community, household size, and house ownership. At the person level, SOEP weights are also adjusted to the marginal distributions of age, gender, and nationality (Non/German). With the integration of the latest migrant sample M in 2013, we also consider additional information on the country of origin of respondents and year of migration. Table 12 and Table 13 report sub-sample-specific descriptive statistics of the derived cross-sectional weighting variable BDHHRF and in comparison all previous cross-sectional weights AHHRF through BCHHRF.

Data Documentation 75

References

Table 9: Summary Statistics of the Derived Longitudinal Weights at the Household Level for Subsamples A through D (Percentiles of \$HBLEIB up to Wave 30).

| | sample A | | | | sample B | | | | sample C | | | | sample D | | | |
|-------------|----------|------|------|------|----------|------|------|------|----------|------|------|------|----------|------|------|-----|
| | p10 | p50 | p90 | N | p10 | p50 | p90 | N | p10 | p50 | p90 | N | p10 | P50 | p90 | N |
| 1985 | 1.06 | 1.10 | 1.22 | 4141 | 1.09 | 1.10 | 1.26 | 1181 | | | | | | | | |
| 1986 | 1.04 | 1.07 | 1.26 | 3962 | 1.10 | 1.10 | 1.29 | 1128 | | | | | | | | |
| 1987 | 1.03 | 1.03 | 1.13 | 3910 | 1.03 | 1.03 | 1.14 | 1116 | | | | | | | | |
| 1988 | 1.02 | 1.04 | 1.20 | 3743 | 1.03 | 1.04 | 1.22 | 1071 | | | | | | | | |
| 1989 | 1.03 | 1.04 | 1.16 | 3647 | 1.03 | 1.04 | 1.14 | 1043 | | | | | | | | |
| 1990 | 1.02 | 1.02 | 1.11 | 3612 | 1.04 | 1.04 | 1.12 | 1028 | | | | | | | | |
| 1991 | 1.02 | 1.02 | 1.09 | 3613 | 1.03 | 1.03 | 1.16 | 1056 | 1.03 | 1.06 | 1.18 | 2030 | | | | |
| 1992 | 1.01 | 1.02 | 1.11 | 3585 | 1.01 | 1.03 | 1.16 | 1060 | 1.06 | 1.06 | 1.22 | 2020 | | | | |
| 1993 | 1.01 | 1.01 | 1.16 | 3603 | 1.02 | 1.03 | 1.22 | 1064 | 1.03 | 1.04 | 1.17 | 1970 | | | | |
| 1994 | 1.02 | 1.02 | 1.15 | 3577 | 1.03 | 1.05 | 1.22 | 1023 | 1.02 | 1.04 | 1.12 | 1959 | | | | |
| 1995 | 1.01 | 1.01 | 1.16 | 3526 | 1.02 | 1.05 | 1.29 | 982 | 1.03 | 1.03 | 1.11 | 1938 | | | | |
| 1996 | 1.01 | 1.03 | 1.12 | 3485 | 1.04 | 1.04 | 1.21 | 960 | 1.01 | 1.02 | 1.15 | 1951 | 1.00 | 1.08 | 1.16 | 396 |
| 1997 | 1.01 | 1.02 | 1.13 | 3458 | 1.02 | 1.04 | 1.29 | 931 | 1.02 | 1.04 | 1.12 | 1942 | 1.05 | 1.09 | 1.09 | 340 |
| 1998 | 1.02 | 1.03 | 1.14 | 3387 | 1.04 | 1.07 | 1.23 | 898 | 1.02 | 1.02 | 1.20 | 1886 | 1.08 | 1.08 | 1.35 | 308 |
| 1999 | 1.02 | 1.02 | 1.20 | 3325 | 1.04 | 1.04 | 1.22 | 858 | 1.01 | 1.03 | 1.10 | 1894 | 1.05 | 1.05 | 1.27 | 300 |
| 2000 | 1.02 | 1.02 | 1.15 | 3240 | 1.03 | 1.03 | 1.18 | 820 | 1.01 | 1.03 | 1.13 | 1879 | 1.02 | 1.02 | 1.10 | 302 |
| 2001 | 1.02 | 1.02 | 1.18 | 3168 | 1.02 | 1.02 | 1.23 | 809 | 1.02 | 1.02 | 1.16 | 1850 | 1.03 | 1.03 | 1.18 | 286 |
| 2002 | 1.01 | 1.02 | 1.21 | 3123 | 1.04 | 1.04 | 1.37 | 766 | 1.01 | 1.02 | 1.21 | 1818 | 1.00 | 1.02 | 1.21 | 289 |
| 2003 | 1.01 | 1.03 | 1.14 | 3072 | 1.01 | 1.03 | 1.31 | 742 | 1.01 | 1.03 | 1.14 | 1807 | 1.01 | 1.01 | 1.09 | 290 |
| 2004 | 1.01 | 1.01 | 1.12 | 3010 | 1.04 | 1.04 | 1.13 | 714 | 1.00 | 1.01 | 1.12 | 1813 | 1.00 | 1.01 | 1.25 | 277 |
| 2005 | 1.02 | 1.02 | 1.16 | 2937 | 1.05 | 1.05 | 1.17 | 698 | 1.00 | 1.02 | 1.15 | 1771 | 1.00 | 1.02 | 1.34 | 273 |
| 2006 | 1.01 | 1.04 | 1.22 | 2821 | 1.01 | 1.05 | 1.33 | 655 | 1.01 | 1.04 | 1.24 | 1717 | 1.03 | 1.04 | 1.44 | 261 |
| 2007 | 1.01 | 1.03 | 1.14 | 2723 | 1.03 | 1.07 | 1.24 | 614 | 1.00 | 1.03 | 1.16 | 1654 | 1.01 | 1.04 | 1.12 | 248 |
| 2008 | 1.02 | 1.05 | 1.13 | 2584 | 1.01 | 1.07 | 1.25 | 570 | 1.01 | 1.03 | 1.18 | 1592 | 1.02 | 1.07 | 1.22 | 231 |
| 2009 | 1.02 | 1.05 | 1.25 | 2423 | 1.01 | 1.05 | 1.60 | 500 | 1.00 | 1.03 | 1.21 | 1535 | 1.00 | 1.02 | 1.16 | 217 |
| 2010 | 1.01 | 1.06 | 1.38 | 2245 | 1.01 | 1.10 | 1.47 | 441 | 1.01 | 1.04 | 1.32 | 1437 | 1.00 | 1.01 | 1.43 | 278 |
| 2011 | 1.00 | 1.04 | 1.27 | 2148 | 1.01 | 1.07 | 1.55 | 391 | 1.01 | 1.05 | 1.24 | 1355 | 1.01 | 1.02 | 1.28 | 266 |
| 2012 | 1.02 | 1.08 | 1.27 | 2033 | 1.01 | 1.13 | 1.65 | 346 | 1.00 | 1.05 | 1.29 | 1312 | 1.00 | 1.04 | 1.45 | 251 |
| 2013 | 1.01 | 1.06 | 1.25 | 1949 | 1.01 | 1.09 | 1.58 | 321 | 1.01 | 1.07 | 1.27 | 1250 | 1.01 | 1.06 | 1.39 | 232 |

Data Documentation 75

References

Table 10: Summary Statistics of the Derived Longitudinal Weights at the Household Level for Subsamples E through G (Percentiles of \$HBLEIB up to Wave 30).

| | sample E | | | | sample F | | | | sample G | | | |
|-------------|----------|------|------|-----|----------|------|------|------|----------|------|------|-----|
| | p10 | p50 | p90 | N | p10 | p50 | p90 | N | p10 | p50 | p90 | N |
| 1999 | 1.00 | 1.23 | 1.47 | 886 | | | | | | | | |
| 2000 | 1.03 | 1.07 | 1.21 | 838 | | | | | | | | |
| 2001 | 1.01 | 1.05 | 1.25 | 811 | 1.08 | 1.14 | 1.59 | 4911 | | | | |
| 2002 | 1.01 | 1.02 | 1.20 | 773 | 1.03 | 1.05 | 1.46 | 4586 | | | | |
| 2003 | 1.04 | 1.04 | 1.15 | 744 | 1.02 | 1.04 | 1.24 | 4386 | 1.06 | 1.10 | 1.17 | 911 |
| 2004 | 1.00 | 1.01 | 1.08 | 732 | 1.02 | 1.03 | 1.19 | 4235 | 1.02 | 1.03 | 1.25 | 904 |
| 2005 | 1.01 | 1.03 | 1.18 | 706 | 1.01 | 1.03 | 1.17 | 4070 | 1.03 | 1.06 | 1.25 | 879 |
| 2006 | 1.00 | 1.03 | 1.21 | 686 | 1.01 | 1.03 | 1.29 | 3895 | 1.00 | 1.04 | 1.31 | 859 |
| 2007 | 1.01 | 1.01 | 1.16 | 647 | 1.02 | 1.03 | 1.15 | 3694 | 1.02 | 1.05 | 1.17 | 824 |
| 2008 | 1.00 | 1.01 | 1.19 | 602 | 1.01 | 1.03 | 1.14 | 3513 | 1.01 | 1.03 | 1.18 | 787 |
| 2009 | 1.00 | 1.04 | 1.17 | 574 | 1.02 | 1.04 | 1.34 | 3303 | 1.02 | 1.04 | 1.36 | 757 |
| 2010 | 1.01 | 1.04 | 1.25 | 553 | 1.01 | 1.05 | 1.40 | 3055 | 1.00 | 1.01 | 1.23 | 743 |
| 2011 | 1.00 | 1.00 | 1.17 | 545 | 1.01 | 1.05 | 1.34 | 2885 | 1.00 | 1.03 | 1.35 | 706 |
| 2012 | 1.05 | 1.24 | 1.66 | 92 | 1.02 | 1.08 | 1.30 | 2702 | 1.02 | 1.07 | 1.24 | 687 |
| 2013 | 1.07 | 1.20 | 1.32 | 82 | 1.01 | 1.06 | 1.21 | 2567 | 1.02 | 1.05 | 1.15 | 677 |

Table 11: Summary Statistics of the Derived Longitudinal Weights at the Household Level for Subsamples H, J and K (Percentiles of \$HBLEIB up to Wave 30).

| | sample H | | | | sample J | | | | sample K | | | |
|-------------|----------|------|------|------|----------|------|------|------|----------|------|------|------|
| | p10 | p50 | p90 | N | p10 | p50 | p90 | N | p10 | p50 | p90 | N |
| 2007 | 1.04 | 1.16 | 1.46 | 1188 | | | | | | | | |
| 2008 | 1.01 | 1.03 | 1.18 | 1082 | | | | | | | | |
| 2009 | 1.01 | 1.03 | 1.22 | 996 | | | | | | | | |
| 2010 | 1.01 | 1.04 | 1.37 | 913 | | | | | | | | |
| 2011 | 1.00 | 1.05 | 1.31 | 858 | | | | | | | | |
| 2012 | 1.00 | 1.03 | 1.36 | 818 | 1.05 | 1.19 | 1.52 | 2555 | | | | |
| 2013 | 1.00 | 1.05 | 1.27 | 783 | 1.03 | 1.13 | 1.36 | 2305 | 1.04 | 1.15 | 1.47 | 1281 |

Data Documentation 75

References

Table 12: Summary Statistics of the Derived Cross-Sectional Weights at the Household Level (Percentiles of \$HHRF up to Wave 30).

| | p5 | p10 | p25 | p50 | p75 | p90 | p95 | N |
|-------------|-----------|------------|------------|------------|------------|------------|------------|----------|
| 1984 | 431 | 597 | 3805 | 4725 | 5647 | 7130 | 8248 | 5921 |
| 1985 | 482 | 683 | 3897 | 5081 | 6430 | 8473 | 10032 | 5322 |
| 1986 | 541 | 752 | 3610 | 5302 | 6839 | 9277 | 11114 | 5090 |
| 1987 | 548 | 791 | 3541 | 5379 | 7040 | 9572 | 11449 | 5026 |
| 1988 | 534 | 804 | 3565 | 5637 | 7538 | 10348 | 12523 | 4814 |
| 1989 | 548 | 821 | 3613 | 5845 | 7876 | 10803 | 13276 | 4690 |
| 1990 | 698 | 1073 | 2217 | 4602 | 7042 | 9878 | 12394 | 6819 |
| 1991 | 680 | 1044 | 2332 | 4696 | 7156 | 10281 | 12875 | 6699 |
| 1992 | 671 | 1026 | 2340 | 4661 | 7139 | 10524 | 13660 | 6665 |
| 1993 | 690 | 1056 | 2403 | 4670 | 7253 | 10757 | 13975 | 6637 |
| 1994 | 713 | 1098 | 2402 | 4677 | 7271 | 11195 | 14664 | 6559 |
| 1995 | 700 | 1113 | 2381 | 4366 | 6974 | 11080 | 14823 | 6768 |
| 1996 | 738 | 1162 | 2386 | 4364 | 7010 | 11379 | 15311 | 6699 |
| 1997 | 746 | 1207 | 2399 | 4313 | 7052 | 11846 | 15895 | 6621 |
| 1998 | 983 | 1353 | 2331 | 3981 | 6215 | 9885 | 13119 | 7492 |
| 1999 | 970 | 1326 | 2312 | 3982 | 6497 | 10888 | 14352 | 7220 |
| 2000 | 803 | 1103 | 1760 | 2525 | 3568 | 5090 | 6491 | 13082 |
| 2001 | 752 | 1029 | 1756 | 2750 | 4143 | 6088 | 7843 | 11796 |
| 2002 | 506 | 659 | 1221 | 2554 | 4189 | 6523 | 8241 | 12320 |
| 2003 | 504 | 676 | 1231 | 2564 | 4329 | 6826 | 9079 | 11909 |
| 2004 | 491 | 669 | 1214 | 2536 | 4420 | 7261 | 9833 | 11644 |
| 2005 | 490 | 678 | 1235 | 2544 | 4520 | 7581 | 10860 | 11294 |
| 2006 | 451 | 648 | 1265 | 2382 | 4131 | 7137 | 9726 | 12361 |
| 2007 | 450 | 651 | 1256 | 2454 | 4458 | 7638 | 10566 | 11552 |
| 2008 | 450 | 654 | 1276 | 2541 | 4736 | 8224 | 11514 | 10921 |
| 2009 | 465 | 670 | 1309 | 2629 | 5005 | 9079 | 12312 | 10270 |
| 2010 | 497 | 708 | 1397 | 2803 | 5457 | 10120 | 13194 | 9551 |
| 2011 | 423 | 635 | 1357 | 2478 | 4351 | 7387 | 9549 | 12183 |
| 2012 | 395 | 610 | 1372 | 2573 | 4406 | 7064 | 9680 | 12217 |
| 2013 | 281 | 419 | 884 | 2062 | 3926 | 6430 | 8484 | 13990 |

Data Documentation 75

References

Table 13: Summary Statistics of the Derived Cross-Sectional Weights at the Person Level (Percentiles of \$PHRF up to Wave 30).

| | p5 | p10 | p25 | p50 | p75 | p90 | p95 | N |
|-------------|-----------|------------|------------|------------|------------|------------|------------|----------|
| 1984 | 385 | 538 | 1159 | 4371 | 5224 | 6066 | 6881 | 16173 |
| 1985 | 459 | 633 | 1431 | 4620 | 5716 | 6848 | 8113 | 14508 |
| 1986 | 492 | 677 | 1532 | 4681 | 6031 | 7572 | 8957 | 13804 |
| 1987 | 513 | 717 | 1599 | 4713 | 6228 | 7907 | 9368 | 13563 |
| 1988 | 488 | 683 | 1610 | 4876 | 6543 | 8505 | 10158 | 12872 |
| 1989 | 528 | 758 | 1755 | 5006 | 6878 | 8959 | 10666 | 12443 |
| 1990 | 688 | 1023 | 1907 | 3451 | 6153 | 8281 | 10217 | 18254 |
| 1991 | 737 | 1071 | 1902 | 3715 | 6206 | 8463 | 10662 | 17844 |
| 1992 | 782 | 1141 | 1985 | 3732 | 6279 | 8702 | 11158 | 17429 |
| 1993 | 848 | 1240 | 2061 | 3822 | 6382 | 8943 | 11425 | 17072 |
| 1994 | 867 | 1274 | 2090 | 3819 | 6397 | 9234 | 12082 | 16715 |
| 1995 | 764 | 1150 | 2012 | 3588 | 6081 | 9073 | 12263 | 17345 |
| 1996 | 806 | 1186 | 2017 | 3622 | 6162 | 9362 | 12908 | 16944 |
| 1997 | 848 | 1215 | 2058 | 3650 | 6241 | 9680 | 13467 | 16583 |
| 1998 | 916 | 1264 | 2039 | 3499 | 5581 | 8484 | 11440 | 18249 |
| 1999 | 901 | 1239 | 2014 | 3477 | 5779 | 9228 | 12615 | 17501 |
| 2000 | 719 | 970 | 1552 | 2308 | 3223 | 4550 | 5831 | 30784 |
| 2001 | 690 | 932 | 1528 | 2448 | 3656 | 5426 | 6920 | 27956 |
| 2002 | 430 | 595 | 1050 | 2190 | 3712 | 5829 | 7618 | 29101 |
| 2003 | 430 | 610 | 1068 | 2198 | 3811 | 6147 | 8266 | 27867 |
| 2004 | 429 | 603 | 1069 | 2185 | 3912 | 6540 | 8822 | 26918 |
| 2005 | 433 | 619 | 1103 | 2242 | 4012 | 6883 | 9670 | 25638 |
| 2006 | 399 | 581 | 1101 | 2187 | 3667 | 6346 | 8905 | 27442 |
| 2007 | 401 | 588 | 1113 | 2238 | 3897 | 7121 | 10172 | 25505 |
| 2008 | 414 | 601 | 1137 | 2321 | 4126 | 7676 | 11129 | 23792 |
| 2009 | 428 | 617 | 1177 | 2402 | 4371 | 8394 | 12431 | 22096 |
| 2010 | 460 | 662 | 1265 | 2576 | 4783 | 9336 | 13638 | 20281 |
| 2011 | 396 | 587 | 1238 | 2327 | 4018 | 6950 | 9467 | 25337 |
| 2012 | 388 | 583 | 1276 | 2449 | 4142 | 6797 | 9377 | 24987 |
| 2013 | 277 | 403 | 792 | 1857 | 3512 | 5877 | 7789 | 30174 |

6 References

- Arbeitsgemeinschaft ADM-Stichproben und Bureau Wendt. 1994. Das ADM-Stichproben - System (Stand 1993). In: S. Gabler, S., J. Hoffmeyer-Zlotnik, J. and D. Krebs, D. (eds): *Gewichtung in der Umfragepraxis*. Westdeutscher Verlag, Opladen: 188-203.
- SOEP Group. 2001. The Socio-Economic Panel (SOEP) after more than 15 Years. *Vierteljahrshefte zur Wirtschaftsforschung* 1.
- Haisken-DeNew, John and Joachim Frick (eds.) 2001: *Desktop Companion to the Socio Economic Panel (SOEP)*. Berlin, DIW.
- Rendtel, Ulrich. 1991. Die Schätzung von Populationswerten in Panelerhebungen. *Allgemeines Statistisches Archiv* 75: 225-244.
- Rendtel, Ulrich. 1995. *Panelausfälle und Panelrepräsentativität*. Frankfurt, Campus Verlag.
- Rendtel, Ulrich, Markus Pannenberg and Stefan Daschke. 1997. Die Gewichtung der Zuwanderer-Stichprobe des Sozio-ökonomischen Panels (SOEP). *Vierteljahrshefte zur Wirtschaftsforschung* 2: 271-286.
- Schonlau, Matthias, Watson, Nicole, and Martin Kroh. 2011. Household Survey Panels: How Much do Following Rules Affect Sample Size? *Survey Research Methods* 5: 53-61.
- Schonlau, Matthias, Kroh, Martin and Nicole Watson. 2013. The Implementation of Cross-Sectional Weights in Household Panel Surveys. *Statistics Surveys*.
- Spiess, Martin and Ulrich Rendtel. 2000. Combining an Ongoing Panel with a New Cross-Sectional Sample. *DIW Discussion Paper* 198.
- Spiess, Martin, Kroh, Martin, Pischner, Rainer, and Gert G. Wagner. 2008. On the Treatment of Non-Original Sample Members in the German Household Panel Study (SOEP) - Tracing, Weighting, and Frequencies. *SOEP Paper* 98.